

# G610 GSM/GPRS Module

Perfect Wireless Connection



Quad-band



GPRS Class 10



Internal  
TCP/IP



Extended  
Temperature Range



Ext. RF



Approved



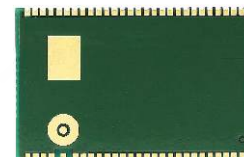
RoHS

FIBOCOM G610 modules are designed based on the application traits of portable products. They have low power consumption, are small in size, and they adopt LCC package. Connectors are omitted for the convenience of bulk processing, thus helping customers reduce the total cost of terminals systematically.

The G610 module supports GSM/GPRS 850/ 900/1800/1900 MHz. It has a built-in TCP/IP protocol stack and a reliable GPRS data connection. The AT command set and G600 are both fully compatible. Numerous extended interfaces such as I2C and definable GPIO can be easily integrated with peripheral equipment and the design of products is simpler and more flexible.

The G610 module meets industrial-grade demands and its production and manufacturing fully conform to ISO/TS 16949 certification. It can adapt to severe working environments with high temperatures, high humidity, and electromagnetic interference.

The combination of extremely compact design and broader temperature range has made the G610 the ideal choice for portable products in the field of M2M technology applications, such as personal location and tracking, vehicle team management, handheld devices, environment monitoring, and remote medical services.



## Features

- Quad-band: 850/900/1800/1900MHz
- Ultra Low Consumption: 1.6mA@sleep mode
- Built-in TCP/IP protocol stack
- LCC package, 55pin
- Operating Voltage: 3.3~4.5V
- Sensibility: -108dBm (850/900MHz)
- Size: 31.3 x 20.2 x 3.0mm
- Weight: 3.5 gram
- Operating Temperature: -40~+85°C
- Storage Temperature: -40~+85°C

# G610 GSM/GPRS Module

Perfect Wireless Connection

## G610 GSM/GPRS Module Technical Specifications

### Product Features

#### Supported Bands

- Quad Band
  - 900/1800MHz
  - 850/1900MHz

#### Physical

- Size: 31.3 x 20.2 x 3.0mm
- Weight: 3.5gram

#### Environmental

- Operating temperature: -40~ +85°C

### Performances

#### Operating Voltage

- Voltage: 3.5~4.5V

#### Current Consumption

- 1.6mA@sleep mode(DRX9)

#### TX Power

- 800/900MHz class 4(2W)
- 1800/1900MHz class1(1W)

#### RX Sensitivity

- -108dBm(850/900MHz)

### Interfaces

#### Interfaces

- LCC 55pin

#### Sim Card

- 1.8V/3.0V
- STK

#### Connectivity

- UART: BR from 1200 to 230400
- Auto BR supported

### Data

#### General

- Internal TCP/UDP

#### GPRS

- Multi-slot class 10 (4 Down;2 Up; 5 Total)
- Max BR Downlink 85.6 Kbps
- Coding Scheme CS1-CS4

#### MUX

- Basic Mode

#### CSD

- Max BR 9.6kbps

#### SMS

- MO/MT Text and PDU modes
- Cell broadcast

### Voice Features

- Two channels balanced analog audio
- Vocoders EFR/HR/FR/AMR
- DTMF TX
- Audio Control
  - Echo suppression
  - Noise suppression
  - Side tone
  - Gain control

### Control/Status Indications

- Power on/off
- Reset
- ADC
- I2C
- GPIO

### GSM Supplementary Service

- Call forwarding
- Call hold;waiting;multparty
- Call diverting
- Call barring

### Character Set

- IRA
- UCS2
- GSM
- HEX

### AT Command Set

- GSM 07.05
- GSM 07.07
- GSM 07.10
- Embedded TCP/IP Stack

### Accessories

- Hardware User Manual
- AT Command User Manual
- Evaluation Kit
- Evaluation Kit User Manual
- Evaluation Kit Schematics
- Release Notes
- Flash Tool (for XP)
- MobileAnalyser (for XP)
- Fibo\_Center (for Windows XP)

### Regulatory and Approvals

- SRRC/CCC/NAL
- CE/FCC/Anatel



Copyright © 1999~2013 Fibocom Wireless Inc.

Subject to changes in technology, design and availability

E-mail : market@fibocom.com Tel : +86 755-8636 8315