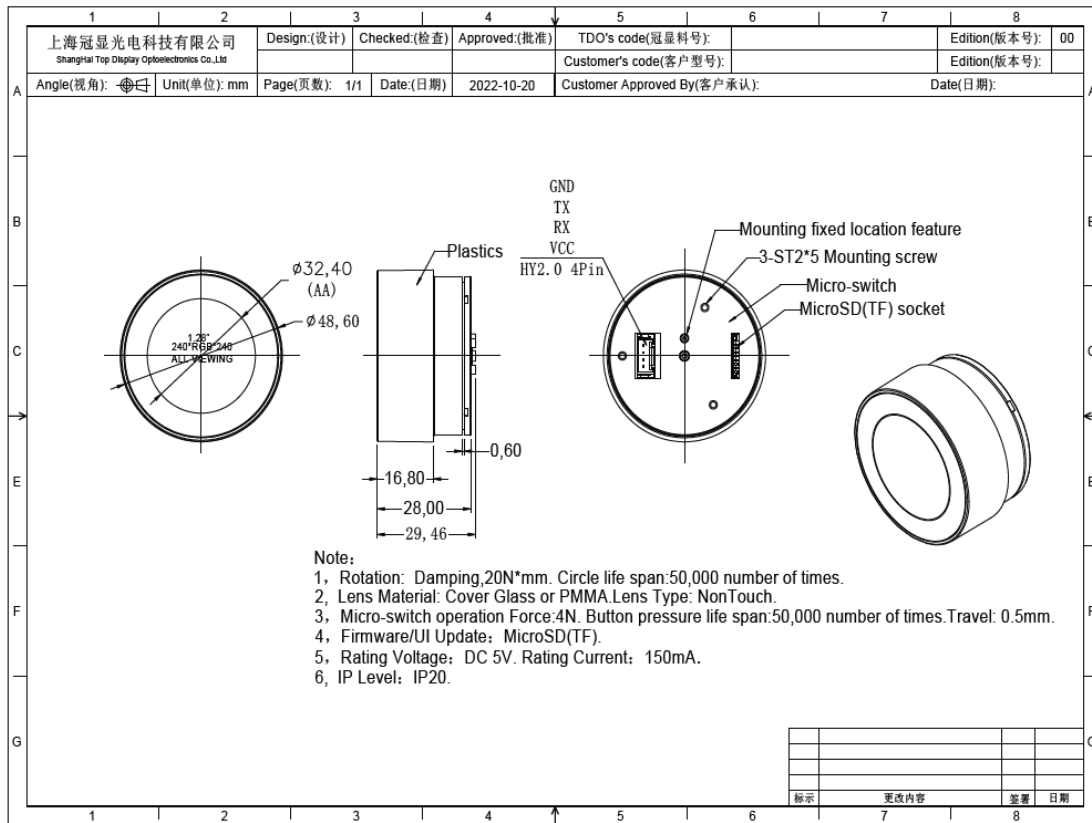


3. Product Size



● LCD screen	
Display type	TFT LCD
Back light	LED
Brightness(nit)	300
Backlight life(hour)	20000
Contrast	800
Perspective(T/B/L/R)	80/80/80/80
● Environmental electrical parameters	

Voltage	5V DC
Power consumption	5V/150mA(Max brightness)
Working temperature	-20°C~70°C
Storage temperature	-30°C~80°C
Working humidity	10%~90%RH
Storage humidity	10%~90%RH
● Communication interface parameters	
Communication mode	3.3V TTL(5V TTL optional)
Baud	1200~115200,typical value is 115200
Data frame format	8N1
Communication plug-in specification	4Pin HY2.0 stand plug-in
● Other hardware specifications	
Micro SD socket	Support
● Product certification	
Environmental protection grade	RoSH