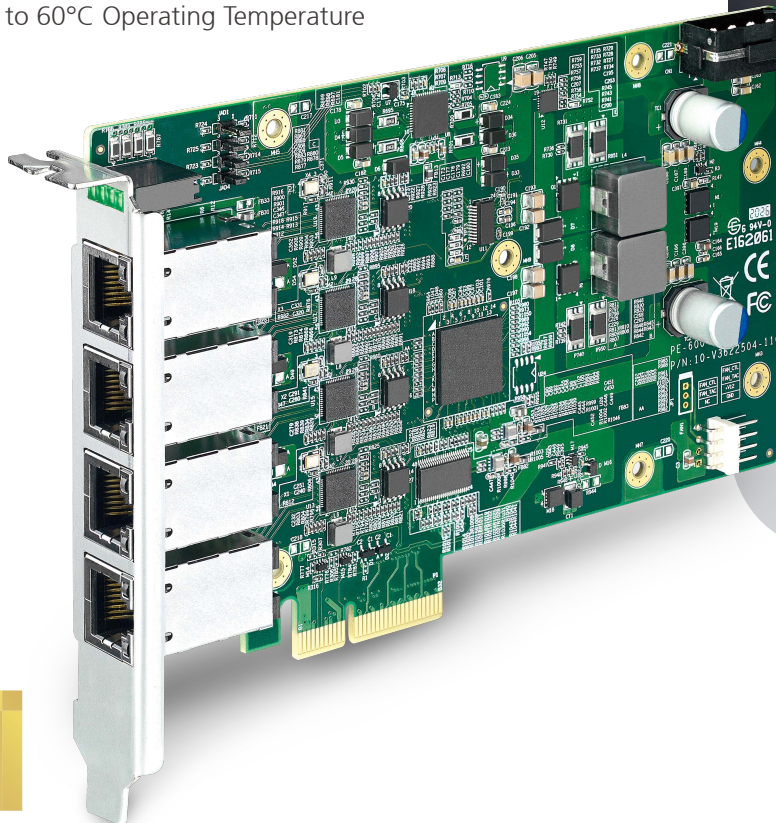


PE-6004

2.5GigE

Intel® I225 4-port 2.5GigE PoE+ PCI Express Expansion Card

- Intel® I225 2.5GBASE-T Ethernet Controller supports 4-port independent 2.5GigE LAN, up to 2.5Gbps data rate
- PCI Express x4 interface
- Supports IEEE 802.3at Power over Ethernet (PoE+), up to 25.5W Power Output at 48V DC per port, with PoE+ On/Off Control
- IEEE 802.3bz (2500BASE-T), IEEE 802.3ab (1000BASE-T), IEEE 802.3u (100BASE-TX), and IEEE 802.3i (10BASE-TX) compliant
- Teaming features : Fault Tolerance, IEEE 802.3ad Link Aggregation and Load Balancing, up to 9KB Jumbo Frame
- Time Sensitive Network (TSN) features : IEEE 1588 Precision Time Protocol (PTP), IEEE 802.3AS Precision Timing Synchronization, IEEE 802.1Qav and 802.1Qbv
- Supports IEEE 802.3az Energy Efficient Ethernet (EEE) and DMA Coalescing Power Management features
- Integrated Switching Voltage Regulator (iSVR) and IEEE 802.1q VLAN supported
- -25°C to 60°C Operating Temperature



intel
partner
Gold

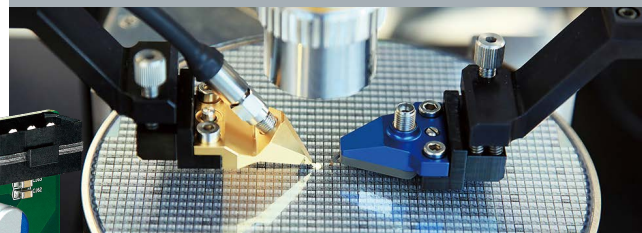
Medical Vision



Video Streaming



Real-time Inspection

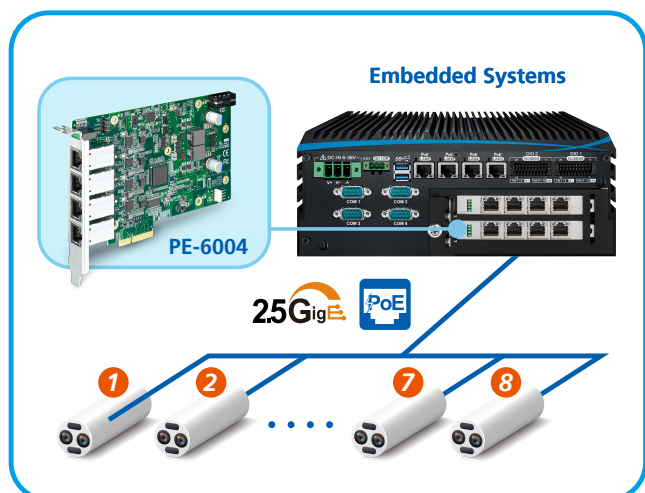


Scientific Research



www.vecow.com

Applications



Specifications

Ethernet

Interface	PCI Express x4
Controller	Intel® Ethernet Controller I225-LM
Controller Qty	4
Data Rate	2.5Gbps/1Gbps/100Mbps/10Mbps
Number of Port	4
Jumbo Frame	Up to 9KB supported
Link Aggregation (LAG)	Present
PoE Standard	IEEE 802.3at compliant

Power Requirement

Output	- 4 RJ45 Connector - 4 LED for PoE On/Off Mode - Up to 25.5W Power Output at 48V DC per port
Power Connector	1 4-pin 12V Power Connector

Mechanical

Dimension (W x L)	167.7mm x 111.1mm (6.60" x 4.38")
Bracket	Full height

Software Support

OS	Windows 10, Linux
----	-------------------

* All product information may subject to change without prior notice.
* The rights of all brand names, product names and trademarks belong to their respective owners.
Copyright © 2022 Vecow Co., Ltd. All rights reserved.

Vecow info@vecow.com

Environment

Operating Temperature	-25°C to 60°C with air flow (-40°F to 140°F)
Storage Temperature	-40°C to 85°C (-40°F to 185°F)
Humidity	5% to 95% Humidity, non-condensing
Relative Humidity	95% @ 60°C
EMC	CE, FCC

Order Information

Model	Description
PE-6004	Intel® I225 4-CH PCI Express Card with 2.5GigE PoE*

Dimensions & Drawing

Unit : mm (inch)

