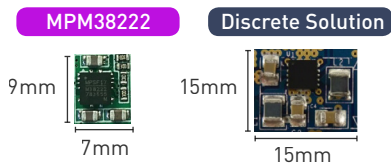


# Power Module Family

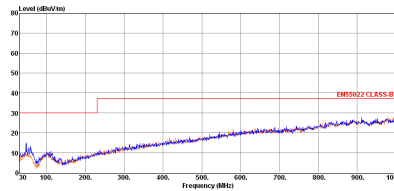
MPS' power modules have a wide range of  $V_{IN}$  and  $I_{OUT}$  with a variety of packages. Our extensive portfolio of DC/DC modules integrate inductors, FETs, compensation and other passive components into a single package to simplify the design process. Choose what module works best for your design based on our beneficial features. Visit [MonolithicPower.com](http://MonolithicPower.com) for more information.

## Small Size & Ease of Use



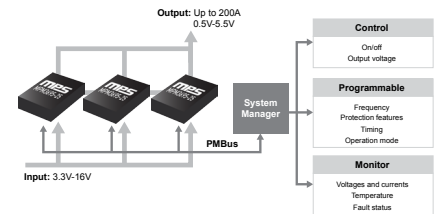
Minimal external components  
Easy layout  
Fast design cycle

## Low EMI



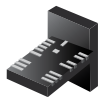
Meet EN55022  
Class B EMI standard

## Scalability & Programmability



I2C & MTP  
Graphic user interface available

### MPM3515



QFN 3x5x1.6mm

- 4V to 36V  $V_{IN}$
- 0.8V to 30.6V  $V_{OUT}$
- Continuous 1.5A Output
- Ext clock synchronization

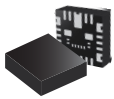
### MPM3570E NEW



LGA 10x10x4.2mm

- 4.5V to 75V  $V_{IN}$
- 1V to 12V  $V_{OUT}$
- Max 0.3A
- Enhanced light-load efficiency
- Ultra-low EMI noise

### MPM3683-7 NEW



QFN 7x7x4mm

- 2.7V to 16V  $V_{IN}$
- 0.6V to 5.5V  $V_{OUT}$
- Max 8A continuous output
- Fast transient response
- Non-latch OCP, OVP, UVP

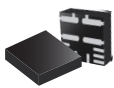
### MPM3695-25 NEW



LGA 10x12x4mm

- 3V to 16V  $V_{IN}$
- 0.5V to 5.5V  $V_{OUT}$
- Max 25A, parallel up to 200A
- I2C interface & MTP
- GUI available

### MPM38222



QFN 4x4x1.6mm

- 2.7V to 6V  $V_{IN}$
- Dual output, max 2A
- Enhanced light-load efficiency
- Individual EN pins
- Pin-to-pin with dual 1A MPM38111

### MPM3811 NEW



QFN 2x2x1.6mm

- 2.3V to 5.5V  $V_{IN}$
- 0.6V to  $D_{max} * 5.5V$
- Max 1A
- Smallest 1A module
- EN, PG pins

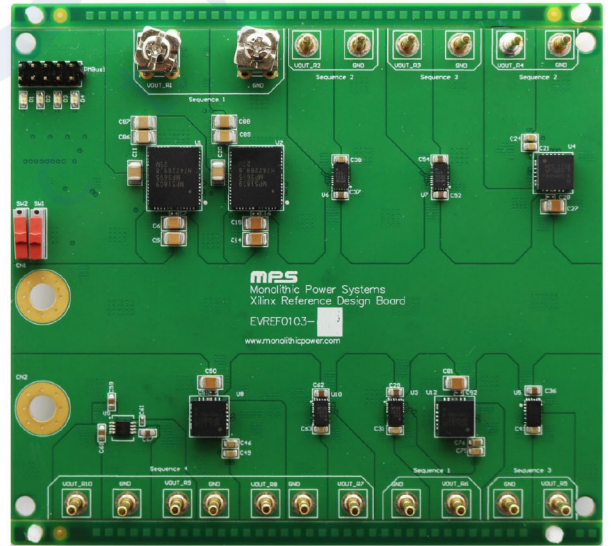
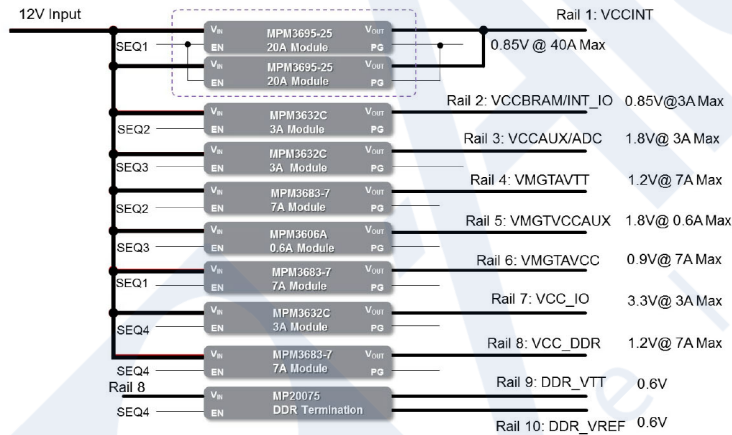
# MPS

# Power Module Family

Max $V_{IN}$	$I_{OUT}$	0.6A	1.2A	2A	3A	4-5A	6-8A	10A	15A	20A	60A/100A		
Wide $V_{IN}$ 75V		<b>NEW</b> MPM3570E 10x10x4mm			<b>NEW</b> MPM3530 10x12x4mm								
	High Voltage ( $\leq 45V$ )	MPM3506A 3x5x1.6mm	MPM3510A MPM3515 3x5x1.6mm	<b>NEW</b> MPM3520E 10x10x4mm	<b>SAMPLING</b> mEZD94003A 11x15x4mm <b>SAMPLING</b> mEZD74003L 6x8x1.6mm	<b>NEW</b> MPM3550E 10x10x4mm							
Medium Voltage ( $< 24V$ )		MPM3606 MPM3606A 3x5x1.6mm	MPM3606 MPM3610A 3x5x1.6mm	MPM3620 MPM3620A 3x5x1.6mm	<b>NEW</b> MPM3632C 3x5x1.6mm <b>SAMPLING</b> MPM3632S 3x3x1.5mm	<b>SAMPLING</b> MPM3650 4x6x1.6mm	<b>NEW</b> MPM3683-7 7x7x4mm	<b>SAMPLING</b> MPM3695-10 8x8x1.6mm	MPM3680 12x12x4mm	MPM3682 12x12x4mm	MPM3684 12x15x4mm	MPM3686 12x15x4mm	<b>NEW</b> mEZD81260A 25x15.5x7.5mm
	Low Input ( $< 6V$ )	MPM3805 3x2.5x0.9mm	MPM3810 3x2.5x0.9mm	MPM3820 3x5x1.6mm	MPM3830 3x5x1.6mm	MPM3840 3x5x1.6mm	<b>SAMPLING</b> MPM3860 4x6x1.6mm						
		MPM3804 2x2x0.9mm	<b>NEW</b> MPM3811 2x2x1.6mm	<b>NEW</b> MPM3822C 2.5x3.5x1.6mm	<b>NEW</b> MPM3833C 2.5x3.5x1.6mm								
			MPM38111 (Dual) 2x2x1.6mm	MPM38222 (Dual) 2.5x3.5x1.6mm									

## Power Module Solutions for FPGA

### EVREF0103A for Kintex/Zynq Ultrascale+



FPGA Series	FPGA Part Numbers	EVB #
VirtexUltrascale/+	VU11P, VU13P	EVREF0104-A
	VU5P, VU7P, VU9P, VU35P, VU37P	EVREF0104-B
	VU3P, VU31P, VU33P	EVREF0104-C
KintexUltrascale/+	KU13P, KU15P	EVREF0103-A
	KU3P, KU5P, KU9P, KU11P	EVREF0103-B
Zynq Ultrascale+ MPSoC	ZU9CG, ZU9EG, ZU11EG-ZU19EG	EVREF0101-A
	ZU3CG to ZU7EV	EVREF0101-B
Zynq 7000	XC7Z007S to XC7Z020, XC7Z030	EVREF0100-A
Zynq Ultrascale+ RFSoc	ZU21DR to ZU29DR	EVREF0102-A

Complete FPGA reference designs  
available at [MonolithicPower.com](http://MonolithicPower.com)

