

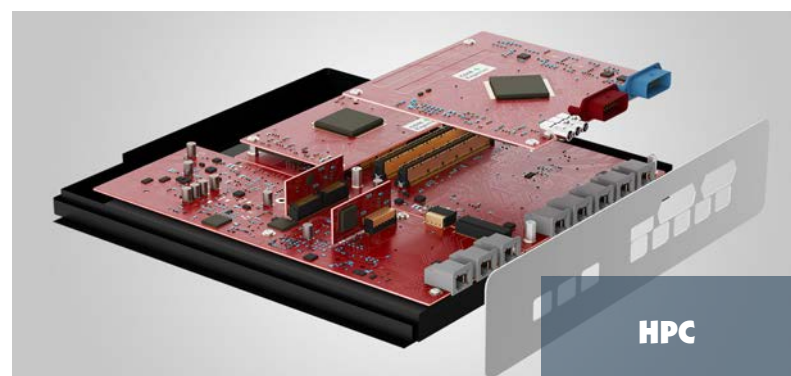
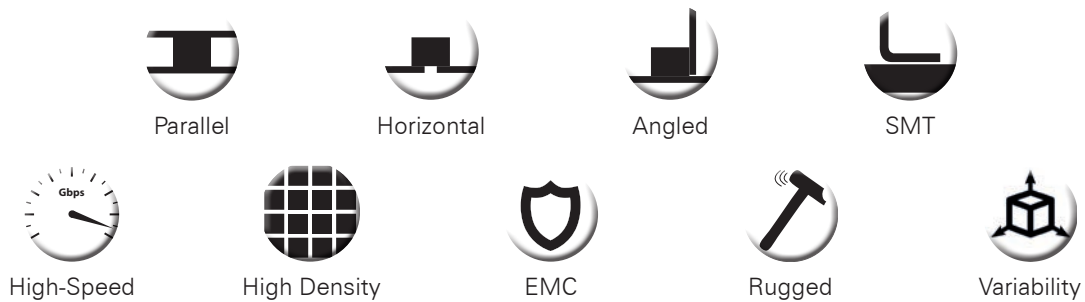
## Key Features

- up to 16 Gbps
- 12 to 80 contacts
- 1.7 A current carrying capacity
- 500 mating cycles
- Maximized contact reliability
- Optimized mating protection
- Packaged in tape & reel
- Board-to-Board from 6 to 21 mm
- Parallel and right-angled connections
- Shielded and unshielded versions

Watch the Zero8 video:

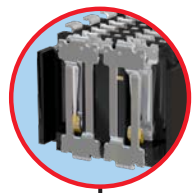


[https://www.youtube.com/watch?v=\\_qPIL78i1sk](https://www.youtube.com/watch?v=_qPIL78i1sk)

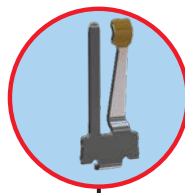


# Zero8

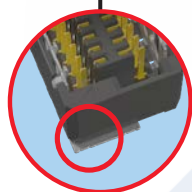
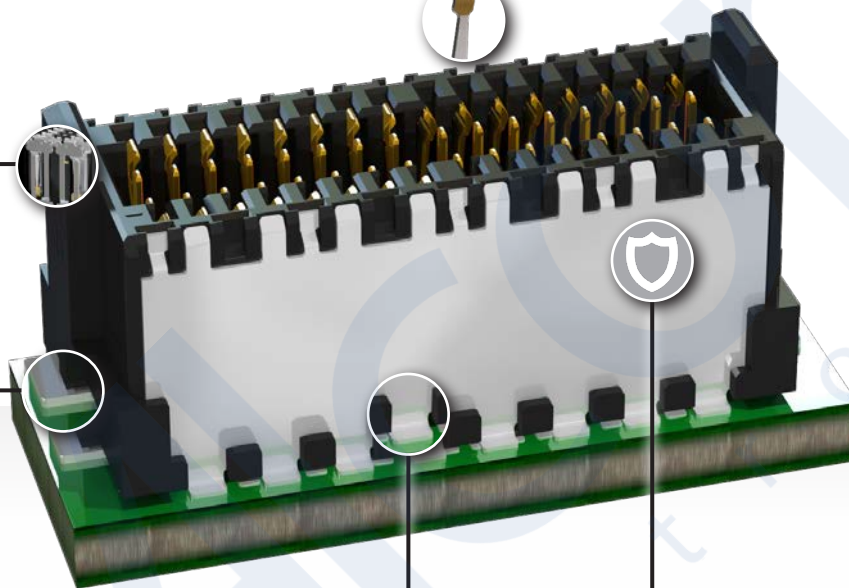
## Advantages & Features



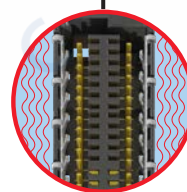
**Double-Sided Contact System**  
For reliable contacting in industrial environments



**Smooth Contact Surface**  
Contacting on the smooth rolled side enables up to 500 mating cycles



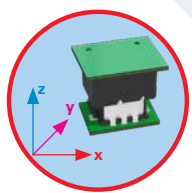
**Boardlock**  
For a robust connection to the circuit board



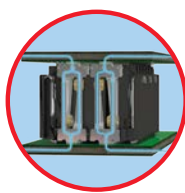
**Shielding EMC**  
Double-sided shielding for optimal signal integrity



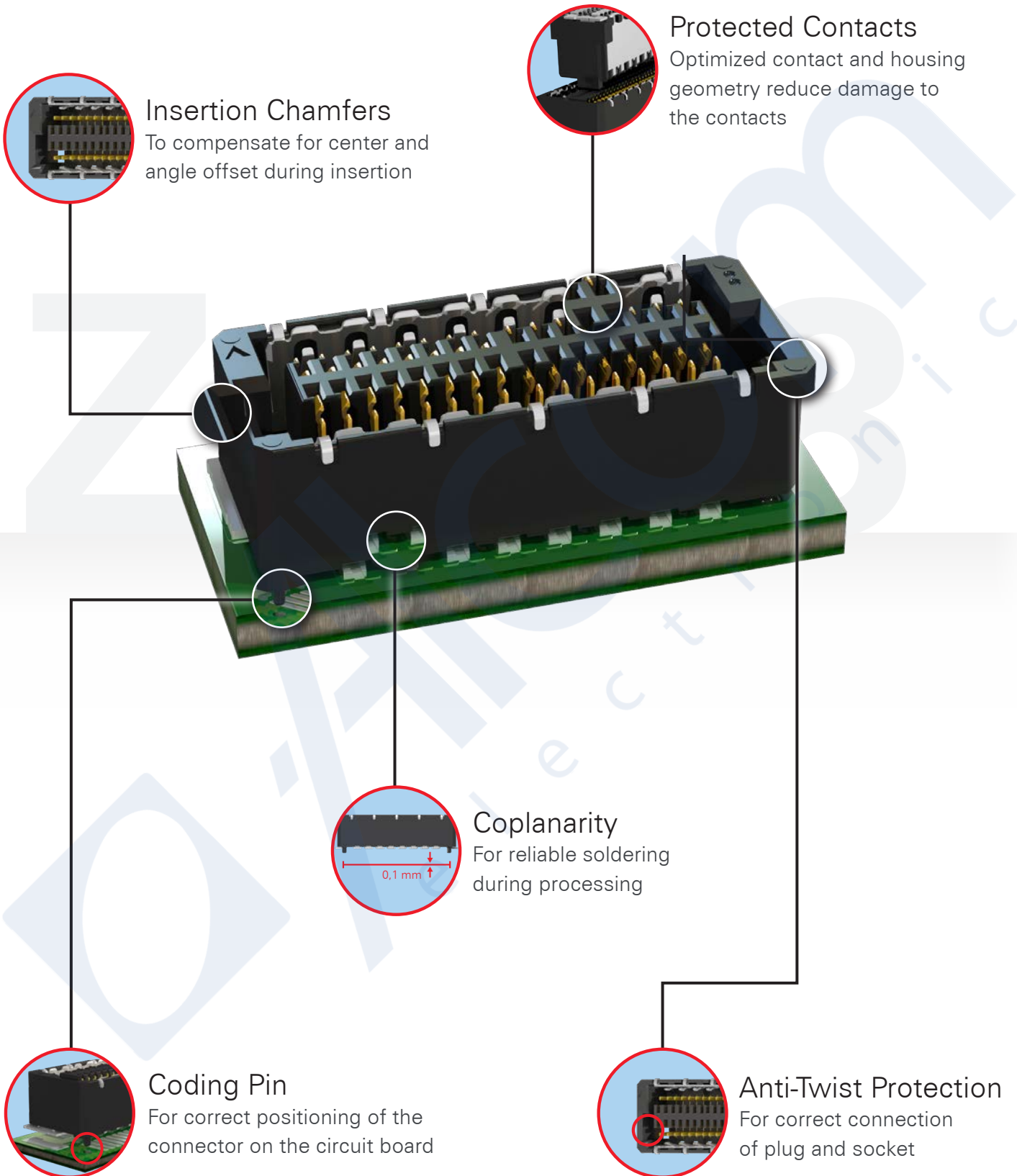
**Solder Miniscus**  
Guarantees a robust surface mount connection



**Tolerance**  
High reliability due to high tolerance compensation



**Dataflow**  
HF-optimized contact geometry ensures data speeds of up to 16 Gbps



**Insertion Chamfers**  
To compensate for center and angle offset during insertion

**Protected Contacts**  
Optimized contact and housing geometry reduce damage to the contacts

**Coplanarity**  
For reliable soldering during processing

**Coding Pin**  
For correct positioning of the connector on the circuit board

**Anti-Twist Protection**  
For correct connection of plug and socket