

## Eaton Bussmann series ExC10 fuses



# Eaton 10 x 32 mm fuses provide reliable overcurrent protection in power dense applications



Eaton's EAC10 and EDC10 offer multiple termination options to suit a wide range of application needs, including PCB through-hole and bolt-down screw assemblies.

### Product description

Eaton Bussmann series EAC10 and EDC10 are high power density cartridge fuses with nominal current ratings from 40 A to 63 A and high voltage ratings of up to 500 V. Both families provide highly reliable overcurrent protection in high-voltage, high-current applications. Eaton's EAC10 and EDC10 offer multiple termination options to suit a wide range of application needs, including cartridge, PCB mount through-hole, and bolt-down assemblies. Applications for EAC10 and EDC10 fuses include Onboard chargers (OBC), power distribution units (PDU), Uninterruptible power supplies (UPS), 3-phase EV supply equipment (EVSE) / charging infrastructure, motor protection, input protection in rectifiers, and output protection in inverters.

### Features and benefits

- Ultra-compact footprint
- Cost-effective and reliable fusible solution
- High current ratings: up to 63 A
- High voltage ratings: up to 500 V
- Multiple terminations styles with cartridge, bolt down, and PCB mount
- Suitable for on-board applications (through-hole and bolt-down)

# EATON

Powering Business Worldwide

 Alcom  
electronics

Singel 3 | B-2550 Kontich | Belgium | Tel. +32 (0)3 458 30 33 | info@alcom.be | www.alcom.be  
Rivium 1e straat 52 | 2909 LE Capelle aan den IJssel | The Netherlands | Tel. +31 (0)10 288 25 00 | info@alcom.nl | www.alcom.nl

## Electrical characteristics

### EAC10

Amp Rating	1.0 In minimum	2.0 In maximum
40 A to 63 A	4 hours	120 seconds

### EDC10

Amp Rating	1.0 In minimum	3.5 In maximum
30 A to 60 A	4 hours	10 seconds

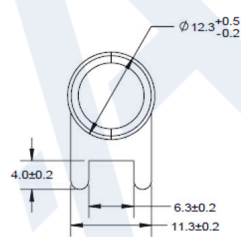
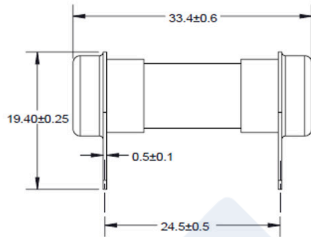
## Product specifications

Part number	Current rating (A)	Voltage rating		Interrupting rating @ rated voltage		Typical DCR (mΩ)
		(V <sub>AC</sub> )	(V <sub>DC</sub> )	(V <sub>AC</sub> )	(V <sub>DC</sub> )	
<b>EAC10</b>						
EAC10-40	40	500 250	-	2000 10,000	-	1.71
EAC10-50	50	500 250	-	2000 10,000	-	1.33
EAC10-63	63	500 250	-	2000 10,000	-	1.05
<b>EDC10</b>						
EDC10-30	30	500 420	500	3000 10,000	10,000	3.0
EDC10-40	40	500 420	500	3000 10,000	10,000	2.2
EDC10-50	50	500 420	500	3000 10,000	10,000	1.6
EDC10-60	60	500 420	500	3000 6000	10,000	1.3

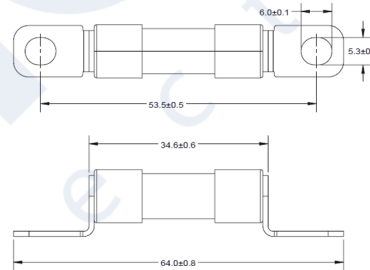
## Dimensions- mm

Drawing not to scale

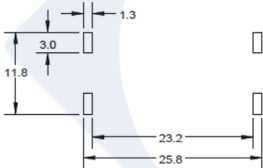
### PCB terminal version



### Bolt version



### PCB layout



**Eaton**  
**Electronics Division**  
 1000 Eaton Boulevard  
 Cleveland, OH 44122  
 United States  
 Eaton.com/electronics

© 2023 Eaton  
 All Rights Reserved  
 Printed in USA  
 Publication No. ELX1242 BU-ELX22188  
 February 2023

Eaton is a registered trademark.

All other trademarks are property of their respective owners.

Follow us on social media to get the latest product and support information.



**EATON**  
 Powering Business Worldwide

**Alcom**  
 electronics

Singel 3 | B-2550 Kontich | Belgium | Tel. +32 (0)3 458 30 33 | info@alcom.be | www.alcom.be  
 Rivium 1e straat 52 | 2909 LE Capelle aan den IJssel | The Netherlands | Tel. +31 (0)10 288 25 00 | info@alcom.nl | www.alcom.nl