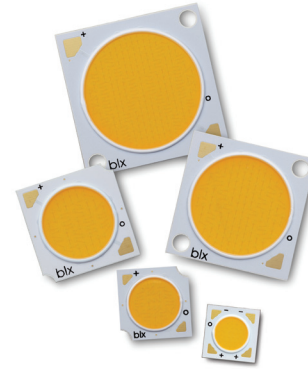


V Series™ Gen 8

Bridgelux Differentiation

- 15+ years of driving LED industry transformation
- Industry's broadest portfolio of CCT and CRI options
- IP protected LED innovation
- Vertically integrated global supply chain



Features and Benefits

- Efficacy of up to 182 lm/W to support luminaire miniaturization trends and efficiency standards
- 3x Overdrive capability with up to 30% increase in lumens per LES size for precision optical control
- Source lumens aligned with traditional lighting requirements to deliver the right light for the right application
- Typical drive currents aligned with industry standards
- Optically and mechanically compatible with previous product generations to simplify upgradability

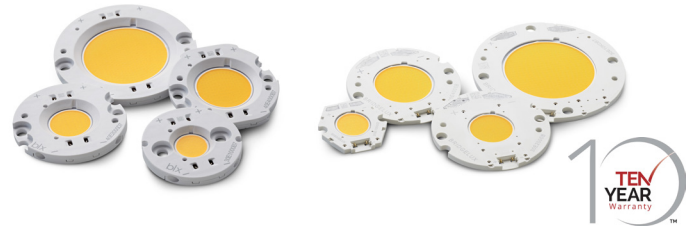
Product	CCT Range	CRI	SDCM	Typ. Flux* (lm) 3000K, 80CRI	Drive Current (mA)	Voltage* (V)	Efficacy* (lm/W) 3000K, 80CRI	LES (mm)
V8D V8E	2700K-5000K	70, 80, 90	1, 2, 3, 4	895 895	300 150	16.8 33.5	178	8
V10B V10C	2700K-6500K	70, 80, 90	1, 2, 3, 4	1215 1640	200 300	34.2 30.7	178	10
V13B V13C	2700K-6500K	70, 80, 90	1, 2, 3, 4	2090 2980	350 500	33.4 33.4	178	13
V15D	2700K-6500K	70, 80, 90	1, 2, 3, 4	3010	500	33.7	178	15
V18B V18C	2700K-6500K	70, 80, 90	1, 2, 3, 4	4280 6400	700 1050	33.9 33.9	180	18
V22B V22C V22D	2700K-6500K	70, 80, 90	1, 2, 3, 4	8682 11080 6407	950 1200 1050	50.2 50.7 33.5	182	22

* All measurements are at T_c=25°C

Vero[®] & Vero[®] SE Series Gen 8

Bridgelux Differentiation

- 15+ years of driving LED industry transformation
- Industry's broadest portfolio of CCT and CRI options
- IP protected LED innovation
- Vertically integrated global supply chain



Features

- On-board connector port or poke-in connectivity
- Efficacy of up to 185 lm/W typical
- 3x Overdrive capability
- Source lumens aligned with traditional lighting requirements
- Typical drive currents aligned with industry standards
- Optically and mechanically compatible with previous product generations

Benefits

- Solderless connectivity for plug & play installation
- 30% increase in lumens per LES size for precision optical control
- Delivers the right light for the right application
- Reduced system costs
- Simplified upgradability leveraging existing ecosystem components



Applications

- Residential
- Building Exterior
- Landscape
- Healthcare
- Roadway
- Area & Parking Lot
- Retail & Hospitality
- Architectural & Museums
- Office & Education
- Industrial & Warehouse



Product	CCT Range	CRI	SDCM	Typ. Flux (lm)* 3000K, 80CRI	Drive Current (mA)	Voltage* (V)	Efficacy (lm/W)* 3000K, 80CRI	LES (mm)
Vero/Vero SE 10B Vero/Vero SE 10C Vero/Vero SE 10D	2700K-6500K	70, 80, 90	2, 3, 4	1215 1640 1110	200 300 250	34.2 30.7 24.9	178	10
Vero/Vero SE 13B Vero/Vero SE 13C Vero/Vero SE 13D	2700K-6500K	70, 80, 90	2, 3, 4	2090 2990 2200	350 500 400	33.4 33.4 30.9	178	13
Vero/Vero SE 18B Vero/Vero SE 18C Vero/Vero SE 18D	2700K-6500K	70, 80, 90	2, 3, 4	4280 6400 4310	700 1050 850	33.9 33.9 28.2	180	18
Vero/Vero SE 29B Vero/Vero SE 29C Vero/Vero SE 29D	2700K-6500K	70, 80, 90	2, 3, 4	13010 16040 11445	1400 1300 1700	50.2 66.7 36.4	185	29

*All measurements are at T_c=25°C. Flux and efficacy values are listed for Vero Series products. Flux and efficacy values for Vero SE products are up to 3% lower than Vero Series products.