

Filter D-Sub

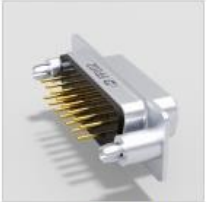
Deltron D-Sub filter connectors are characterized by a very good filter quality. The FP and PI filter connectors specially developed for industrial applications offer excellent protection against EMI and RFI. The products are manufactured according to the standards MIL-C-24308 and IEC 60807 (DIN 41652). A range of 180 to 6800 pF is available. In addition, the filter plate is metalized on the rear side, so that a high HF-tightness is achieved. The filter connectors are available in various versions.



Adapters Filter



Filter and Pi-Filter Solder Pin



Filter and Pi-Filter Solder Pin Assembled



Filter Press Fit Assembled



Filter SMD



Filter Solder Cup



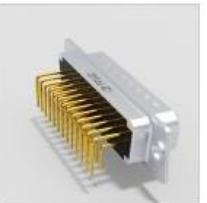
Filter Solder Cup Assembled



Filter Solder Pin 90°, 7.18



Filter Solder Pin 90°, 7.18 Assembled



Filter Solder Pin 90°, 8.4



Filter Solder Pin 90°, 8.4 Assembled



Filter Solder Pin 90°, 9.4



Filter Solder Pin 90°, 9.4 Assembled