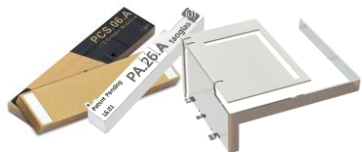




# Antenna Portfolio

Taoglas' comprehensive portfolio of external and embedded cellular antennas, covering 5G/4G, GNSS, Wi-Fi, LoRaWAN frequencies and more, are available in multiple mounting options to suit your requirements.



## Surface Mount

We offer the most comprehensive range of SMD, or surface mount antennas, covering cellular, GNSS, Wi-Fi and manufactured from Ceramic, FR4 and Metal.



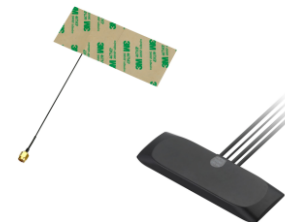
## Pin Mount

Many of our embedded patches are mounted via pin and high grade adhesive to help secure the patch in addition to the soldered pin.



## Permanent Mount

For robust installations on devices and vehicles, our permanent, or screw mount antennas, are best in class for both RF and mechanical performance



## Adhesive Mount

For ease of installation, we have a full range of external and embedded antennas with high grade adhesive backing for a secure mounting



## Magnetic Mount

For temporary, non-destructive mounting, our magnetic mount range offers 5G/4G, GNSS and W-Fi.



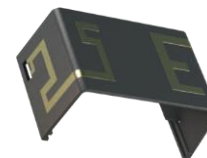
## Terminal Mount

For routers and IoT devices, we offer a full range of high-performing antennas with a variety of terminal mount options.



## Wall & Pole Mount

Many of our antennas are supplied with wall and pole mount kits to make it easy to install, indoor or out, whatever your application.



## LDS

Laser Direct Structuring (LDS) is a process whereby an antenna can be designed onto a plastic carrier or an existing integral part of the device.