

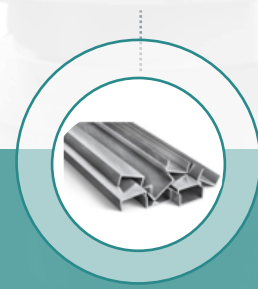
MATERIAL GROUPS WE HANDLE

/ A BRAND OF SOLUTION IN ALL MECHANICAL / SRXTRONIC

PLASTIC



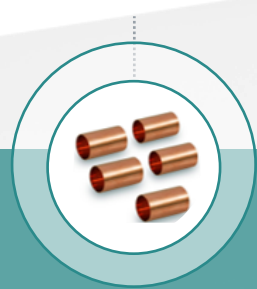
STEEL



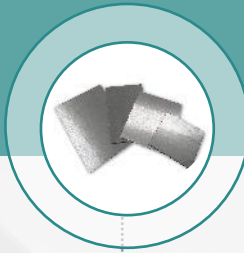
ALUMINIUM ALLOY



COPPER



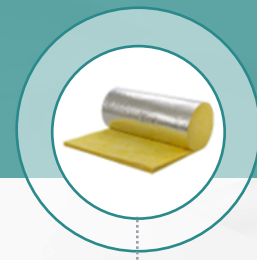
ZINC ALLOY



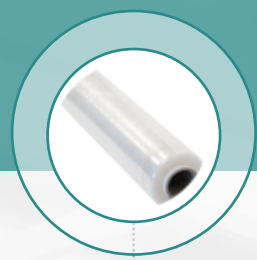
MAGNESIUM



RUBBER



INSULATION



FILM



CUSHION

WHAT MAKES US DIFFERENT

/ A BRAND OF SOLUTION IN ALL MECHANICAL / SRXTRONIC

- ▶ Manufacturer of mechanical parts on drawings
- ▶ Simple part, Multi-process & sub-assemblies

One-stop Mechanical provider

- ▶ Co-design, aid & consultation
- ▶ Material selection
- ▶ Process selection
- ▶ Technical trials & experiments

In house tooling design fabrication

- ▶ Significant time and cost savings
- ▶ 10 days time-saving

Make your work simple

- ▶ **1 MANUFACTURER**
for single part
to system-integration
- ▶ **1 WINDOW**
for multiple processes

PROJECT MANAGEMENT

/ A BRAND OF SOLUTION IN ALL MECHANICAL / SRXTRONIC

4. MASS PRODUCTION

- ▶ OQC (Outgoing Quality Control)
- ▶ Shipment monitoring
- ▶ Periodic quality check



1. DRAWING (2D/3D)

- ▶ Co-design client
- ▶ Design qualification
- ▶ DFM (Design For Manufacturing)



3. TRIAL PRODUCTION

- ▶ First batch full quality check
- ▶ OQC (Outgoing Quality Control)
- ▶ PPAP (Production Part Approval Process)



2. PROTOTYPE

- ▶ Sample qualification
- ▶ FAI (First Article Inspection)



PROTOTYPING

/ A BRAND OF SOLUTION IN ALL MECHANICAL / SRXTRONIC

MANUFACTURING CAPABILITIES

EQUIPMENT MACHINE

- Precision CNC machining
- 3D printing
- EDM
- Foams & electrical insulators
- NCT & laser cutting
- Wire cutting
- Vacuum casting



ALUMINIUM EXTRUSION

/ A BRAND OF SOLUTION IN ALL MECHANICAL / SRXTRONIC

MANUFACTURING CAPABILITIES

MATERIALS : MATERIALS : AL6063 / AL6061 / AL7075

- Complex profiles
- High ratio



PLASTIC INJECTION

/ A BRAND OF SOLUTION IN ALL MECHANICAL / SRXTRONIC

MANUFACTURING CAPABILITIES

EQUIPMENT MACHINE

- Mold design & fabrication
- Insert-molding
- Double-shot injection (dual color)
- Over molding
- Automatic robot ARM
- Painting, printing, laser marking



PRECISION MACHINING

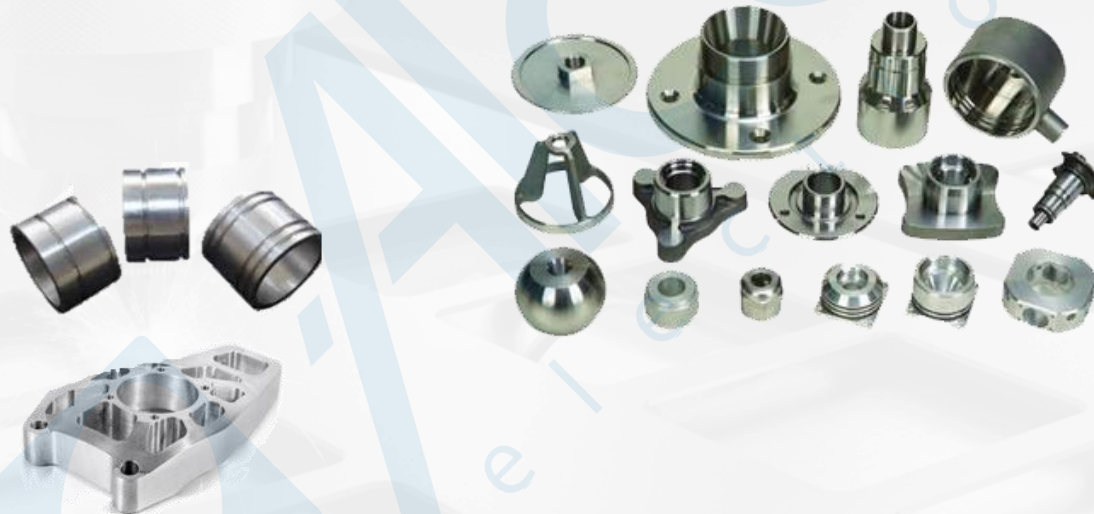
/ A BRAND OF SOLUTION IN ALL MECHANICAL / SRXTRONIC

MANUFACTURING CAPABILITIES

MATERIALS : ALUMINUM / COPPER / STEEL / PLASTIC / BRASS / CARBON / TITANIUM

EQUIPMENT MACHINE

- Milling machine
- 3 Axis / 4 Axis / 5 Axis
- Turning machine
- Power connectors
- Signal pins



DIE CASTING

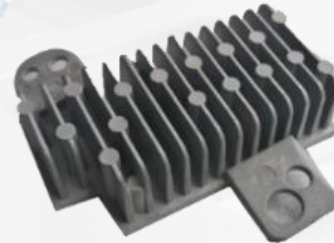
/ A BRAND OF SOLUTION IN ALL MECHANICAL / SRXTRONIC

MANUFACTURING CAPABILITIES

MATERIALS : ALUMINUM / ZINC / MAGNESIUM

- High & low pressure

- Multiple post processes



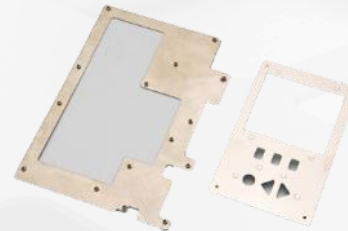
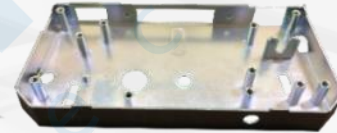
METAL STAMPING

/ A BRAND OF SOLUTION IN ALL MECHANICAL / SRXTRONIC

MANUFACTURING CAPABILITIES

EQUIPMENT MACHINE

- Progressive stamping
- Precision metal stamping
- CNC bending machine
- Robotic laser welding
- NCT sheet metal
- Laser cutting
- Forming machine
- Reviting & assembly



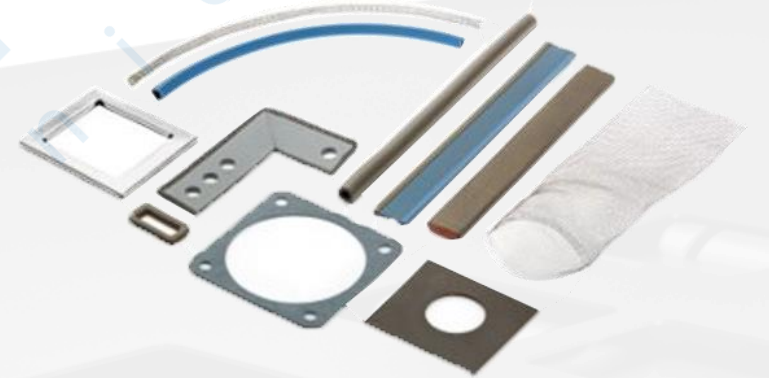
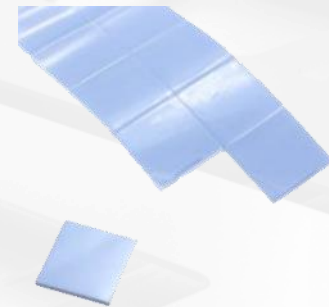
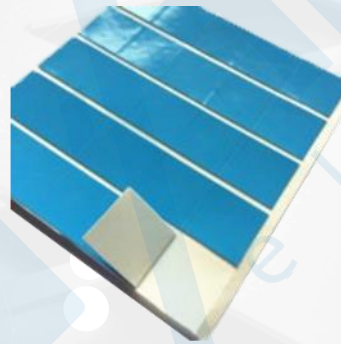
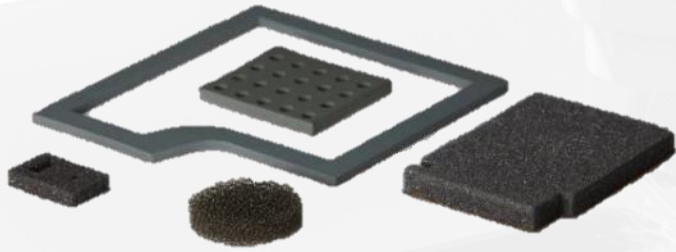
DIE CUTTING

/ A BRAND OF SOLUTION IN ALL MECHANICAL / SRXTRONIC

MANUFACTURING CAPABILITIES

Transformation & Lamination Flexible

Materials: Insulation Film/Mylar/Tape/Rubber/Foam/EMI/ Printing

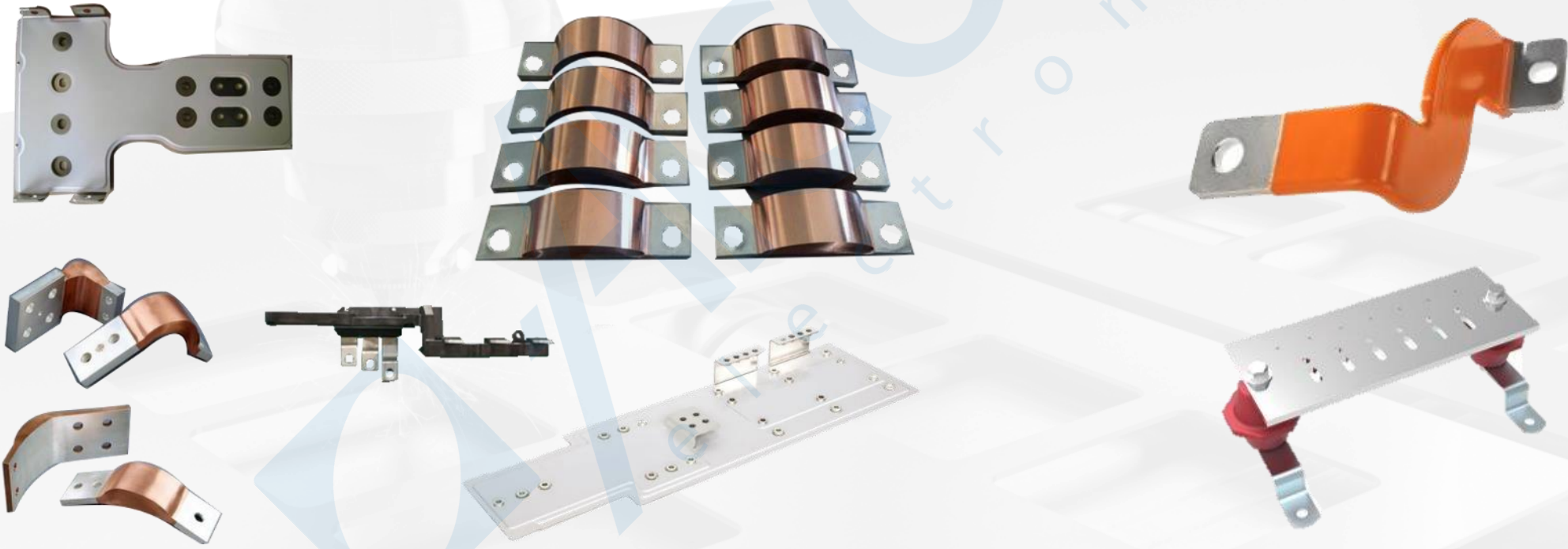


BUSBAR

/ A BRAND OF SOLUTION IN ALL MECHANICAL / SRXTRONIC

MANUFACTURING CAPABILITIES

Rigid Busbar / Flexible Busbar / Laminated Busbar / Overmolded Busbar

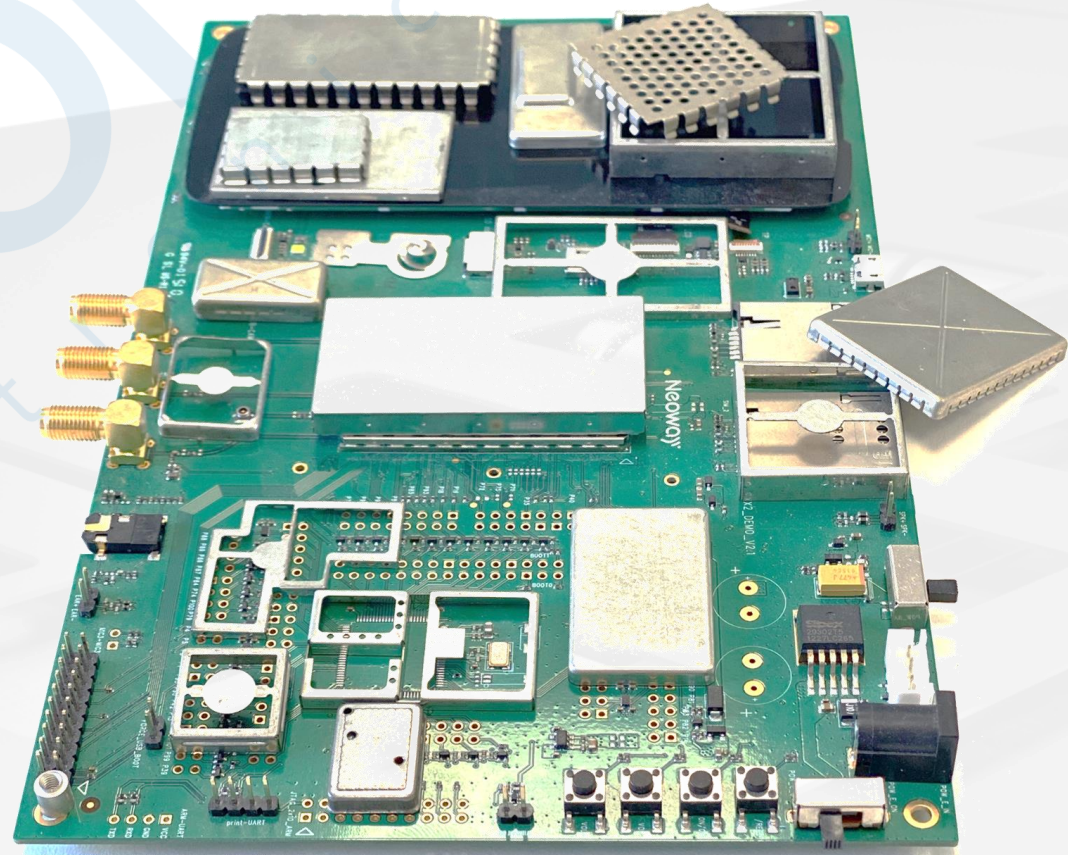


EMI

/ A BRAND OF SOLUTION IN ALL MECHANICAL / SRXTRONIC

MANUFACTURING CAPABILITIES

- Standard & Custom Spring Contacts
- Custom RF Shielding Case (Cover + Frame)

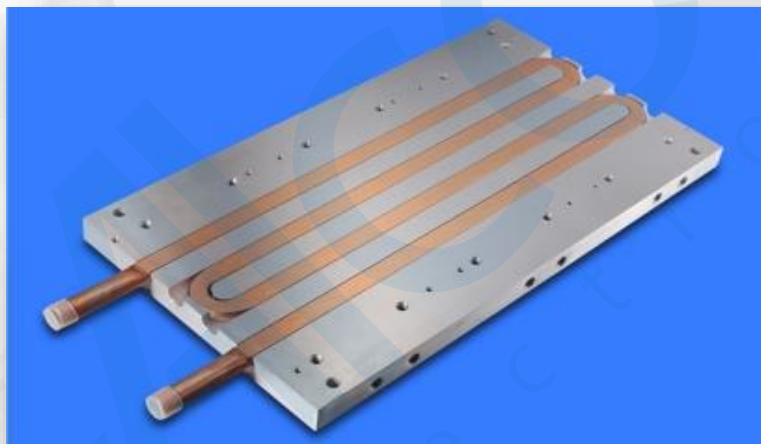
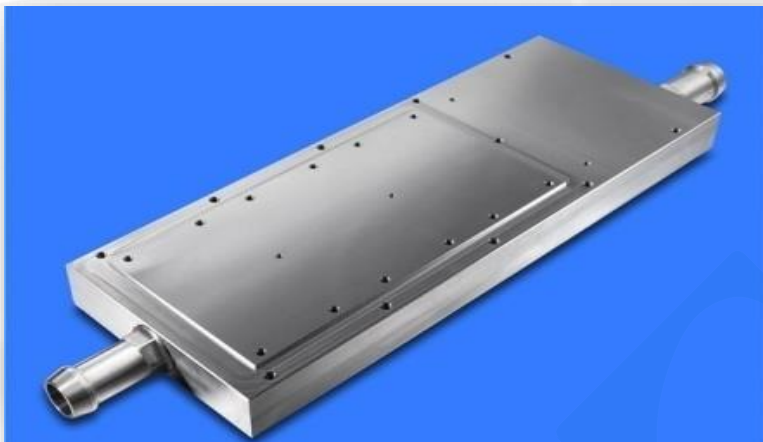


COLD PLATE

/ A BRAND OF SOLUTION IN ALL MECHANICAL / SRXTRONIC

MANUFACTURING CAPABILITIES

Tube & Blister Cold Plates



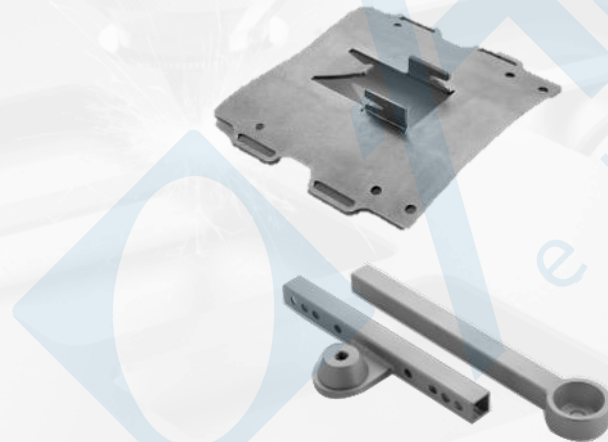
SURFACE TREATMENT

/ A BRAND OF SOLUTION IN ALL MECHANICAL / SRXTRONIC

MANUFACTURING CAPABILITIES

EQUIPMENT MACHINE

- Anodizing (surtec 650)
- Painting
- Chromating
- Nickel & zinc plating
- Powder coating
- Laser marking
- FIP (Form In Place)
- Brushing & polishing
- Silk screen printing
- Packaging

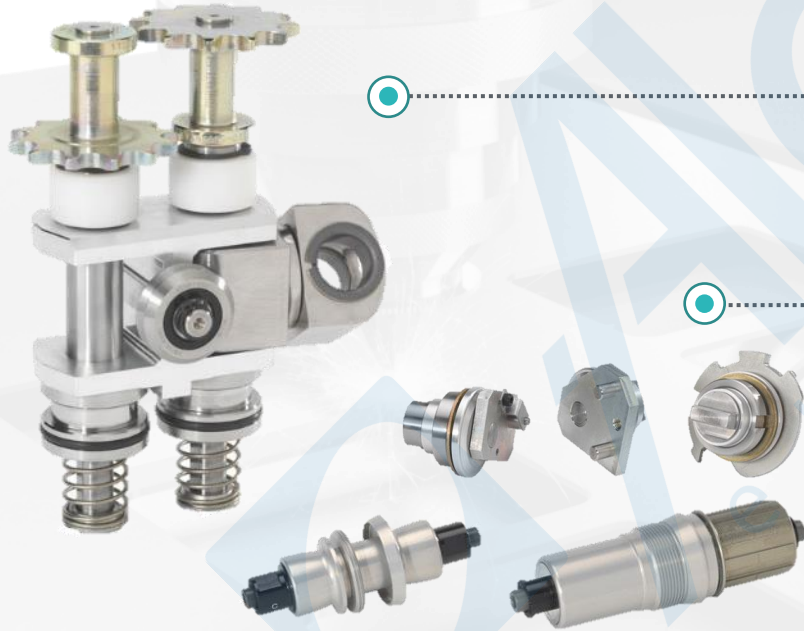


SUB ASSEMBLIES & MULTI PROCESS ASSEMBLIES

/ A BRAND OF SOLUTION IN ALL MECHANICAL / SRXTRONIC

OUR SERVICES

ONE-STOP ASSEMBLIES
OF MULTIPLE PARTS MECHANICAL & ELECTRONICS



High quality standards



Manufacturing
mechanical components

QUALITY

/ A BRAND OF SOLUTION IN ALL MECHANICAL / SRXTRONIC

WE GUARANTEE YOU A **QUALITY CONTROL** PUSHED BY THE IMPLEMENTATION OF SPECIFIC TESTS "IN HOUSE"

QUALITY PRACTICES

- FAI
- PFMEA
- Process flow diagram
- MSA
- Process capability
- Control plan
- Run@Rate
- 8D



QUALITY CONTROL

- Projector
- CMM
- Guage
- JIG
- Salt spray
- Humidity
- Thermal shock
- Vibration

QUALITY

/ A BRAND OF SOLUTION IN ALL MECHANICAL / SRXTRONIC

WE GUARANTEE YOU A **QUALITY CONTROL** PUSHED BY THE IMPLEMENTATION OF SPECIFIC TESTS "IN HOUSE"



INDUSTRY SYSTEM
ISO 9001



AUTOMOTIVE
IATF 16949



TRANSPORTATION
IRIS/22163:2017



ENVIRONMENT
ISO 14001



MEDICAL
ISO 13485

