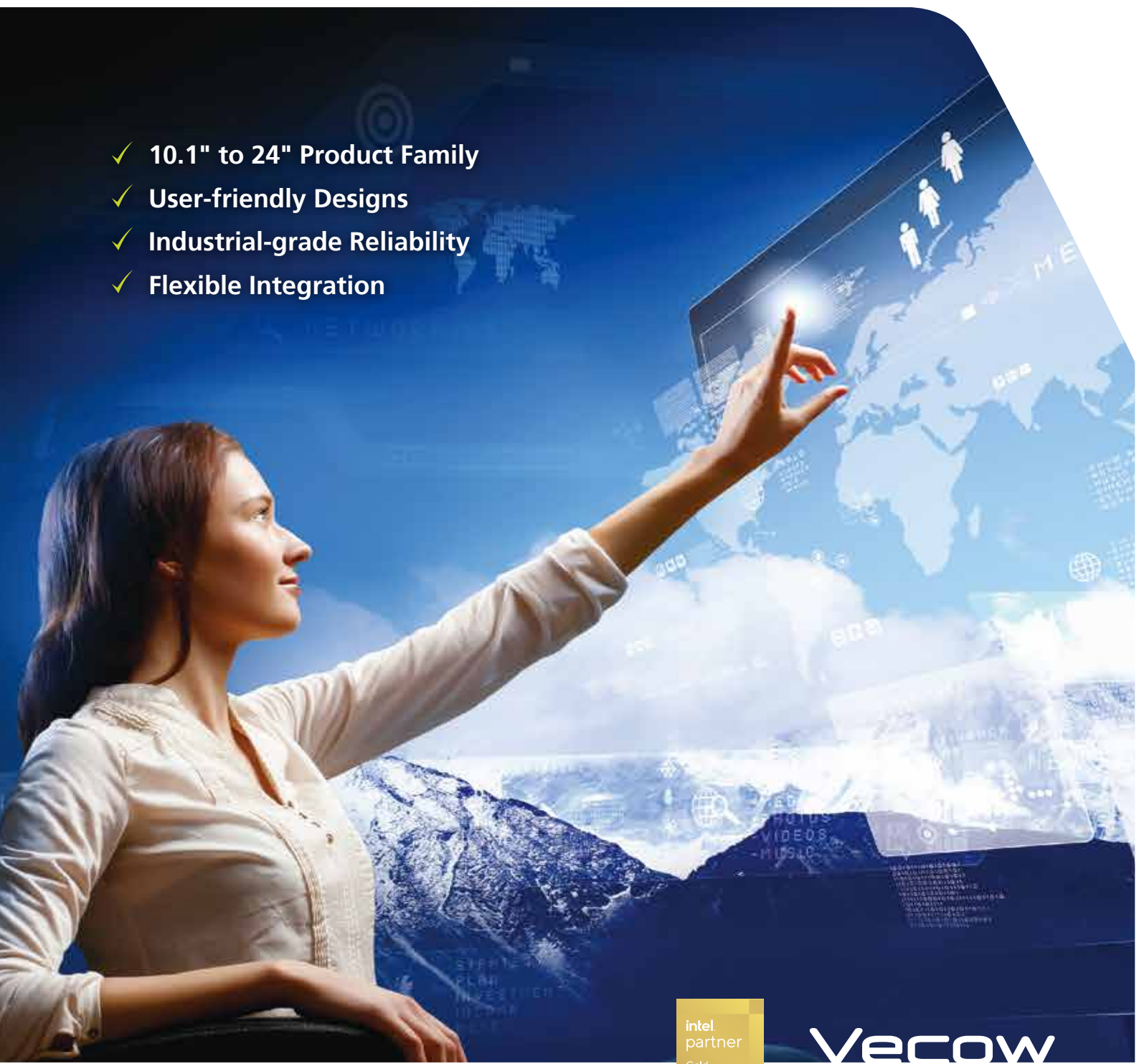


Trusted Multi-Touch Solutions

Industrial-grade Panel PCs and Displays

- ✓ 10.1" to 24" Product Family
- ✓ User-friendly Designs
- ✓ Industrial-grade Reliability
- ✓ Flexible Integration



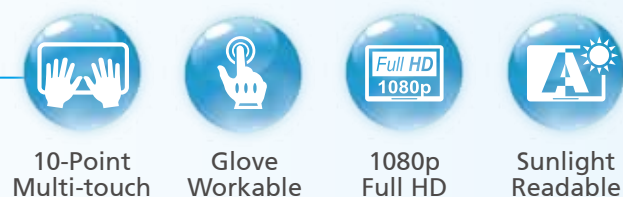
Vecow

Optimized Industrial-grade Multi-Touch Solution

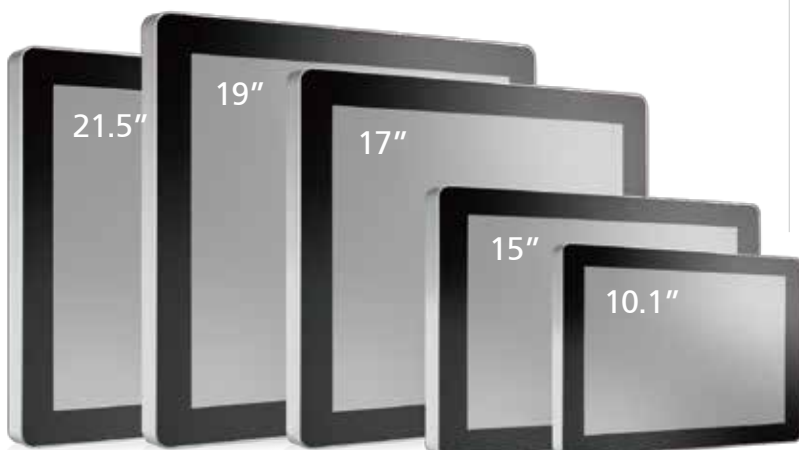
Industrial-grade Reliability



User-friendly Designs



Versatile Offerings



Flexible Integration



Accelerate Intelligent Automa

In today's smart city and smart factory, we are served with versatile multi-touch solutions to enhance quality of service, productivity of
Featuring industrial-grade reliability, user-friendly designs, versatile size offering, flexible integration, Vecow multi-touch solution is yo



Smart Retail

Featuring 10-point multi-touch, glove workable, anti-scratch surface, sunlight readable, outstanding th
computing solution for Self-Service Kiosk, People Counting, Smart Mirror, Welcome & Cleaning Robot, Pul

Self-Service KIOSK

Vecow industrial-grade Panel PC serves outstanding interoperating ability with thermal camera, RFID, cashier, bar code reader and even thermal printer to make your Point-Of-Sales, Point-Of-Information or any smart Self-Service solutions possible.



People Counting

Integrating PoE 3D/2D camera, Intel RealSense technology, WiFi/LTE wireless module, Vecow industrial-grade Panel PC provides a smart people counting solution package for store managers to optimize floor plan, campaign targets and operation decisions.

tion with Smart Panel PCs

employee, preference of customer, trend of market, efficiency of management, and even earnings of share in a more interactive way. Our great choice for smart retail, factory automation, and any industrial IoT or edge AI applications.



Third-party hardware and software compatibility, remote manageability, Vecow Panel PCs and Displays provide trusted public Surveillance, and any smart retail applications in our daily life.

An isometric illustration of a modern retail store layout. The store is labeled "Fashion Store". It features various interactive technologies: a smart mirror showing a woman's reflection and outfit options; a smart panel PC displaying "Can I Help You? Just ask your question"; a welcome and cleaning robot; a cashier counter; and a smart panel PC displaying "MTC-1010W". A diagram shows the robot connected to a PC and cameras (2D and 3D).

Smart Mirror

Powered by high-performance computing engine, running with multiple 3D/2D cameras, sensors, AI accelerator platform for real-time customer service, third-party real-time transaction process, Vecow Panel PC makes modern shopping experience possible.

Welcome & Cleaning Robot

Compact and Performance-driven platform supports robotic OS, facial recognition, OCR, SLAM, data collection, and any customized missions at the venue, Vecow Open Frame Panel PC is your flexible solution to tailor-made service robots as project requirements.

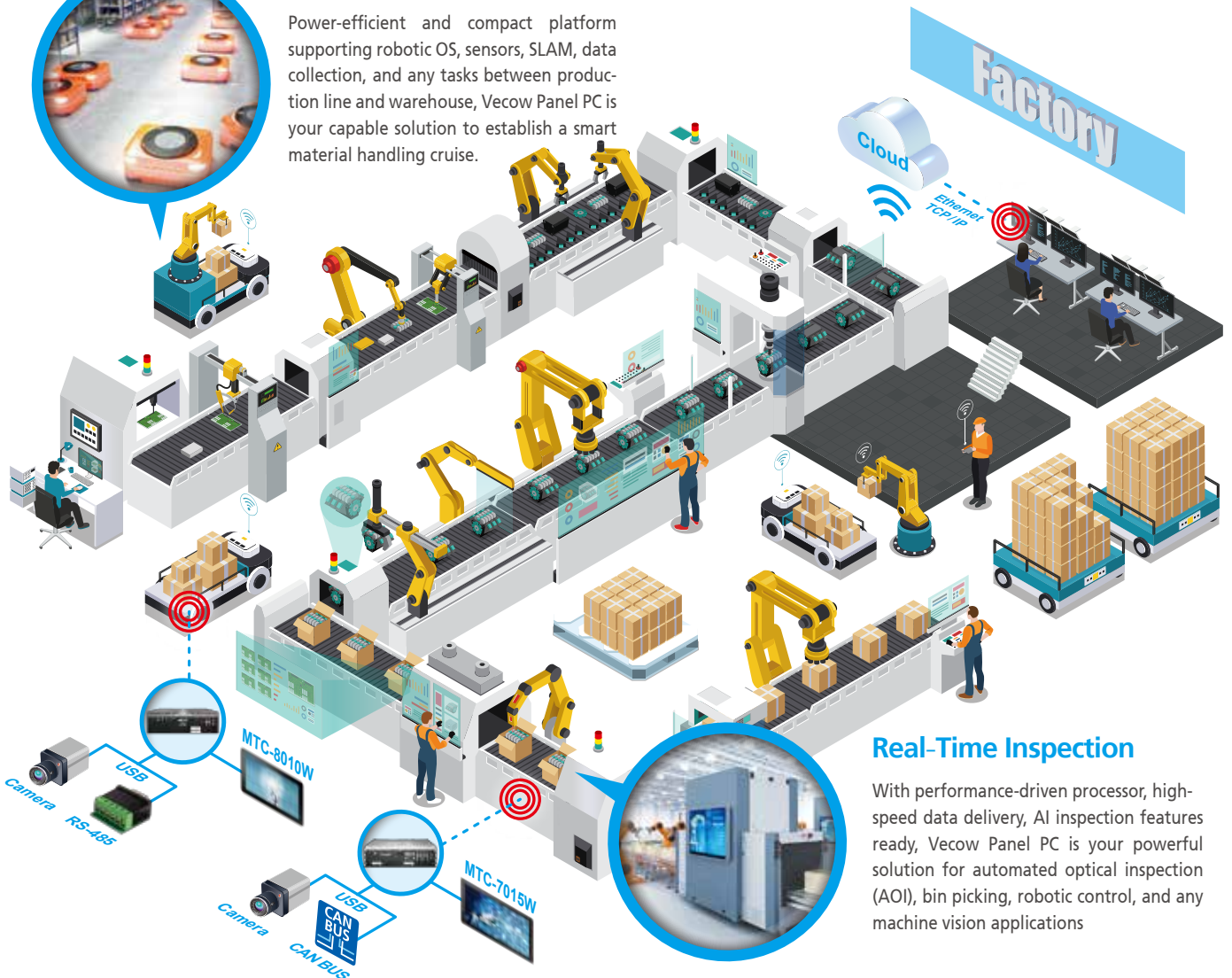
MTC & MTD



Factory Automation

AMR/AGV

Power-efficient and compact platform supporting robotic OS, sensors, SLAM, data collection, and any tasks between production line and warehouse, Vecow Panel PC is your capable solution to establish a smart material handling cruise.



Real-Time Inspection

With performance-driven processor, high-speed data delivery, AI inspection features ready, Vecow Panel PC is your powerful solution for automated optical inspection (AOI), bin picking, robotic control, and any machine vision applications



Order Info

High Performance Panel PC Solution



MTC-7000 Series

- Size : 10.1" , 15" , 15.6" , 21.5"
- 10-point Projected Capacitive Multi-touch Screen
- 8th Generation Intel® Core™ i7/i5/i3 U-series Processor (Whiskey Lake)
- DC 9V to 48V Wide Range Power Input
- IP65 Front Bezel Design

Power Efficient Panel PC Solution



MTC-8000 Series

- Size : 10.1" , 15" , 15.6" , 21.5"
- 10-point Projected Capacitive Multi-touch Screen
- Intel Atom® x7-E3950 Processor
- DC 9V to 36V wide range power input
- Fanless design supports -10°C to 60°C operating temperature



MTC-1000 Series

- Open Frame Architecture
- Size : 10.1" (Other Size by request)
- 10-point Projected Capacitive Multi-touch Screen
- Intel Atom® x7-E3950 Processor
- DC 9V to 36V wide range power input

Multi-Touch Display



MTD-6000 Series

- Size : 10.1, 12.1", 15", 17", 19", 21.5", 24"
- 10-point Projected Capacitive Multi-touch Screen
- 7H Hardness Anti-Scratch Surface
- Landscape Mode and Portrait Mode supported
- DC 12V