

LoRaWAN Devices



MultiTech Conduit® 300 Series IoT Gateway

The Conduit® 300 Series programmable gateway (MTCDT3AC Series) features mPower™ Edge Intelligence enables streamlined edge-to-cloud orchestration, management and analytics together with a high performance and built-in compatibility with leading IoT software platforms.



MultiTech Conduit® IP67 200 Series

The new Conduit® IP67 200 Series Base Station (MTCDTIP2 Series) includes features of the Conduit AP access point, enclosed in a chassis that will withstand harsh indoor or outdoor environments and having capabilities found in the MultiTech Conduit IP67 base station.



MultiTech Conduit® IP67 Base Station

The Conduit® IP67 Base Station (MTCDTIP Series) is a highly scalable, ruggedized IoT certified gateway solution, specifically designed for outdoor LoRa® public or private network deployments.



MultiTech Conduit®

The Conduit® (MTCDDT Series) is the industry's most configurable, manageable, and scalable LoRa gateway for industrial IoT applications. This indoor industrial gateway, ideal for environments that require metal casing for protection against particles and debris and require an industrial temperature range.



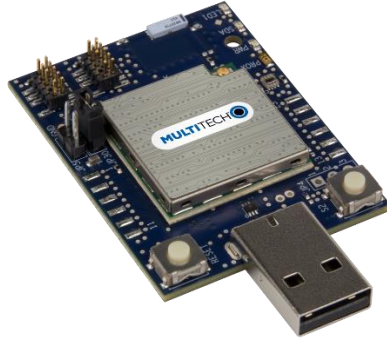
MultiTech Conduit® AP

The Conduit® AP (MTCAP & MTCAP2 Series) conveniently provides deep in-building connectivity and improved performance for network operators and enterprises connecting thousands of IoT assets by harnessing the power of the LoRaWAN® protocol.



MultiTech xDot®

The xDot® (MTXDOT Series) is the latest in a series of our LoRa® long range, low power wireless modules. The xDot is our smallest, lowest power solution that offers significantly longer range and improved radio performance compared to traditional wireless solutions—resulting in greater transmission range and reduced capital expense.



MultiTech xDot® Micro Developer Kit

The xDot® Micro Developer Kit (MTMDK Series) is a USB dongle that allows a developer to plug in a xDot (MTXDOT Series) and start developing their application.



MultiTech mDot™

The mDot™ (MTDOT Series) offers significantly longer range and improved radio performance compared to traditional wireless solutions—resulting in greater transmission range and reduced capital expense. Inexpensive LoRaWAN® Ready, Low-Power Wide Area Network (LPWAN) RF module, capable of 2-way communication over distances in excess of 10 miles / 16 km with excellent noise immunity and the ability to penetrate deep into buildings and through structures.



MultiTech Reveal™

MultiTech Reveal™ **LoRaWAN Wireless Temperature Sensors** are designed to accurately detect ambient air temperature and use air flow to measure levels. Models are available for both indoor and outdoor/industrial use.



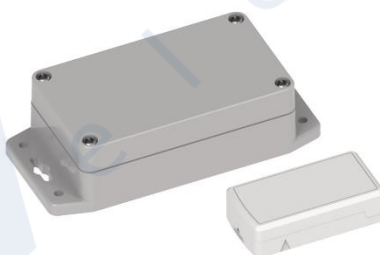
MultiTech Reveal™

MultiTech Reveal™ **LoRaWAN Wireless Proximity Sensors** detect contact between two wires, proximity detection with a magnet, range with an ultrasonic signal, while the Reveal UltraSonic Level Sensors provide high accuracy proximity detection and ranging in air.



MultiTech Reveal™

The MultiTech Reveal™ **LoRaWAN Wireless Push Button Sensor** transmits on a button press event. They can be used as a panic button wearable device, personal emergency response system (PERS), remote control or other remote push button applications. When the button is pressed, an alert is sent to the wireless network.



MultiTech Reveal™

MultiTech Reveal™ **LoRaWAN Wireless Movement Sensors** use an ultra sensitive internal accelerometer to detect movement of a critical asset. When movement is detected that exceeds a certain threshold, an alert is sent over the wireless network. Reveal Tilt Sensors detect transitions between horizontal and vertical orientation, as well as reporting the angle of the tilt.



MultiTech Reveal™

MultiTech Reveal™ **LoRaWAN Wireless Leak Detection Sensors** use a probe to detect the presence of water. When the presence of water is detected, an alert is sent over the wireless network to prevent a potentially catastrophic event.



MultiTech Reveal™

The MultiTech Reveal™ **LoRaWAN Wireless Industrial Sensors** are designed for industrial standards such as 4-20mA current loops, DIO, and more. If the measured value rises above or falls below the configured thresholds, an alert is sent over the wireless network.