

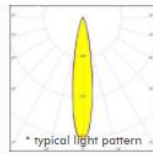
AMY-35

Versatile low profile lens family for compact luminaires

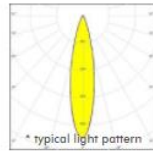
Ø35 mm variant optimized for 6 mm LES size COBs



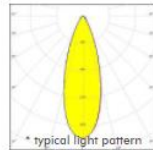
C17794_AMY-35-S
~18° spot beam



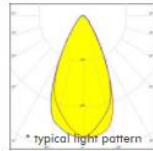
C17795_AMY-35-M
~24° medium beam



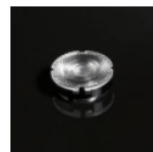
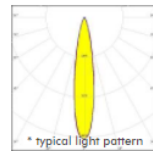
C17796_AMY-35-W
~36° wide beam



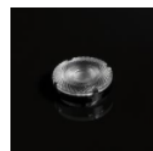
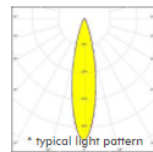
C17797_AMY-35-WW
~60° wide beam



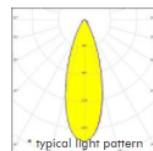
CP17970_AMY-35-S-B
~18° spot beam.
Assembly with holder B
compatible with Ø35 mm
BJB + B+W connectors.
Black version.



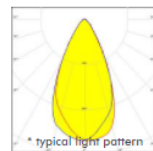
CP17971_AMY-35-M-B
~24° medium beam.
Assembly with holder B
compatible with Ø35 mm
BJB + B+W connectors.
Black version.



CP17972_AMY-35-W-B
~36° wide beam.
Assembly with holder B
compatible with Ø35 mm
BJB + B+W connectors.
Black version.



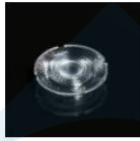
CP17973_AMY-35-WW-B
~60° wide beam.
Assembly with holder B
compatible with Ø35 mm
BJB + B+W connectors.
Black version.



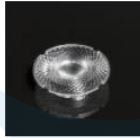
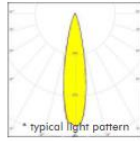
AMY-45

Versatile low profile lens family for compact luminaires

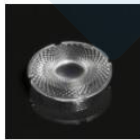
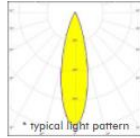
Ø45 mm variant optimized for 10 mm LES size COBs



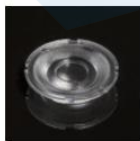
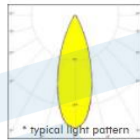
C17790_AMY-45-S
~18° spot beam



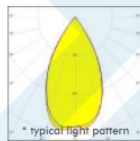
C17791_AMY-45-M
~24° medium beam



C17792_AMY-45-W
~36° wide beam



C17793_AMY-45-WW
~60° wide beam



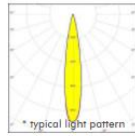
AMY-50

Versatile low profile lens family for compact luminaires

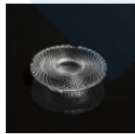
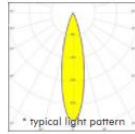
Ø50 mm variant optimized for 10 mm LES size COBs



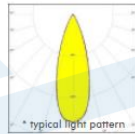
C17686_AMY-50-S
~18° spot beam



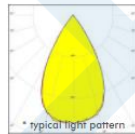
C17687_AMY-50-M
~24° medium beam



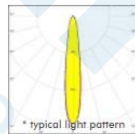
C17688_AMY-50-W
~36° wide beam



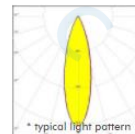
C17689_AMY-50-WW
~60° wide beam



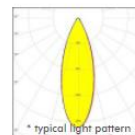
C18040_AMY-50-S2
~15° spot beam



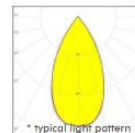
CP17690_AMY-50-M-C
~24° medium beam.
Assembly with holder C
compatible with HEKLA
sockets and connectors.
Black version.



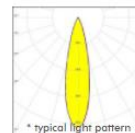
CP17691_AMY-50-W-C
~36° wide beam.
Assembly with holder C
compatible with HEKLA
sockets and connectors.
Black version.



CP17692_AMY-50-WW-C
~60° wide beam.
Assembly with holder C
compatible with HEKLA
sockets and connectors.
Black version.



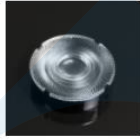
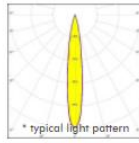
CP17694_AMY-50-S-C
~18° spot beam.
Assembly with holder C
compatible with HEKLA
sockets and connectors.
Black version.





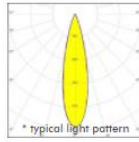
CP17772_AMY-50-S-B

~18° spot beam.
Assembly with holder B
compatible with Ø35 mm
BJB + B+W connectors.
Black version.



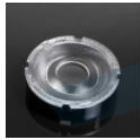
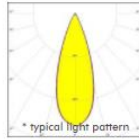
CP17773_AMY-50-M-B

~24° medium beam.
Assembly with holder B
compatible with Ø35 mm
BJB + B+W connectors.
Black version.



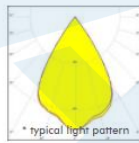
CP17774_AMY-50-W-B

~36° wide beam.
Assembly with holder B
compatible with Ø35 mm
BJB + B+W connectors.
Black version.



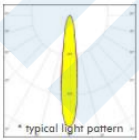
CP17775_AMY-50-WW-B

~60° wide beam.
Assembly with holder B
compatible with Ø35 mm
BJB + B+W connectors.
Black version.



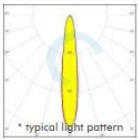
CP18041_AMY-50-S2-C

~15° spot beam.
Assembly with holder C
compatible with HEKLA
sockets and connectors.
Black version.



CP18042_AMY-50-S2-B

~15° spot beam.
Assembly with holder B
compatible with Ø35 mm
BJB + B+W connectors.
Black version.

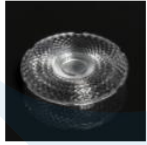
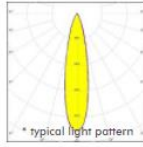


AMY-70

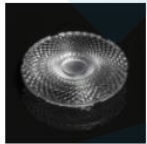
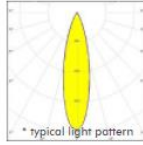
Versatile low profile lens family for compact luminaires
Ø70 mm variant optimized for 14.5 mm LES size COBs



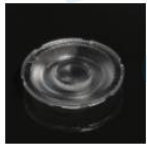
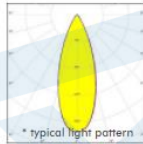
C17776_AMY-70-S
~18° spot beam



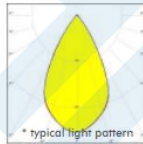
C17777_AMY-70-M
~24° medium beam



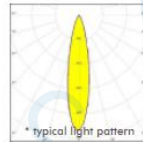
C17778_AMY-70-W
~36° wide beam



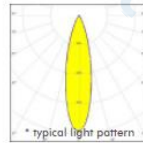
C17779_AMY-70-WW
~60° wide beam



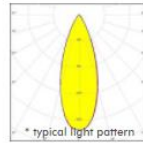
CP17782_AMY-70-S-C
~18° spot beam.
Assembly with holder C
compatible with HEKLA
sockets and connectors.
Black version.



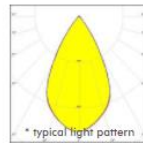
CP17783_AMY-70-M-C
~24° medium beam.
Assembly with holder C
compatible with HEKLA
sockets and connectors.
Black version.



CP17784_AMY-70-W-C
~36° wide beam.
Assembly with holder C
compatible with HEKLA
sockets and connectors.
Black version.



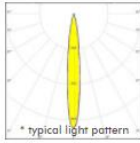
CP17785_AMY-70-WW-C
~60° wide beam.
Assembly with holder C
compatible with HEKLA
sockets and connectors.
Black version.





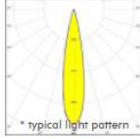
CP17786_AMY-70-S-B

~18° spot beam.
Assembly with holder B
compatible with Ø35 mm
BJB connectors. Black
version.



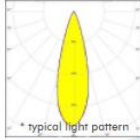
CP17787_AMY-70-M-B

~24° medium beam.
Assembly with holder B
compatible with Ø35 mm
BJB connectors. Black
version.



CP17788_AMY-70-W-B

~36° wide beam.
Assembly with holder B
compatible with Ø35 mm
BJB connectors. Black
version.



CP17789_AMY-70-WW-B

~60° wide beam.
Assembly with holder B
compatible with Ø35 mm
BJB connectors. Black
version.

