

LCD Touch Screen Modules

GT-GP-series -GUI controlled-

A touch display product that **does not require writing** lines of code, and can be developed **intuitively** with a mouse or touch operation. Quickly and easily add touchscreen control to your system.



● New GT RELEASED SOON!

GT-GP is the newest member of the NORITAKE TFT family.

Speedy development with GUI objects.

GT (LCD Touch Screen Modules) Type list

GT-CP
Command Controlled

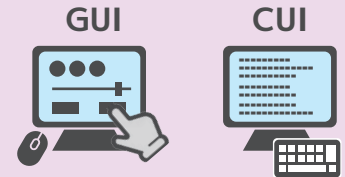
GT-VP
Digital Video Input

NEW!
GT-GP
GUI controlled

What is GUI?

GUI (Graphical User Interface) means intuitively operating a screen with visually displayed buttons and icons, using a mouse or touch panel, as opposed to having to type characters or input commands, as with a "CUI".

GUI is **easier to understand, and easier for beginners to develop.**

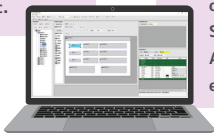


● Features

1. Intuitive development with GUI design software!

GUI object example

Text, Button, Slider, Checkbox etc.



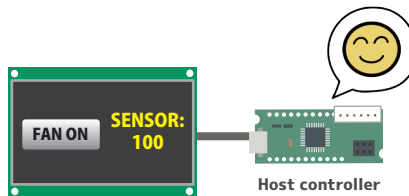
Event example

Page moving, Modifying object parameters, Signaling to host, Advanced control, etc.

Development support software for GUI design is **free of charge**. Intuitively design the screen by placing GUI objects on each page by **dragging and dropping**.

In "**Event setting**" you can set the action when the object is touched. **No program code writing** for the display is required, enabling rapid development.

2. Less load on the host controller!



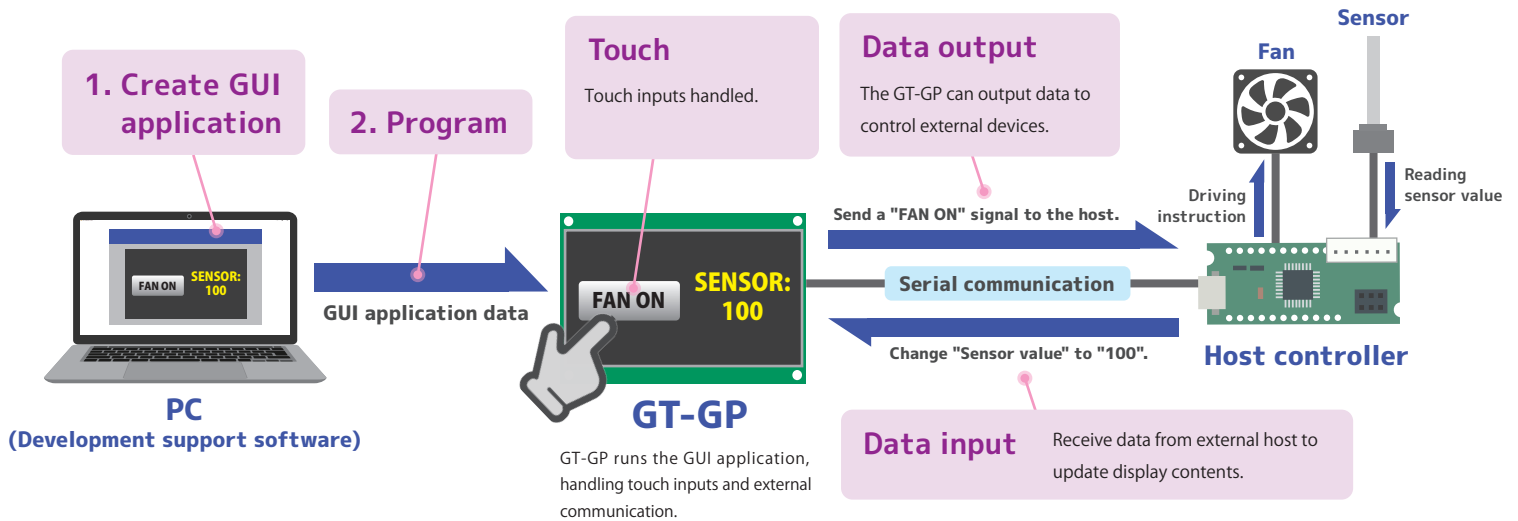
The GT-GP **takes care of the user interface, handling touch processing and screen updates**, thus minimizing the load on the host.

3. Superior touch performance!



The GT-GP is equipped with our unique high-sensitivity **capacitive** touch panel. The unique structure allows comfortable touch operation even under severe conditions, such as through **gloves or covers**, or in a **wet environment**.

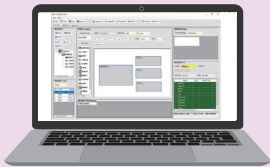
● Example Touchscreen user interface for Sensor and Fan



● Development Process

◆ Development

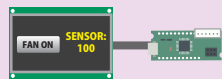
1. Create GUI screen & write to GT-GP



Development support software

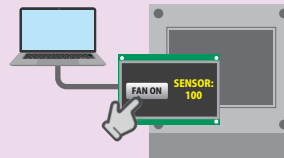
Develop the GUI screen by setting the layout of each object, and the processing (event) to occur when touched. When done, write the completed application to the GT-GP's internal FROM.

2. Host Settings



Connect the GT-GP to the host and complete any required host-side programming.

3. Housing design & sensitivity adjustment

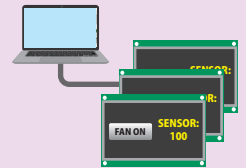


Design of the housing in which the GT-GP is mounted and adjustment of the touch sensitivity* for the structure of the housing (thickness of cover glass, etc), followed by an overall evaluation.

*Touch package data" is available.

◆ Production

Production Programming

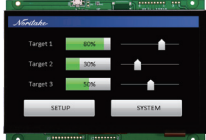


Program the GUI application, and touch settings, etc, to production units.*

*Programming tool is available.

● Lineup / specifications

7 inch size product



Display Resolution (pixels)	800 x 480
PCB Size (mm)	165.0 x 118.5
Brightness [Typ.] 25°C	850 cd/m ²
Interfaces	UART, I ² C, SPI, USB
Touch Detection	Metallized Projective Capacitive Touch

*Final specifications are subject to change.

Touch tuning may be required for optimal performance, depending on usage environment, and product housing, etc.

itron

NORITAKE ITRON CORPORATION

Noritake

The information desk

Product demos (online available), quotations, technical questions, etc ...

Main office

Noritake Europa GmbH (Frankfurt am Main)

Kurhessen Strasse3, 64546 Mörfelden-Walldorf, Germany

Tel : +49 (0)6105-2092-20

Email: electronics@noritake.de

Germany and Austria

Noritake Europa GmbH (Munich)

Bahnhofstrasse 4b, 85386 Eching, Germany

Tel : +49 (0)89-321-429-20

Email: munich@noritake.de

U.K. and Ireland, Italy, Spain, Portugal, Scandinavia

Itron (U.K.) Limited

Vantage House, Harfreys Road, Harfreys Industrial Estate, Great Yarmouth, Norfolk, NR31 0LS, U.K.

Tel : +44 (0)1493 601144

Email: sales@noritake-itron.com