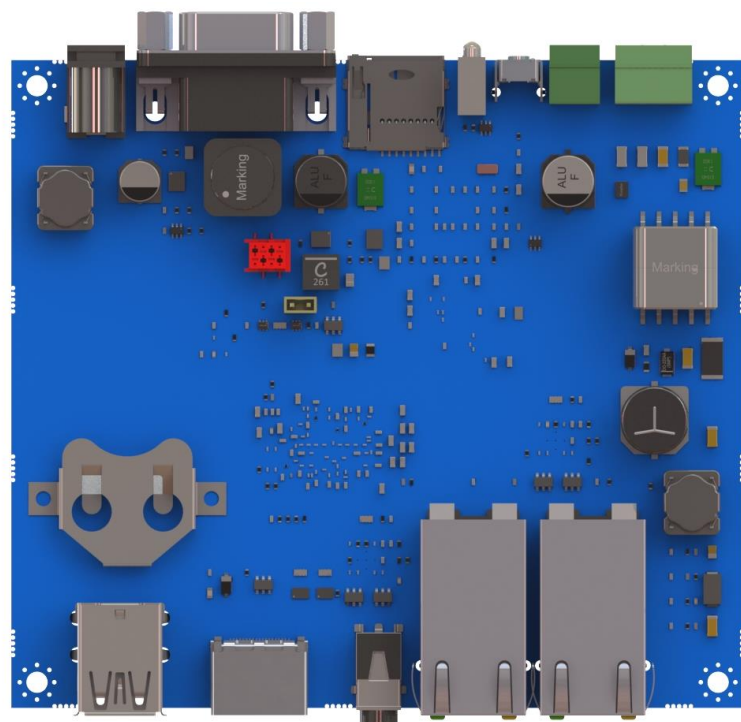


V. Board RK3568

High Performance Single Board Computer based on RockChip® RK3568 series.



FEATURES

CPU	<ul style="list-style-type: none"> RockChip RK3568 CPU, Quad Core ARM Cortex-A55 @ 1.8GHz RockChip RK3568J CPU, Quad Core ARM Cortex-A55 @ 1.8GHz
CORES	4
MEMORY	Up to 8GB LPDDR4 / 3200 MTs
GRAPHICS	<ul style="list-style-type: none"> 2D graphics, 3D graphics and General Purpose computing on GPU The GPU supports these compute API standards: OpenCL 2.0 Full Profile OpenGL ES 1.1, 2.0, and 3.2 Vulkan 1.0 and 1.1.
VIDEO INTERFACES	<ul style="list-style-type: none"> HDMI up to 4K @ 60Hz Optional eDP up to 4K @ 60Hz LVDS Dual Channel up to Full HD @ 60Hz via ePD bridge
VIDEO PROCESSING	<ul style="list-style-type: none"> HEVC/H.265, VP9, AV1 HW decoding, up to 8k @60. AVC/H.264, HEVC/H.265 encoding
AUDIO	Build in I2S (on PMIC RK-809)
NETWORKING	• 2 x Gb Ethernet interface

HIGHLIGHTS

- CPU RK3568/RK3568J
- CONNECTIVITY 2x GbE (one PoE)
- Fully IEEE 802.3bt (POE+)

APPLICATIONS



Singel 3 | B-2550 Kontich | Belgium | Tel. +32 (0)3 458 30 33
 info@alcom.be | www.alcom.be
 Rivium 1e straat 52 | 2909 LE Capelle aan den IJssel | The Netherlands
 Tel. +31 (0)10 288 25 00 | info@alcom.nl | www.alcom.nl

POWER SUPPLY	<ul style="list-style-type: none"> +17 to +26 VDC (on Jack connector) +36V to +57V input Voltage (on POE)
USB	• 2 x USB HOST 3.0
MASS STORAGE	• eMMC soldered on board I70408
PERIPHERAL INTERFACES	<ul style="list-style-type: none"> 1x uSD card on SDIO Bus 2x RS232 (1 x Linux Console) 1x Digital GPIO INPUT (up to 32V) 1x Driver Relay 12V
OPERATING SYSTEM	<ul style="list-style-type: none"> Linux Yocto Android
DIMENSIONS	113 x 100 mm
OPERATING TEMPERATURE*	Consumer Industrial (up to 125°C Tj*)

* Valid for all components except CPU. Customer shall consider junction temperature for CPU. Temperature will widely depend on application. Specific cooling solutions could be necessary for the final system.