

## 5G Outdoor Small Cell and AI/Machine Learning Applications

# Pole Mountable Multi-access Edge & AI Server

Joint release by  
ADLINK Technology  
Charles Industries



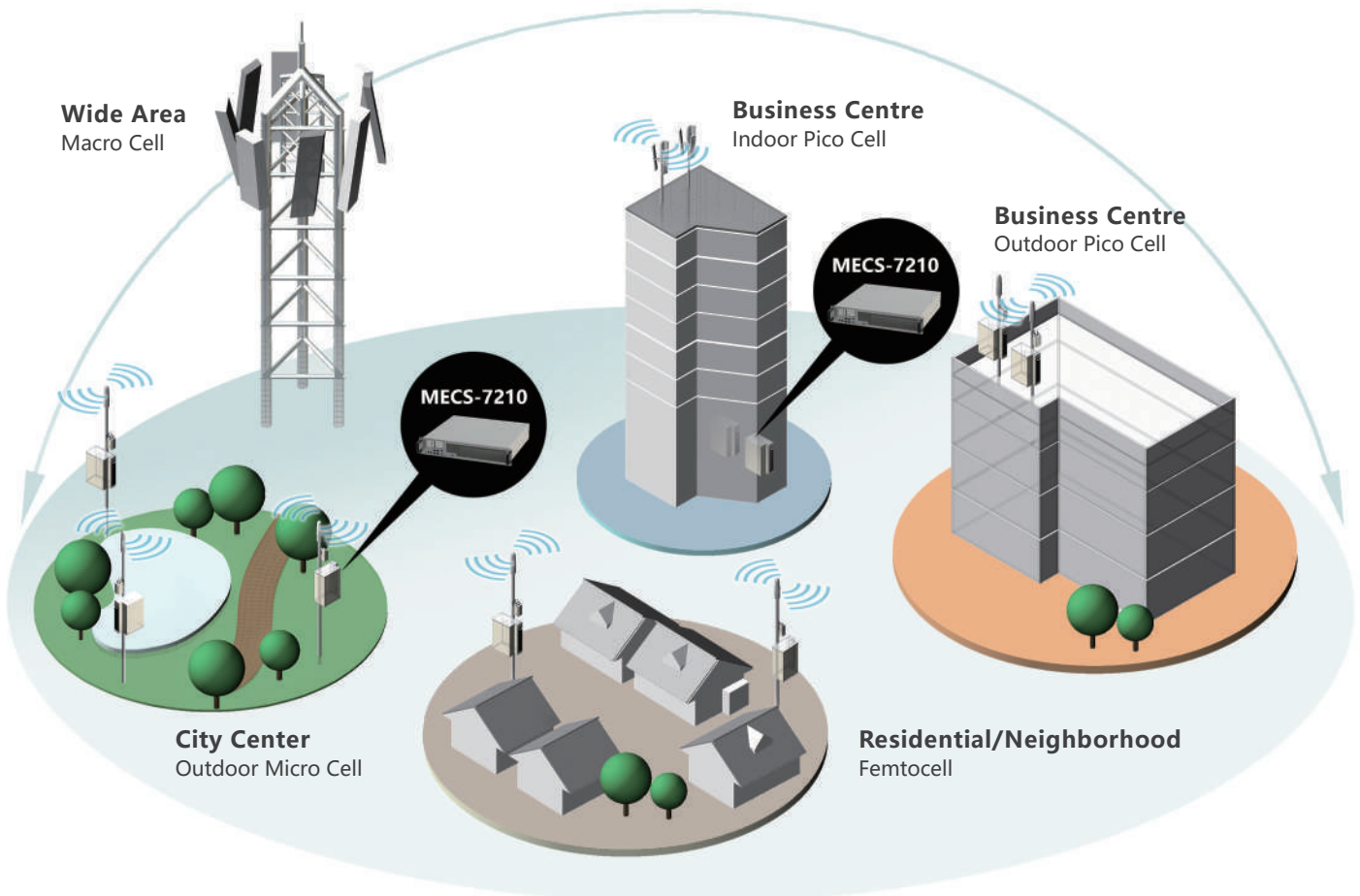
[www.adlinktech.com](http://www.adlinktech.com)



## Industry's First Pole Mountable Multi-access Edge Server for 5G Outdoor Small Cell and AI/Machine Learning Applications

### ■ Demand for Computing and Intelligence at the Edge

A whole host of new data-intensive and latency-sensitive applications are pushing data compute resources to the edge of the network. Emerging applications such as **autonomous vehicles**, **virtual and augmented reality**, **smart city**, **smart transportation**, and **IoT aggregation** require real-time processing for optimized decision making and functioning of the application. Latencies approaching 1 msec will be required for acceptable user experiences. This drives the need for a myriad of small scale or micro data centers located very close to the data being generated. Extended temperature hardened servers protected in environmentally sealed and cooled enclosures are vital to enable these applications to provide successful operation for providers and users.







## ■ Pole Mountable Edge Server

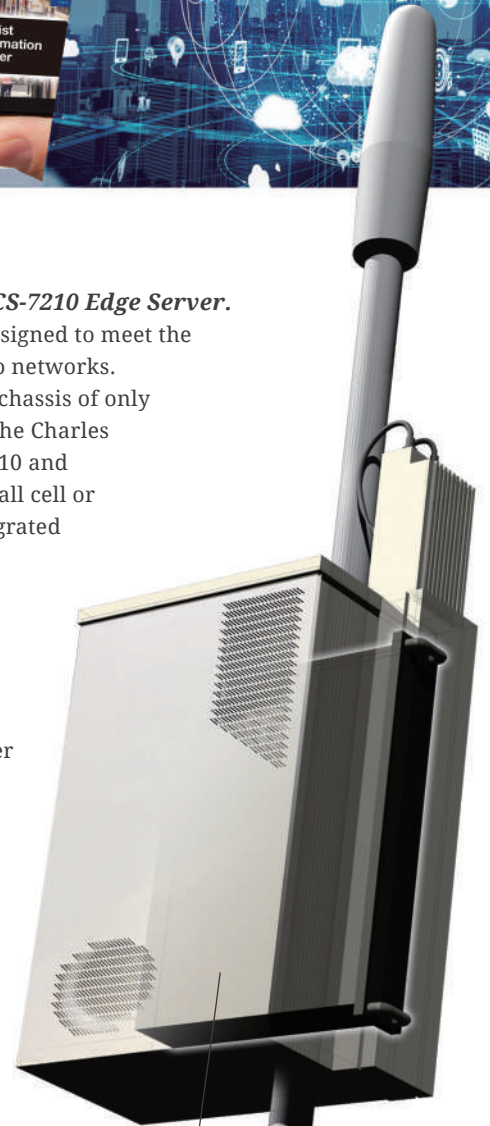
*Charles Industries has teamed with ADLINK Technology to house the MECS-7210 Edge Server.*

ADLINK's MECS-7210 is an industry leading Multi-access Edge Computing server designed to meet the requirements of ultra-low latency, high bandwidth, and real time access to 5G radio networks. The server features an extended temperature range of - 5°C to +55°C and a shallow chassis of only 420mm (16.5 inch) which make it ideally suited for traditional Telecom locations. The Charles Micro-Edge Data Center SC102 enclosure was designed specifically for the MECS-7210 and provides a reliable and protected environment to position a compute node on a small cell or 5G pole. The enclosures are self-contained, secure low profile units that come integrated power and cooling and are GR-487 compliant.

This partnership provides the industry's first outdoor pole mountable AI MEC solution. The solution is a key cost-effective element to enable smart city and advanced community use cases. This includes a multitude of locate anywhere platforms for processing data to enable autonomous vehicles becoming a reality. Placing micro-edge compute platforms in close proximity with 5G radios can further enable AI and machine learning applications to emerge by allowing fast enough data processing to allow users to conduct interactions in real time. There are a growing number of new smart city services and applications that become feasible with compute resources co-located with low latency 5G radios: from smart parking to anomaly recognition to enhanced entertainment. Communities will become safer and more enjoyable.



ADLINK Edge & AI Server installed in Charles **NEMA 4X (IP65)** Enclosure



Outdoor 5G Small Cell Computing Node

## Features and Benefits

### GR-487 and NEMA 4X (IP65) ratings

Assures equipment protection in all outdoor environments and conditions including wind, rain, fire, and seismic events.

### Advanced thermal design

Solar shields and advanced venting, along with heat exchangers or air conditioners, protect equipment against the environment.

### Monitoring solutions

Charles monitoring solution provides status and alarms of temperature, humidity, pressure, and door intrusion.

### Quick and easy deployment

Shipped to site all together, ready to deploy and easily installed onto a Charles Composite Pad (CPAD) or standard concrete pad.

### Customized options available

Charles can provide specific configurations and footprints that more exactly meet customer needs.

### Equipment integration

Equipment integration can be done by Charles or third parties and shipped to site intact.

## Specifications

### Charles Industries SC1021NMN1 Enclosure

- GR-487, NEMA 4X compliant
- 36”H x 24”W x 14”D
- 0.125 inch Al welded construction
- Off-white color
- -40°C to +46°C ambient
- -5°C to +55°C internal operating temp.
- 1880W heat exchanger
- 250W heater
- -40°C to +46°C Cooling
- 3-point latching with pad-lockable door
- Door and temperature alarms
- Pole or wall mountable



### ADLINK Technology MECS-7210 Edge Server

- 2 Intel® Xeon® Scalable Processors
- 16x DDR4 2133/2400/2666 ECC memory
- 3.5”H x 17.2”W x 16.5”D (2U 19 inch rack mount)
- -5°C to +55°C operating temperature
- 1200W max. power AC or DC
- Front access
  - 2x RJ45 10/100/1000BASE-T
  - 4x 10G SFP+
  - 1x VGA
  - 1x RJ45 serial
  - 2x USB 3.0
- Expansion
  - 2x PCIe x16 and 1x PCIe x8 (single slot FHFL)
  - 2x PCIe x16 (dual slot FHFL)





## About ADLINK

ADLINK Technology is a global leader in Edge Computing. We provide robust boards, platforms and user interfaces; real-time data connectivity solutions; and application enablement for state-of-the-art industrial computing (e.g., AI-at-the-Edge). Together, these also enable innovative end-to-end IoT solutions in support of operational excellence or new revenue streams. ADLINK serves customers in many vertical markets and has an excellent eco-system of technology partners. ADLINK is a valued thought-leader and contributor to many standards and interoperability initiatives, with products available in more than 40 countries.

For more information, please visit

[https://www.adlinktech.com/en/Edge\\_and\\_AI\\_Server\\_Products.aspx](https://www.adlinktech.com/en/Edge_and_AI_Server_Products.aspx)



## About Charles Industries

2019 marks the Charles Industries' 51st year as a privately held, diversified manufacturing and technology company serving telecommunications, wireless, broadband cable, utility, marine, and industrial markets. Founded in 1968, the company is ISO 9001:2008 and TL9000 registered and headquartered in Schaumburg, Illinois with five additional US-based manufacturing centers.

For further information, please visit

[www.charlesindustries.com](http://www.charlesindustries.com)

or call 1-847-806-6300.

## WORLDWIDE OFFICES

### ADLINK Technology, Inc.

9F, No.166 Jian Yi Road, Zhonghe District  
New Taipei City 235, Taiwan  
新北市中和區建一路166號9樓  
Tel: +886-2-8226-5877  
Fax: +886-2-8226-5717  
Email: service@adlinktech.com

### Ampro ADLINK Technology, Inc.

5215 Hellyer Avenue, #110 San Jose, CA 95138, USA  
Tel: +1-408-360-0200  
Toll Free: +1-800-966-5200 (USA only)  
Fax: +1-408-360-0222  
Email: info@adlinktech.com

### ADLINK Technology Singapore Pte. Ltd.

84 Genting Lane #07-02A, Axxel Innovation Centre,  
Singapore 349584  
Tel: +65-6844-2261  
Fax: +65-6844-2263  
Email: singapore@adlinktech.com

### ADLINK Technology Singapore Pte Ltd. (Indian Liaison Office)

#50-56, First Floor, Spearhead Towers  
Margosa Main Road (between 16th/17th Cross)  
Malleswaram, Bangalore - 560 055, India  
Tel: +91-80-65605817, +91-80-42246107  
Fax: +91-80-23464606  
Email: india@adlinktech.com

### ADLINK Technology Japan Corporation

〒101-0045 東京都千代田区神田鍛冶町3-7-4  
ユニゾ神田鍛冶町三丁目ビル4F  
Unizo Kanda Kaji-cho 3 Chome Bldg. 4F,  
3-7-4 Kanda Kajicho, Chiyoda-ku, Tokyo 101-0045, Japan  
Tel: +81-3-4455-3722  
Fax: +81-3-5209-6013  
Email: japan@adlinktech.com

### ADLINK Technology, Inc. (Korean Liaison Office)

경기도 용인시 수지구 신수로 767 A동 1008호  
(동천동, 분당수지유타워) (우) 16827  
A-1008, U-TOWER, 767 Sinsu-ro, Suji-gu,  
Yongin-si, Gyeonggi-do, Republic of Korea, 16827  
Toll Free: +82-80-800-0585  
Tel: +82-31-786-0585  
Fax: +82-31-786-0583  
Email: korea@adlinktech.com

### ADLINK Technology, Inc. (Israel Liaison Office)

SPACES OXYGEN, 62 Medinat, Ha-yehudim st  
4673300, Herzliya, Israel, P.O.Box - 12960  
Tel: +972-54-632-5251  
Fax: +972-77-208-0230  
Email: israel@adlinktech.com

### ADLINK Technology (China) Co., Ltd.

上海市浦东新区张江高科技园区芳春路300号 (201203)  
300 Fang Chun Rd., Zhangjiang Hi-Tech Park  
Pudong New Area, Shanghai, 201203 China  
Tel: +86-21-5132-8988  
Fax: +86-21-5192-3588  
Email: market@adlinktech.com

### ADLINK Technology Beijing

北京市海淀区上地东路1号盈创动力大厦E座801室(100085)  
Rm. 801, Power Creative E, No. 1 Shang Di East Rd.  
Beijing, 100085 China  
Tel: +86-10-5885-8666  
Fax: +86-10-5885-8626  
Email: market@adlinktech.com

### ADLINK Technology Shenzhen

深圳市南山区科技园南区高新南七道数字技术园  
A1栋2楼C区 (518057)  
2F, C Block, Bldg. A1, Cyber-Tech Zone, Gao Xin Ave. Sec. 7  
High-Tech Industrial Park S., Shenzhen, 518054 China  
Tel: +86-755-2643-4858  
Fax: +86-755-2664-6353  
Email: market@adlinktech.com

### ADLINK Technology GmbH

Hans-Thoma-Straße 11  
D-68163 Mannheim, Germany  
Tel: +49 621 43214-0  
Fax: +49 621 43214-30  
Email: germany@adlinktech.com

Ulrichsbergerstraße 17  
D-94469 Deggendorf, Germany  
Tel: +49 991 290 94-10  
Fax: +49 991 290 94-29  
Email: germany@adlinktech.com

### ADLINK Technology, Inc. (French Liaison Office)

6 allée de Londres, Immeuble Ceylan 91940  
Les Ulis, France  
Tel: +33 (0) 1 60 12 35 66  
Fax: +33 (0) 1 60 12 35 66  
Email: france@adlinktech.com

### ADLINK Technology, Inc. (UK Liaison Office)

First Floor West Exeter House,  
Chichester fields Business Park Tangmere,  
West Sussex, PO20 2FU, United Kingdom  
Tel: +44-1243-859677  
Email: uk@adlinktech.com



All products and company names listed are trademarks or trade names of their respective companies.  
All specifications are subject to change without further notice.



Singel 3 | B-2550 Kontich | Belgium | Tel. +32 (0)3 458 30 33 | info@alcom.be | www.alcom.be

Rivium 1e straat 52 | 2909 LE Capelle aan den IJssel | The Netherlands | Tel. +31 (0)10 288 25 00 | info@alcom.nl | www.alcom.nl