

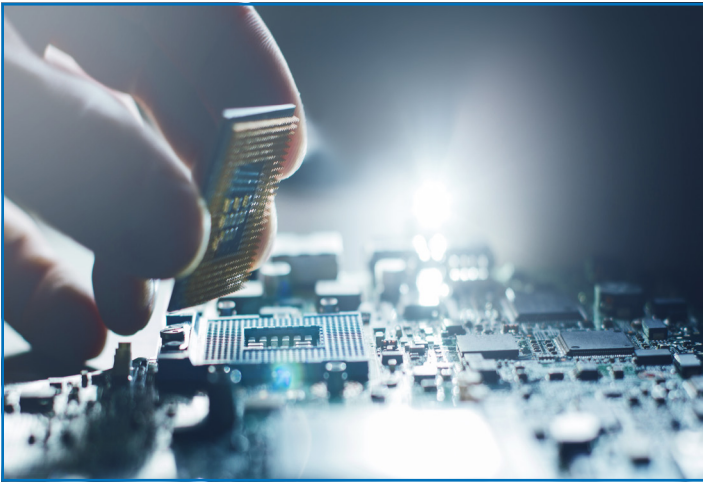


*Electronic Component Solutions*

The most innovative components for  
the embedded design engineer



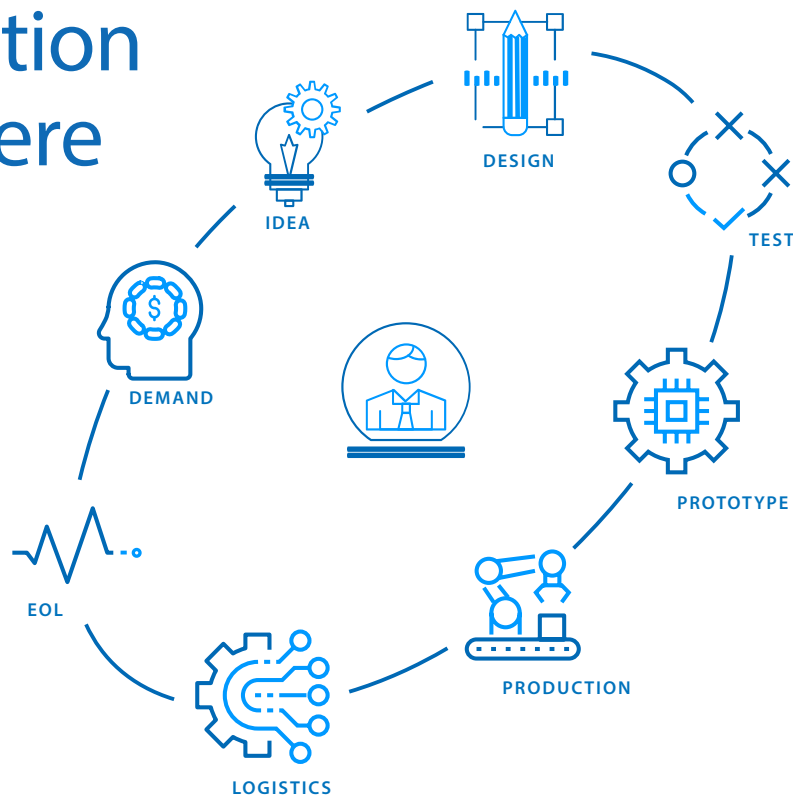
# Electronic Component Solutions & Alcom



## Empowering the Embedded Hardware Design Community

Alcom Electronics unites a diverse range of product competencies and complementary technologies tailored to meet the needs of the Embedded Hardware Design Community. We supply the essential components and building blocks for the next wave of design concepts. Our team, comprised of skilled Technical Sales People, Field Application Engineers, and a dedicated Inside Sales and Customer Service Team, is committed to providing first-class logistics support, empowering your vision from inception to realization.

## Co-creation starts here



*Alcom considers everybody an indispensable added value in the collaborative chain with all of its partners.*



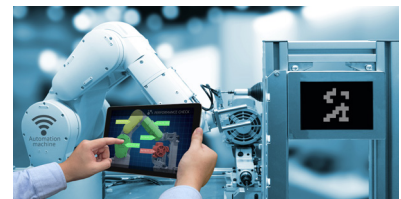
# Applications & Markets



A/V BROADCAST



AVIONICS & SATELLITE



FACTORY & INDUSTRIAL  
AUTOMATION, ROBOTICS



ENERGY & UTILITIES



E-MOBILITY



HOME & BUILDING AUTOMATION



IIOT & INDUSTRY 4.0

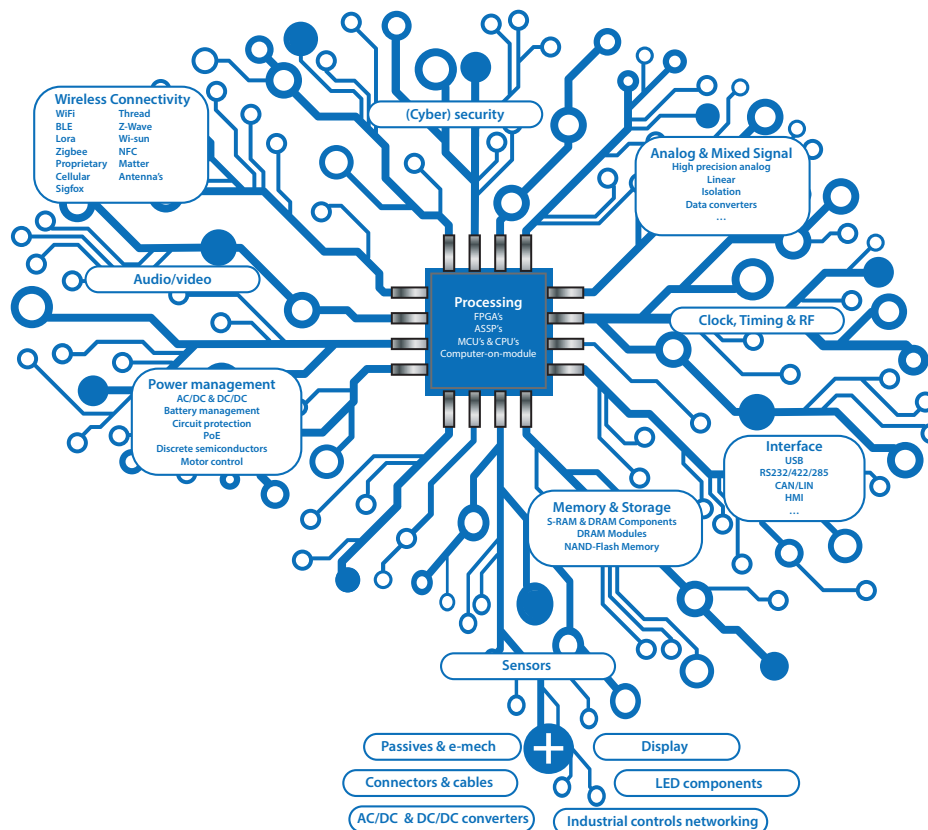


MEDICAL, HEALTHCARE & FITNESS

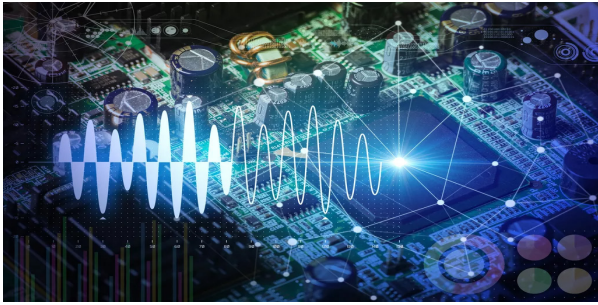


TRAFFIC & TRANSPORTATION

# Component solutions... and more



# Product overview



## Analog, mixed signal & sensor ICs

- ADC/DAC-Isolated ADCs, mixed signal, precision analog & interface
- Linear & Amplifiers; Isolated Amplifiers
- Analog signal processors
- Analog & digital isolators
- Isolated standard and smart Drivers
- Magnetoresistance based products including sensors, isolator and power
- Intelligent sensors-biometric, humidity, magnetic, optical, proximity, light, temperature, thermocouple, position, pressure, current, angular position, vibration & accelerometers
- Image & TOF sensors

## Audio, video, multimedia

- Music & voice, audio, video, broadcasting ICs
- Connectivity solutions for long-reach, high resolution video driving HDBaseT and MIPI A-PHY standards.
- Audio SOCs; ISD Chiporders for voice, audio recording and playback
- Audio CODECs; ADCs; DACs; Voiceband CODECs
- Audio amplifiers; audio & speech controllers
- Miniature & Vehicle speakers

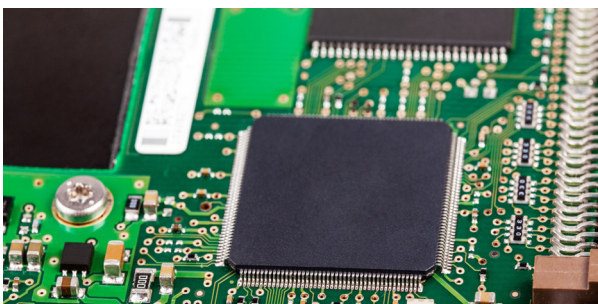
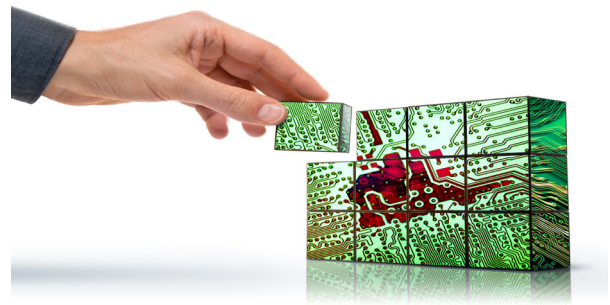


## Active circuit protection

- Overvoltage & Protection ICs, USB data line protection ICs, EMI/ESD Suppression
- TVS arrays, Steering Diodes, Thyristor Surge suppressors, TVS Diode Arrays
- Polysurg ESD suppressors, Varistors-MLV/MOV/MOVTP/MOVGT, Automotive rated products

## Interface & Network ICs

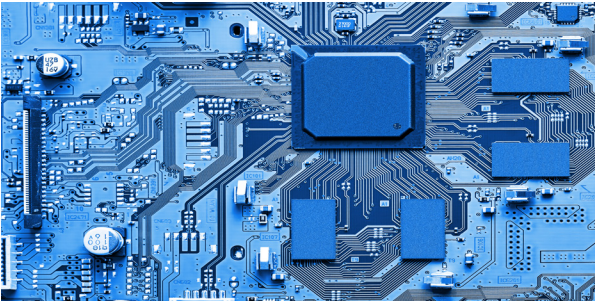
- USB host & bridging solutions;
- USB development modules & cable solutions
- Embedded Ethernet, EtherCAT, MotionNet
- ISDN line interfaces, network controllers
- PCIe
- RS-232/RS-422/RS-485/LVDS/I2C/Profibus/CAN/LIN ICs
- Isolated Interface ; ISO-RS485/RS422; CAN; I2C; DI/DO
- Digital isolators
- I/O expansion ICs
- LCD controllers & drivers, HMI display ICs, Embedded video engines
- Display power LED/RGB LED/LED Backlight Drivers & LCD Bias Supply
- Touch, proximity & gesture
- RFID/NFC



## Microcontroller, microprocessors

- Microcontrollers & Microprocessors 4-32 bit; Proprietary and ARM Cortex Cores; RISC-V; DSP's
- Interface, peripheral & connectivity MCU's
- MCU/MPU Starter kits, development boards & tools
- IoT Silicon, software and tools for protocols incl Bluetooth, Wi-Fi, Wi-Sun, Zigbee, Z-Wave, Thread, Matter, Amazon Sidewalk and proprietary.
- Identity provisioning for secure IoT infrastructures
- Secure elements, smart card products and open ARM platforms for security applications
- Managed PKI to secure IoT devices

# Semiconductors

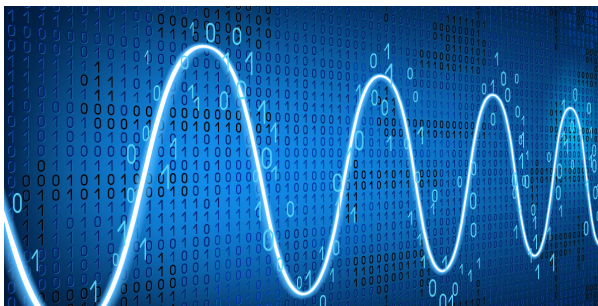


## Memory ICs & modules

- Parallel NOR and NAND Flash/SPI NOR and NAND Flash, I<sup>2</sup>C Eeprom, DDR Dram & Sync Dram, LP SRAM, OTP memories
- DRAM Modules SDRAM, DDR1/2/3/4/5
- NAND Flash Modules eMMC, PATA/CF, SATA, SD, microSD, USB

## Programmable logic, ASIC, ASSP

- Small & medium density FPGA's , Arora (V) Sram & Littlebee Flash based FPGA's
- Bridge ASSP between USB & SPI, JTAG, I<sup>2</sup>C, GPIO and UART
- ASIC solutions-gate arrays, embedded arrays, standard cells
- Starter kits and development tools
- EDA integrated design tools from design entry to verification

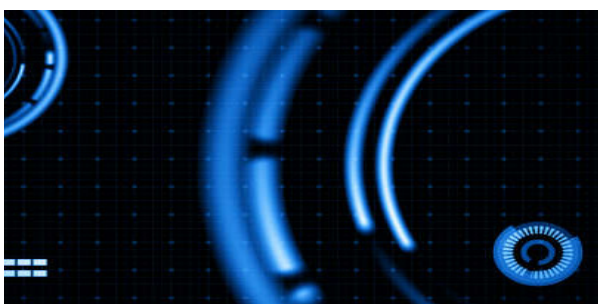


## Timing & frequency control

- kHz, & MHz SMD/THT Quartz Crystals
- Quartz Crystal oscillators uPower/ultra low power/programmable
- MEMS timing-oscillator, clock and resonator products
- Real time clock modules
- Jitter Cleaners/Network Synchronizers
- Clock buffers, clock generators
- VCXO, VCTCXO, SPXO, LPXO, TCXO, OCXO
- Spread spectrum, high temperature, automotive oscillators
- Ceramic resonators, SAW resonators products & Filters
- 1U/3U rack mounting & DIN-rail high precision time servers

## Motion/motor control

- DC Motor drivers, stepper motor and lens motor drivers; non-isolated Gate Drivers
- Motor Drivers & Controllers; 3 phase BLDC Motor controllers
- Smart motor modules
- Robot and motor drive technology including e-mobility

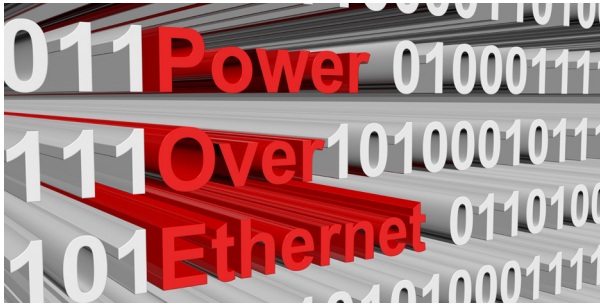


## Power management ICs

- AC/DC & DC/DC power management
- PMIC, LDO, supervisory, reset & battery monitoring management,
- Single & multiple output power modules with integrated inductor
- Moulded inductors supporting power management ICs
- USB, Load & Analog switches, e-fuses
- High & Low voltage switches
- MOSFET drivers, Power switches & modules
- Wireless charging components and modules
- Isolated DC/DC Converters & Modules

# Semiconductors

---



## PoE power management modules

- PoE PD & PSE ICs & integrated modules
- High power PoE transformers
- PoE systems including injectors/midspan and switches

## Power semiconductors, discretes & modules

- Diodes, rectifiers, power MOSFET & JFETs, thyristors
- Power modules with integrated inductors
- Gate Driver Modules for SiC/IGBT
- IGBT/Mosfet/IPM/FRD/Rectifier Modules & SiC Mosfet Modules
- Automotive IGBT & SiC Modules
- Wireless power modules



## Light & optical sensors

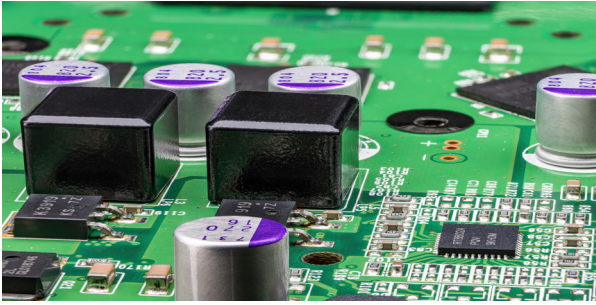
- Silicon, InGaAs & GaAs photodiodes
- Laser Diodes-Detectors, Emitters, High Power Pulsed, InGAAs APD/PIN modules & modules
- Light sensing (customized) solutions

“

*Components selection is one of the most crucial and challenging aspects of the electronic system design*



# Passives, emech, connectors & cooling



## Capacitors & resistors

- Tantalum, Chip Ceramic & MLCC, film,
- Polymer-Radial-SMD-Aluminum Electrolytic
- Double layer supercapacitors & supercapacitor modules
- Resistors & thermistors

## Circuit protection

- Overvoltage & Protection ICs, EMI/ESD Suppression
- TVS arrays, Steering Diodes, Thyristor Surge suppressors
- Polysurg ESD suppressors, Varistors-MLV/MOV/MOVTP/MOVGT, Automotive rated products
- Fuses, efuses, PTC, thermofuses, fuse-holders/blocks/clips
- Thermal circuit breakers and accessories; voltage selectors
- Multi-discrete modules & power modules



## Magnetics, inductors & transformers

- Chip/surface mount/DIP, high power inductors & ferrite beads
- Common-mode & differential mode chokes, magnetic cores, bobbins
- RF & Signal Inductors
- Ethernet magnetics & connector modules
- Low & high frequency transformers, signal transformers
- Battery Management system magnetics
- Automotive magnetics
- Gate drive/current sensors/planar transformers
- Space, MIL and high-rel magnetics
- EMI & RFI Filters

## Connectors

- PCB-board to board, headers & sockets, wire to board, IC sockets, plugs & jacks
- PCB card-mPCIe, M.2, mPCI, MXM, SO DIMM, SIM Card, COMe, cPCI,
- PC/104, USB series, Card Edge
- Pogo pins, battery connectors, Spring Clips,
- PCB terminals, Euro Type and American Terminal blocks
- D-Sub filtered & mixed combi D, hoods & accessories
- I/O; sealed I/O, circular M5/M8/M12/M23, magnetic waterproof
- RF-Cable Mount/On-Board & Receptacles/Adapters/Contact clips
- DIN41612, highspeed backplane, VPX, VME-bus, advanced TCA
- High Speed Transmission Connectors
- Power entry modules without filter, IEC power distribution units
- Automotive & machine vision/camera link/optical connectors
- Modular and Din-rail mounted terminal blocks



# Passives, emech, connectors & cooling



## Cable assemblies & cords

- Inlet/outlet/cord connectors & cord sets
- Cable assemblies-RF, circular, USB, ethernet, SATA, HDMI, board to wire, LVDS,...
- USB cable assemblies-USB RS232/RS 422/RS 485/TTL cable series
- Custom cable assemblies
- Network Cables RJ45 Cat 5e/Cat6/Cat 6A
- LED Connectors Cable Assembly
- Coaxial cable assemblies
- Machine vision and camera link cables
- High speed transmission cable assemblies
- Specialized vehicle harnesses

## Thermal management

- Thermal Pads/Pastes/GreasesTapes/Gap fillers
- Insulator materials
- Axial/blower DC, AC and EC Fans, Blowers and accessories
- DC chip coolers
- Thermal modules, Heatsinks and liquid cool products



## All-in-one mechanical solutions

- Complete HMI solutions including display, electronics and housing
- Sub assemblies & multi process assemblies
- One-stop assemblies of multiple parts mechanical & electronics
- Aluminium extrusion-plastic injection-precision machining-die casting-metal stamping-die cutting-surface treatment-busbars-cold plates-emi



*Specialism, Knowledge & Design-in Expertise*



# Innovation & technology partners

## Alcom Electronics: A Tradition of Innovation and Partnership

Since its inception in 1980, Alcom Electronics has been dedicated to advancing the field of electronic component distribution and representation. Recognized as market experts, we serve our customer base—from evaluation to production—with product solutions that integrate seamlessly into a wide range of industrial electronics applications. Our sales team is passionate about their role in our shared success and engages with customers and supplier-partners through brain-friendly communication. We operate as the regional extension of our manufacturers, as the Authorized and Certified/Specialist Distributor and Representative.

In the face of current market disruptions due to geopolitical tensions, which may affect development, technological innovation, and the supply chain of electronic components, Alcom Electronics has proactively developed trustworthy relationships with additional suppliers at the forefront of innovation. These suppliers hail from the USA, Taiwan, China, Korea, Japan, and Europe, with some expanding their operations to new factories and development centers in Vietnam, India, and Malaysia, among others.

Alcom offers competitive pricing, exceptional local design-in services, after-sales support, fulfillment, and efficient worldwide supply chain management with global shipping services. Alcom electronics connects your ideas with innovation, technology and added value.

- Analog, mixed signal & sensor
- Timing & frequency control
- Circuit protection
- Audio, video, multimedia
- Motion/motor control
- Magnetics, inductors & transformers
- Active circuit protection
- Power management ICs
- Connectors
- Interface & Network ICs
- PoE power management
- Cable assemblies & cords
- Microcontroller, microprocessors
- Power semi, discretes & modules
- Thermal management
- Memory ICs & modules
- Light & optical sensors
- All-in-one mechanical solutions
- Programmable logic, ASIC, ASSP
- Capacitors & resistors

## Contact us today

We support our customers with specialism, knowledge and design-in expertise from the ground up. Let's discuss your next big idea.

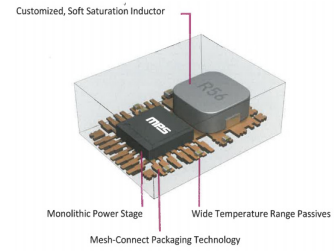
## KEY PARTNERS

# New product releases

## POWER MODULE FAMILY FOR A WIDE RANGE OF FPGA'S

MPS's power modules have a wide VIN and IOU range with a variety of packages. Our extensive portfolio of DC/DC modules integrate inductors, FETs, compensation, and other passive components into a single package to simplify the design process. Choose what module works best for your design based on our beneficial features.



## NEW XG26 FAMILY OF WIRELESS SOCS AND MCUS

The new xG26 family consists of the multiprotocol MG26 SoC, the Bluetooth LE BG26 SoC, and the PG26 MCU. All three are designed to future-proof the IoT against some of the most demanding emerging applications, like Matter, with double the Flash and RAM of other Silicon Labs multiprotocol devices.

## RAM-BASED FPGA'S IN LOGIC DENSITIES FROM 10K TO 55K LUTS

GOWIN Semiconductor Arora II GW2A series of RAM-based FPGA are available in logic densities from 10K to 55K LUTs in a wide range of package options that include extended on-chip memory and non-volatile Flash Programming plus User Flash.



## CORTEX®-M33 CORE MICROCONTROLLERS FOR HIGH-PERFORMANCE APPLICATIONS

The GD32F5 series high-performance MCUs offer significantly expanded storage space, excellent processing efficiency, and a wide array of interface options. Compliant with the system-level IEC61508 SIL2 functional safety standard, they provide a comprehensive software and hardware security solution to meet the industrial market's demands for high reliability and security applications. Currently, samples of this series are available, and mass production is scheduled to begin in May.

## 1-PHASE HIGH CURRENT CHOKE IN VERTICAL DESIGN

Schurter includes a series for 1-phase high-current applications to its range of current-compensated chokes for printed circuit board mounting. Due to the vertical design, the new DKIV-1 series requires a significantly smaller footprint. The chokes are available with a ferrite or nanocrystalline core for rated currents from 10 A to 50 A. The open design makes the chokes particularly compact and lightweight.



## CONNECTORS FOR THE FUTURE

The keyword for board-to-board connectors is networking – all systems and devices will be interconnected in the future. Associated electronic assemblies face challenges, but also opportunities, on how to solve an innovative connection solution to realize the networked world of tomorrow. ept is aware of the increasing complexity of devices and increasing miniaturization – with a clear focus on connector trends.

# Alcom product portfolio

ELECTRONIC COMPONENT SOLUTIONS	WIRELESS EMBEDDED CONNECTIVITY & SENSORS	WIRELESS & INDUSTRIAL CONTROLS NETWORKING	DISPLAY & TOUCH
LED & SOLID STATE LIGHTING	POWER & EMC	RUGGED MOBILE COMPUTING	EMBEDDED SYSTEMS, AI & EDGE COMPUTING

<ul style="list-style-type: none"> <li>• Semiconductors</li> <li>• Frequency &amp; timing</li> <li>• Power management</li> <li>• Circuit protection &amp; discretes</li> <li>• Magnetics</li> <li>• Passives &amp; electromechanical</li> <li>• Connectors &amp; cable assemblies</li> <li>• Photonics</li> </ul>	<ul style="list-style-type: none"> <li>• Wireless modules</li> <li>• Antenna's</li> <li>• Sensors</li> </ul>
<ul style="list-style-type: none"> <li>• Routers &amp; gateways</li> <li>• Wireless embedded computers</li> <li>• Industrial ethernet and IP variations</li> <li>• Wired &amp; wireless machine networking</li> <li>• Antenna's</li> <li>• Device to cloud solutions</li> <li>• Connectivity &amp; remote management services</li> <li>• Networking &amp; connectivity</li> </ul>	<ul style="list-style-type: none"> <li>• Displays</li> <li>• Touch screens</li> <li>• Optical bonding</li> <li>• Total display solutions</li> </ul>
<ul style="list-style-type: none"> <li>• LED light sources</li> <li>• Optics</li> <li>• Thermal management</li> <li>• Power &amp; intelligent controls</li> <li>• LED modules</li> </ul>	<ul style="list-style-type: none"> <li>• AC/DC power supplies</li> <li>• DC/DC converters</li> <li>• Power management modules</li> <li>• Wireless charging</li> <li>• E-mobility solutions</li> <li>• Transformers &amp; power inductors</li> <li>• UPS</li> <li>• EMC filters</li> </ul>
<ul style="list-style-type: none"> <li>• Tablets</li> <li>• PDA's</li> <li>• Vehicle mount computers</li> <li>• Accessories</li> </ul>	<ul style="list-style-type: none"> <li>• Computer-on-modules</li> <li>• Embedded boards</li> <li>• Industrial PC &amp; automation</li> <li>• System integration</li> </ul>

*Bridging the gap between technology, people and business with a human interface.*





#### ALCOM BELGIUM

Alcom electronics nv/sa  
Singel 3  
2550 Kontich  
Tel: +32 (0)3 458 30 33  
Fax: +32 (0)3 458 31 26  
Email: [info@alcom.be](mailto:info@alcom.be)  
[www.alcom.be](http://www.alcom.be)

#### ALCOM THE NETHERLANDS

Alcom Electronics B.V.  
Rivium 1e straat 52  
2909 LE Capelle a/d IJssel  
Tel: +31 (0)10 288 25 00  
Fax: +31 (0)10 288 25 25  
Email: [info@alcom.nl](mailto:info@alcom.nl)  
[www.alcom.nl](http://www.alcom.nl)

## Get to know us

ALCOM PROVIDES THE WORLD'S MOST ADVANCED TECHNOLOGIES.

With a team of like-minded entrepreneurs, Alcom will continue to inspire its valued customers to use advanced innovative building blocks in vertical markets. The importance of providing high-level services and a human interface based on specialism, knowledge and design-in expertise will remain key differentiators.

Alcom is positioned for growth. We invite all our customers to discuss their current and future concepts and designs. Let's connect, work and grow together.

