



Display & Touch

Products and solutions offering the best visual interface for industrial applications



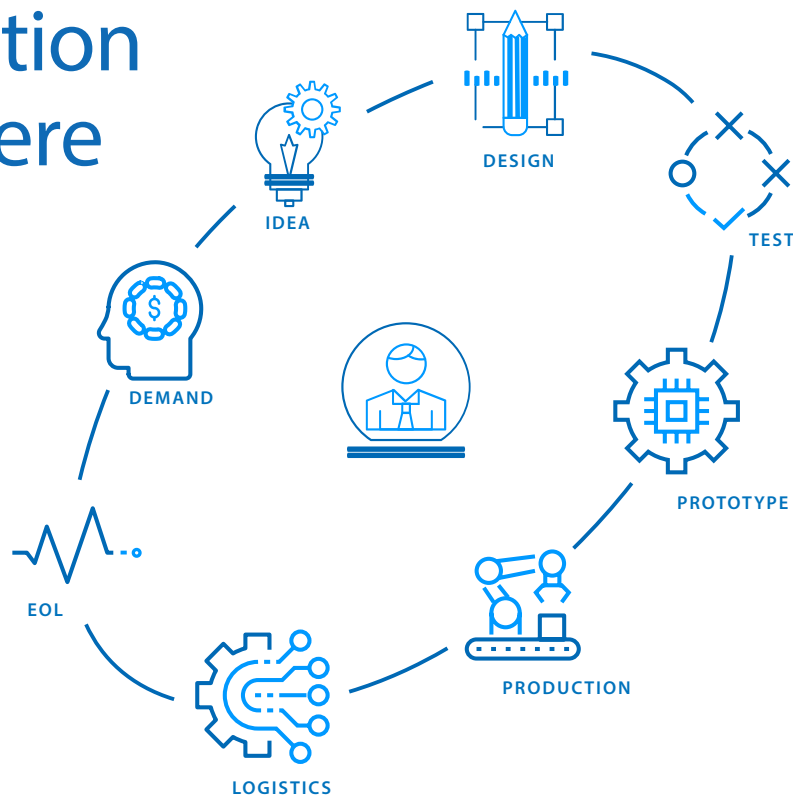
Display & Touch & Alcom



We are passionate about the best display system solutions that our customers can design into their products

With over 30 years as a leading supplier in the display and touch industry, we offer high-quality display, touch, and HMI solutions at competitive prices. Our exceptional pre-sales and after-sales support ensures long-term customer satisfaction. We understand the complexities of selecting the right technology for diverse applications. Our team guides you through the entire process, from concept to production, providing expert assistance and a personal touch. Contact Alcom Electronics today to leverage our expertise and experience for your next design project.

Co-creation starts here



Alcom considers everybody an indispensable added value in the collaborative chain with all of its partners.



Applications & Markets



AMUSEMENT



MEDICAL



RETAIL



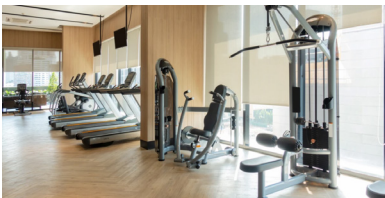
INDUSTRIAL



E-MOBILITY



TRANSPORTATION



FITNESS



CONSUMER



FINGERPRINT SENSOR

Solutions for specific vertical markets



Coating Glass



High thermal stability



Anti-Vibration



Anti-Bacterial



Anti-Corrosion



Anti-Shattering



Anti-Shock



Vandalproof



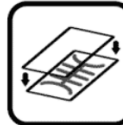
IP Grade



CERTIFIED



EMC Proof



Optical Bond



UV Resistive



Longevity



Waterproof touch



Sunlight readable



High Brightness



Gloves touch

Our values



Service



Innovation



Flexibility



Partner



Vertical



Integration

Product overview

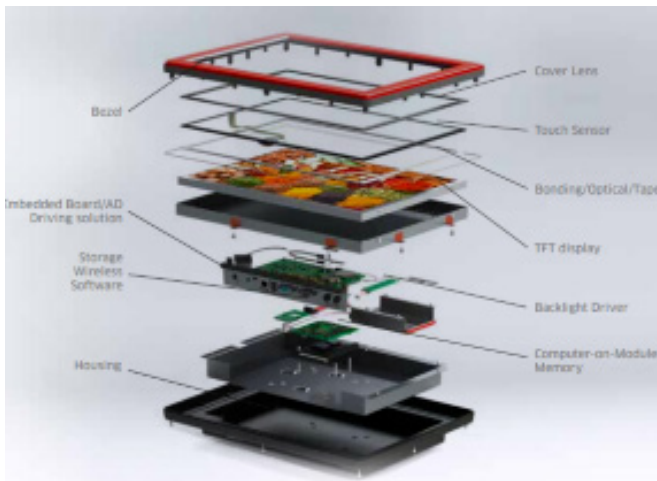


e-Paper - OLED - VFD - LCM

- Standard & customized monochrome character/graphic LCD displays
- Intelligent displays with RS-232, SPI and I²C
- VFD displays and modules
- OLED graphic and character display modules
- Mono and color ePaper displays up to 42"
- Controller boards and embedded system solutions for public displays and healthcare

Input systems

- Complete HMI solutions incl input system, display, electronics and housing
- Standard and customized front panels & touch solutions
- PCAP, resistive, IR, SAW touchscreens
- EMI shield windows for TFT modules
- Open frame monitors
- Capacitive switches
- Membrane switches

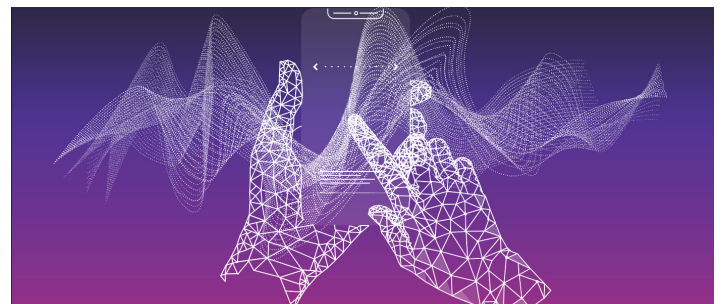


TFT-LCD displays

- Standard & modified or enhanced TFT Mono & color displays
- Small, medium, large industrial & public information displays
- Curved/outdoor/stretched bar/square and round displays
- High brightness, high resolution, wide view & wide temperature displays
- Sunlight readable displays
- Smart interactive displays
- Automotive, In-vehicle, Medical, Marine displays
- GUI Design Tool supported PCAP TFT Modules
- Display driving boards, cables, accessories and value-add panel integration
- Customized display kits & complete solutions
- IC display controllers

Touchscreen technologies

- Resistive/P-cap/infrared and SAW touch
- Optical bonding and assembly of display and touchscreen
- Touch screen controllers
- Capacitive touch switches, sliders and/or wheels
- Custom-configured display & touch integration
- Customized cover glass



Total Touch solutions

- Aqua-proof & outdoor PCAP touch
- Optical Bonding Technology
- 3 in 1 PCAP Touch solutions
- Resistive Multi touch
- Open frame touch monitors
- Coating Solutions

Innovation & technology partners

Alcom Electronics: Leading the Way in Innovative Display Technologies

At Alcom Electronics, we are at the forefront of providing **cutting-edge display, touchscreen, and HMI solutions**. We supply a complimentary range of products, including ICs, AD boards, touch monitors, ePaper, and open frame displays, catering to the diverse needs of our clients. Our premium touch display solutions are designed to meet the demands of the digital age, integrated seamlessly into various applications. Our commitment to offering one-stop shopping services and end-to-end support has fueled our consistent growth and solidified our partnerships with customers and suppliers.

Our success is built on our ability to deliver competitive pricing, **top-quality products**, on-time deliveries, and **exceptional technical support**. We specialize in **optical bonding** and **assembly**, enhancing the performance and durability of our display solutions. Our expertise extends across multiple sectors including digital signage, telecommunications, high-end consumer electronics, home appliances, automotive, e-mobility, agriculture, medical and healthcare, industrial automation, smart home, transportation, retail, gaming and entertainment, marine, military, and avionics.

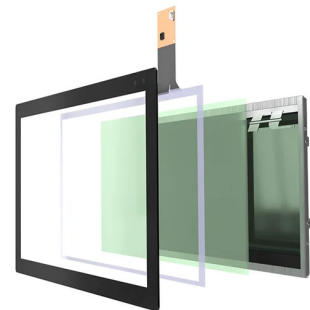
We pride ourselves on **co-creating customized touch display** solutions. A pool of skilled hardware, software and mechanical engineers form a strong team collaborating closely with our Manufacturer-certified Technical Sales & Application team to fully understand and meet our customers' needs. Alcom Electronics is recognized as one of the most advanced partners in the industry. We are **THE Regional Specialist for Display Solutions**, ready to serve as your best partner for display and system-integrated solutions. At Alcom, we connect your ideas with **innovation, technology, and added value**.

Contact us today

We support our customers with specialism, knowledge and design-in expertise from the ground up. Let's discuss your next big idea.

Alcom electronics' expertise:

- **Industrial Displays**
- **Touchscreen Technologies**
- **System Integrated Solutions**
- **Added Value Services**
- **One-Stop Shopping with Unmatched Local Support**



KEY PARTNERS

New product releases

RUGGED DISPLAYS SUITED FOR OUTDOOR USE

Data Image is driving TFT solutions beyond the standard TFT display module supplier offerings with a strong commitment towards Rugged displays for outdoor use. Alcom electronics offers data Image's comprehensive solutions to meet the specific needs of industries such as Industrial, Vehicle, Marine, and Medical, ensuring top solutions for each category.



ROUND & CIRCULAR TFT DISPLAYS

We're here to help and find solutions to solve your problems if you are facing issues about sunlight, UV exposure, reflection problem and tough weather

TIANMA HIGH QUALITY DISPLAYS NOW OFFICIALLY DISTRIBUTED IN BENELUX BY ALCOM ELECTRONICS

Alcom electronics is proud to distribute Tianma as part of Steliau International's expansion plan and become one of Tianma's preferred Sales Channel Partners in Europe. Tianma offers high quality displays to customers in multiple markets with strong focus on automotive, medical and industrial products.



5.7\"/>

Innolux's superb technological capabilities are showcased in its industrial display panels. Its industrial display panels feature extended temperature, high brightness and reliability, catering to specific application requirements in various sectors such as industry, retail, leisure and entertainment, rail transportation, and shipping.

EPAPER DISPLAY MODULE WITH OPTICAL SPECTRUM BONDING

Epaper technology has come a long way monochrome to color, and is now expanding into various vertical applications where low power consumption is crucial. With its ability to mimic the appearance of ordinary ink on paper, Epaper is an ideal solution for those who prioritize energy efficiency over fast refresh rates. In-House Full Automated Optical Bonding Process for all type of Display to create cutting-edge displays that provide a seamless experience for users.



FLEX TOUCH CONSOLE SERIES AS THE NEW COST-EFFECTIVE HMI SOLUTION

The FTC Series combine a robust IDE, Python support, and extensive connectivity options to streamline your HMI projects. Whether you're in healthcare, automotive, smart home, factory automation, or industrial equipment, our solution empowers you to innovate and excel with cost-effectiveness and quick time-to-market.

Alcom product portfolio

ELECTRONIC COMPONENT SOLUTIONS	WIRELESS EMBEDDED CONNECTIVITY & SENSORS	WIRELESS & INDUSTRIAL CONTROLS NETWORKING	DISPLAY & TOUCH
LED & SOLID STATE LIGHTING	POWER & EMC	RUGGED MOBILE COMPUTING	EMBEDDED SYSTEMS, AI & EDGE COMPUTING

<ul style="list-style-type: none"> • Semiconductors • Frequency & timing • Power management • Circuit protection & discretes • Magnetics • Passives & electromechanical • Connectors & cable assemblies • Photonics 	<ul style="list-style-type: none"> • Wireless modules • Antenna's • Sensors
<ul style="list-style-type: none"> • Routers & gateways • Wireless embedded computers • Industrial ethernet and IP variations • Wired & wireless machine networking • Antenna's • Device to cloud solutions • Connectivity & remote management services • Networking & connectivity 	<ul style="list-style-type: none"> • Displays • Touch screens • Optical bonding • Total display solutions
<ul style="list-style-type: none"> • LED light sources • Optics • Thermal management • Power & intelligent controls • LED modules 	<ul style="list-style-type: none"> • AC/DC power supplies • DC/DC converters • Power management modules • Wireless charging • E-mobility solutions • Transformers & power inductors • UPS • EMC filters
<ul style="list-style-type: none"> • Tablets • PDA's • Vehicle mount computers • Accessories 	<ul style="list-style-type: none"> • Computer-on-modules • Embedded boards • Industrial PC & automation • System integration

Bridging the gap between technology, people and business with a human interface.





ALCOM BELGIUM

Alcom electronics nv/sa
Singel 3
2550 Kontich
Tel: +32 (0)3 458 30 33
Fax: +32 (0)3 458 31 26
Email: info@alcom.be
www.alcom.be

ALCOM THE NETHERLANDS

Alcom Electronics B.V.
Rivium 1e straat 52
2909 LE Capelle a/d IJssel
Tel: +31 (0)10 288 25 00
Fax: +31 (0)10 288 25 25
Email: info@alcom.nl
www.alcom.nl

Get to know us

ALCOM PROVIDES THE WORLD'S MOST ADVANCED TECHNOLOGIES.

With a team of like-minded entrepreneurs, Alcom will continue to inspire its valued customers to use advanced innovative building blocks in vertical markets. The importance of providing high-level services and a human interface based on specialism, knowledge and design-in expertise will remain key differentiators.

Alcom is positioned for growth. We invite all our customers to discuss their current and future concepts and designs. Let's connect, work and grow together.

