

ELECTRONIC COMPONENT SOLUTIONS

WIRELESS EMBEDDED CONNECTIVITY & SENSORS

BOXED WIRELESS & INDUSTRIAL CONTROLS NETWORKING

DISPLAY & TOUCH

LED & SOLID STATE LIGHTING

POWER & EMC

RUGGED MOBILE COMPUTING

EMBEDDED SYSTEMS, AI & EDGE COMPUTING

ABOUT ALCOM

Bridging the gap between technology, people and business with a human interface

Alcom electronics is the leading “technical distributor/stocking rep and manufacturers’ representative” for Electronic Component Solutions, Wireless Embedded Connectivity & Sensors, Boxed Wireless & Industrial Controls Networking, Display & Touch, Led & Solid State Lighting, Power & EMC, Rugged Mobile Computing and Embedded Systems, AI & Edge computing. We combine multiple product groups and matching advanced technologies fitting the end application of our customers.

Alcom electronics proudly represent the companies on our line-card in a true partnership by providing manufacturer certified technical sales and application engineers. This guarantees our business partners to meet solution-driven, technical competent and enthusiastic people supporting our customers with specialism, knowledge and design-in expertise from the ground up at Alcom.

We create value from component, module, board or system-level by presenting unique and scalable solutions that are leading the way into the 4th industrial revolution.

Alcom electronics differentiates itself with all round services based on technical competence and know-how starting at the customers’ design-phase of a new design concept. We offer on-demand and flexible customer-specific logistics including cost-efficient worldwide supply chain management and focus on availability, longevity and price-performance competitiveness.

Alcom is the right organization for electronics professionals in R&D, development purchasing and logistics roles. A knowledgeable and dedicated team of 50 people are driving and servicing a wide variety of customers either OEM, big, small or start-ups active in diverse vertical market segments and applications.

We emphasize on a personal support and sustainable relationships at human scale supporting the local “make-industry”.



PROVIDED ADDITIONAL SERVICES

- Accessories to complement the key building blocks of a strategic component, module, board, display power or embedded system
- Worldwide A-Z product sourcing with focus on hard-to-get and EoL products
- Firmware updates, device programming
- Configuration of customized display and embedded system solutions
- Display & embedded kit or system-solution production and assembly

Let's connect

We invite all our customers and interested people and companies to connect and to stay in touch about the latest innovations, advanced technologies, future roadmaps and what is going on at Alcom electronics via personalized customer and supplier meetings, customer in-house seminars, exhibitions, social media, website, webinars and encourage to subscribe for:

MONTHLY TIPS 4 DESIGNERS

The latest innovations bundles monthly by separate publications:

- Semiconductors, wireless & sensors
- Passives, e-mech, power & EMC
- Boxed wireless & industrial networking
- Displays, boards & systems
- LED & Solid State Lighting
- Rugged Mobile Computing

FEATURED TECHNOLOGY/SUPPLIER/APPLICATION

A monthly newsletter featuring a new or specific manufacturer, application, technology or product category.



Let's meet and collaborate

Every person or company is welcome at Alcom.

The Alcom electronics qualified sales team is always at your disposal to meet with its guests, either friends or business partners- virtual or live.

We love meeting our business partners in person and are glad to serve our visitors a fresh cup of coffee.

ALCOM BELGIUM

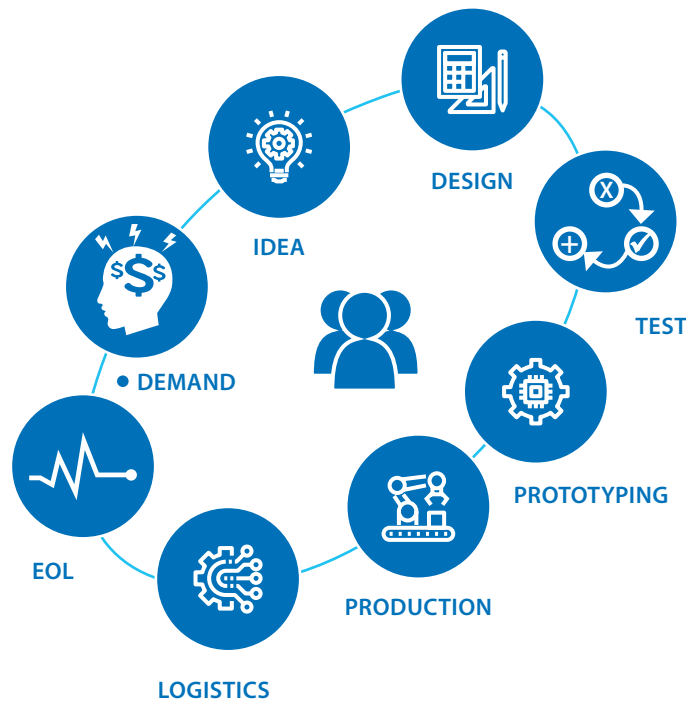
Alcom electronics nv/sa
Singel 3
2550 Kontich, Belgium
Tel: +32 (0)3 458 30 33
Email: info@alcom.be
www.alcom.be

ALCOM THE NETHERLANDS

Alcom Electronics B.V.
Rivium 1e straat 52
2909 LE Capelle a/d IJssel, The Netherlands
Tel: +31 (0)10 288 25 00
Email: info@alcom.nl
www.alcom.nl

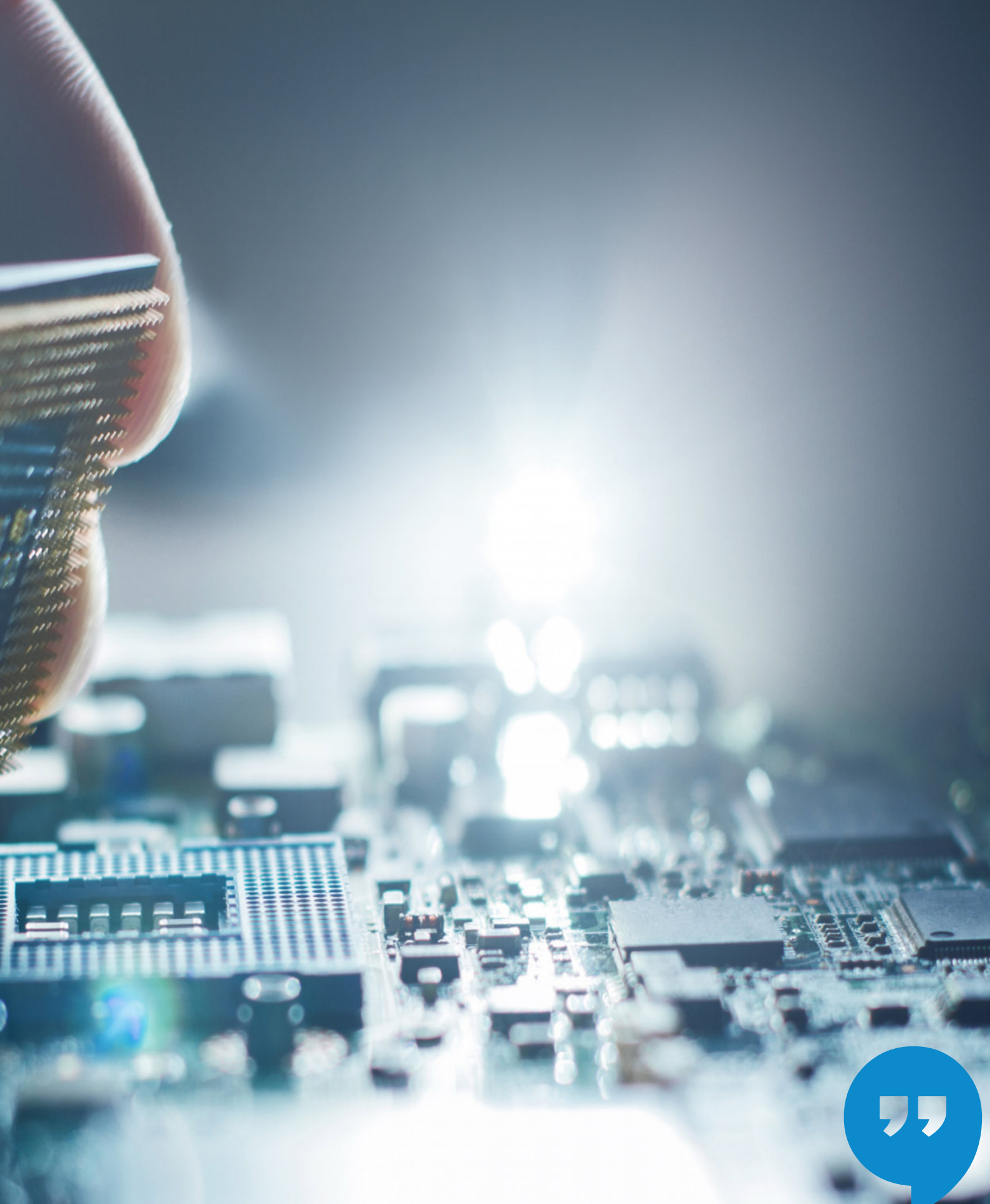


Co-creation starts here



Alcom considers everybody an indispensable added value in the collaborative chain with all of its partners.

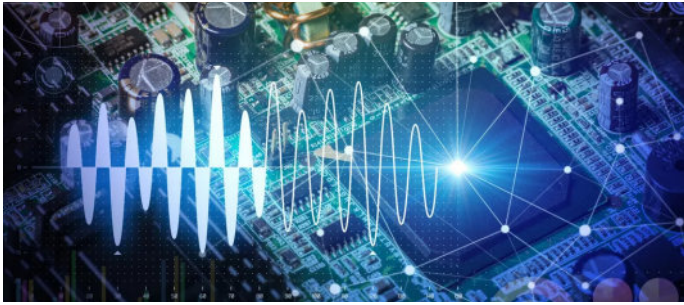




Components selection is one of the most crucial and challenging aspects of the electronic system design

ELECTRONIC COMPONENT SOLUTIONS

Semiconductors



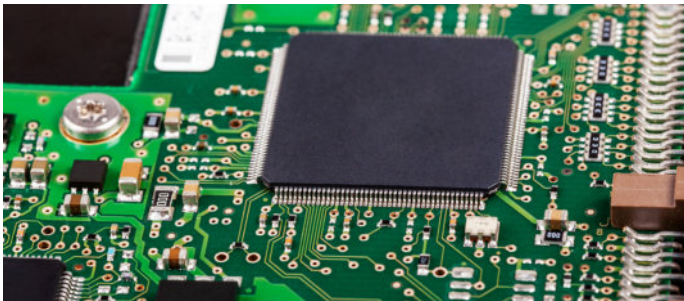
Audio, video, multimedia

- Music & voice, audio, video, broadcasting ICs
- Connectivity solutions for long-reach, high resolution video driving HDBaseT and MIPI A-PHY standards.
- Audio SOCs; ISD Chipcorders for voice, audio recording and playback
- Audio CODECs; ADCs; DACs; Voiceband CODECs
- Audio amplifiers; audio & speech controllers
- Miniature & Vehicle speakers



Interface & Network ICs

- USB host & bridging solutions, USB development modules & cable solutions, Embedded Ethernet, EtherCAT, MotionNet, ISDN line interfaces, network controllers, PCIe
- RS-232/RS-422/RS-485/LVDS/I2C/Profibus/CAN/LIN ICs
- Isolated Interface; ISO-RS485/RS422; CAN; I2C; DI/DO
- Digital isolators, I/O expansion ICs
- LCD controllers & drivers, HMI display ICs, Embedded video engines
- Display power LED/RGB LED/LED Backlight Drivers & LCD Bias Supply
- Touch, proximity & gesture
- RFID/NFC



Memory ICs & modules

- Parallel NOR and NAND Flash/SPI NOR and NAND Flash, I²C Eeprom, DDR Dram & Sync Dram, LP SRAM, OTP memories
- DRAM Modules SDRAM, DDR1/2/3/4/5
- NAND Flash Modules eMMC, PATA/CF, SATA, SD, microSD, USB

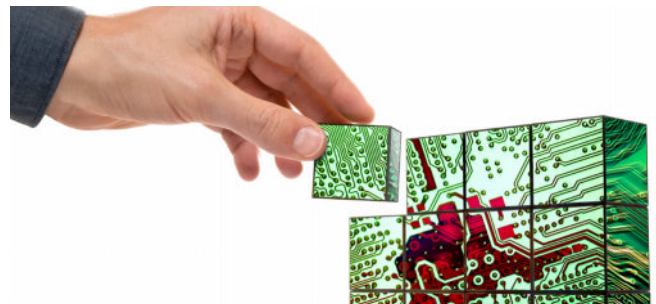
Analog, mixed signal & sensor ICs

- ADC/DAC-Isolated ADCs, mixed signal, precision analog & interface
- Linear & Amplifiers; Isolated Amplifiers
- Analog signal processors
- Analog & digital isolators
- Isolated standard and smart Drivers
- Magnetoresistance based products including sensors, isolator and power
- Intelligent sensors-biometric, humidity, magnetic, optical, proximity, light, temperature, thermocouple, position, pressure, current, angular position, vibration & accelerometers
- Image & TOF sensors



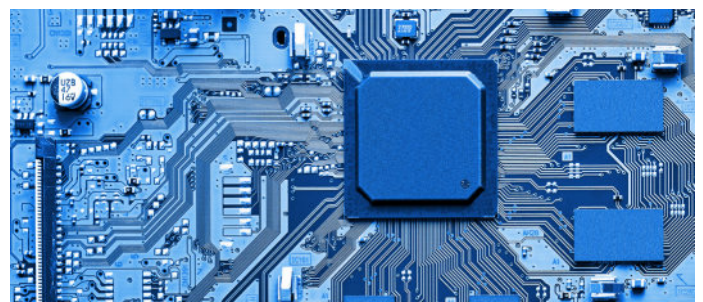
Active circuit protection

- Overvoltage & Protection ICs, USB data line protection ICs, EMI/ESD Suppression
- TVS arrays, Steering Diodes, Thyristor Surge suppressors, TVS Diode Arrays
- Polysurg ESD suppressors, Varistors-MLV/MOV/MOVTP/MOVGT, Automotive rated products



Microcontroller, microprocessors

- Microcontrollers & Microprocessors 4-32 bit; Proprietary and ARM Cortex Cores; RISC-V; DSP's, Interface, peripheral & connectivity MCU's
- MCU/MPU Starter kits, development boards & tools
- IoT Silicon, software and tools for protocols incl Bluetooth, Wi-Fi, Wi-Sun, Zigbee, Z-Wave, Thread, Matter, Amazon Sidewalk and proprietary.
- Identity provisioning for secure IoT infrastructures
- Secure elements, smart card products and open ARM platforms for security applications, Managed PKI to secure IoT devices



Semiconductors



Timing & frequency control

- kHz, & MHz SMD/THT Quartz Crystals
- Quartz Crystal oscillators uPower/ultra low power/programmable
- MEMS timing-oscillator, clock and resonator products
- Real time clock modules
- Jitter Cleaners/Network Synchronizers
- Clock buffers, clock generators
- VCXO, VCTCXO, SPXO, LPXO, TCXO, OCXO
- Spread spectrum, high temperature, automotive oscillators
- Ceramic resonators, SAW resonators products & Filters
- 1U/3U rack mounting & DIN-rail high precision time servers



Power management ICs

- AC/DC & DC/DC power management
- PMIC, LDO, supervisory, reset & battery monitoring management,
- Single & multiple output power modules with integrated inductor
- Moulded inductors supporting power management ICs
- USB, Load & Analog switches, e-fuses
- High & Low voltage switches
- MOSFET drivers, Power switches & modules
- Wireless charging components and modules
- Isolated DC/DC Converters & Modules



Power semiconductors & modules

- Diodes, rectifiers, power MOSFET & JFETs, thyristors
- Power modules with integrated inductors
- IGBT drivers & SIC driver DC/DC converters
- Wireless power modules

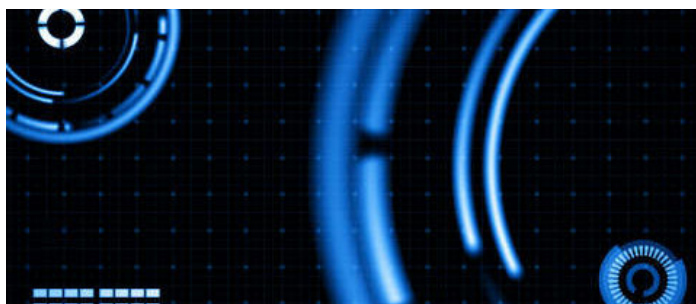
Programmable logic, ASIC, ASSP

- Small & medium density FPGA's , Arora (V) SRam & Littlebee Flash based FPGA's
- Bridge ASSP between USB & SPI, JTAG, I²C, GPIO and UART
- ASIC solutions-gate arrays, embedded arrays, standard cells
- Starter kits and development tools
- EDA integrated design tools from design entry to verification



Motion/motor control

- DC Motor drivers, stepper motor and lens motor drivers; non-isolated Gate Drivers
- Motor Drivers & Controllers; 3 phase BLDC Motor controllers
- Smart motor modules
- Robot and motor drive technology including e-mobility

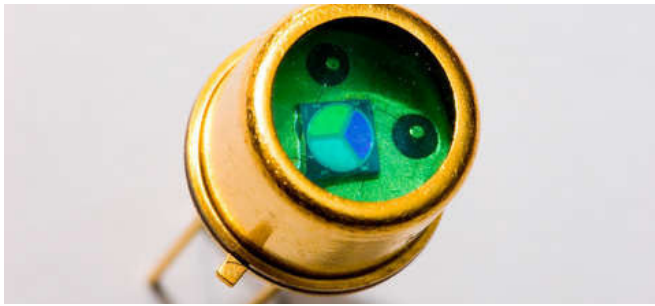


PoE power management modules

- PoE PD & PSE ICs & integrated modules
- High power PoE transformers
- PoE systems including injectors/midspan and switches



Timing, electromechanical, connectors & cooling

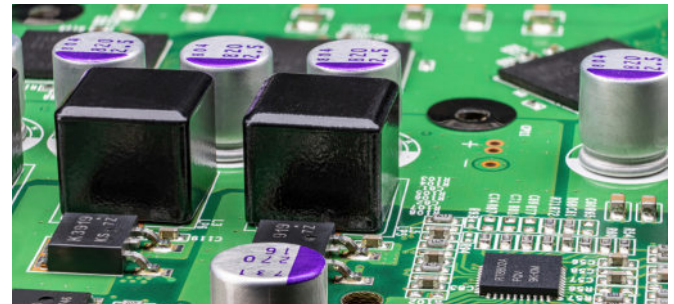


Light & optical sensors

- Silicon, InGaAs & GaAs photodiodes
- Laser Diodes-Detectors, Emitters, High Power Pulsed, InGaAs APD/PIN modules & modules
- Light sensing (customized) solutions

Capacitors & resistors

- Tantalum, Chip Ceramic & MLCC, film,
- Polymer-Radial-SMD-Aluminum Electrolytic
- Double layer supercapacitors & supercapacitor modules
- Resistors & thermistors



Circuit protection

- Overvoltage & Protection ICs, EMI/ESD Suppression
- TVS arrays, Steering Diodes, Thyristor Surge suppressors
- Polysurg ESD suppressors, Varistors-MLV/MOV/MOVTP/MOVGT, Automotive rated products
- Fuses, efuses, PTC, thermofuses, fuse-holders/blocks/clips
- Thermal circuit breakers and accessories; voltage selectors
- Multi-discrete modules & power modules

Magnetics, inductors & transformers

- Chip/surface mount/DIP, high power inductors & ferrite beads
- Common-mode & differential mode chokes, magnetic cores, bobbins
- RF & Signal Inductors
- Ethernet magnetics & connector modules
- Low & high frequency transformers, signal transformers
- Battery Management system magnetics, Automotive magnetics
- Gate drive/current sensors/planar transformers
- Space, MIL and high-rel magnetics
- EMI & RFI Filters



Connectors

- PCB-board to board, headers & sockets, wire to board, IC sockets, plugs & jacks
- PCB card-mPCIe, M.2, mPCI, MXM, SO DIMM, SIM Card, COMe, cPCI, PC/104, Pogo pins, battery connectors, terminal blocks
- D-Sub incl filtered & mixed combi D, hoods & accessories & customized solutions, I/O; sealed I/O, circular M5/M8/M12/M23, RF, optical, waterproof connectors
- DIN41612, highspeed backplane, VPX, VME-bus, advanced TCA
- Power entry modules without filter, IEC power distribution units
- Automotive & machine vision/camera link connectors

Cable assemblies & cords

- Inlet/outlet/cord connectors & cord sets
- Cable assemblies-RF, circular, USB, ethernet, SATA, HDMI, board to wire, LVDS,...
- USB cable assemblies-USB RS232/RS 422/RS 485/TTL cable series
- Custom cable assemblies
- Network Cables RJ45 Cat 5e/Cat6/Cat 6A
- LED Connectors Cable Assembly
- Coaxial cable assemblies, Machine vision and camera link cables
- High speed transmission cable assemblies, Specialized vehicle harnesses



Connectors & cables

Thermal management

- Thermal Pads/Pastes/Greases/Tapes/Gap fillers
- Insulator materials
- Axial/blower DC, AC and EC Fans, Blowers and accessories
- DC chip coolers
- Thermal modules, Heatsinks and liquid cool products



All-in-one mechanical solutions

- Complete HMI solutions including display, electronics and housing
- Sub assemblies & multi process assemblies
- One-stop assemblies of multiple parts mechanical & electronics
- Aluminium extrusion-plastic injection-precision machining-die casting-metal stamping-die cutting-surface treatment-busbars-cold plates-emi

KEY PARTNERS



Leading the Internet of Things through communication and close collaboration

WIRELESS EMBEDDED CONNECTIVITY & SENSORS

Wireless embedded connectivity & sensors



Antennas

- Embedded & external antenna's
- Cellular, mmWave, Sub 6 GHz, GNSS, WiFi, Bluetooth & NFC, combo, ISM/LoRa, UWB, Satcom,...
- In-building/outdoor & vehicular antennas
- Standard & Custom configured solutions
- Manufacturer-approved antenna solutions for each router or module
- RF Cables & connectors, Assemblies, accessories & mounts

Industrial embedded communication

- 5G/4G/3G/2G/GNSS
- Matter, Bluetooth, BLE, Thread, Zigbee, Z-Wave, Wi-Fi, Sub-Ghz multiprotocol and proprietary ICs and modules
- SBCs with integrated wireless



Managed IoT connectivity and services

- Full hardware and cellular connectivity solution sets
- IoT connectivity management for remote smart Connected products
- Edge-to-Cloud solutions for connecting industrial assets
- IoT device monitoring and cloud services
- Device configuration and programming
- Secure connected industrial devices
- Test and certification support services



Sensors

- Solid State Ultra-Low power CO2 gas sensors
- Humidity, light, magnetic, optical, temperature, vibration, angular position, magnetic hall effect sensors, current sensors,
- Vibration Gyro sensors, inertial measurement, accelerometer,
- Piezo and ultrasonic transducers
- LoRaWAN wireless IoT sensors
- mmWave presence detection and sensing



Wireless connectivity SoC's & modules

- WiFi, Bluetooth, Lora, Zigbee, Sub-Ghz, Cellular, proprietary, Sigfox, Matter, Thread, Wi-SUN, Z-Wave, multiprotocol as SoC and/or module
- XBee cellular modems and RF wireless modules for 2.4 Ghz & Sub-1GHz
- WiFi 5 802.11ac/WiFi /6E 802.11ax/Wi-Fi 7 802.11be modules
- 5G/LTE-A/LTE-A Pro/LTE Cat 1/Cat M, NB-IoT, 3G,2G wireless modules
- Cellular embedded modems
- Automotive-grade 5G, C-V2X, LTE Cat 6/Cat 4 modules
- GNSS repeaters & positioning modules, trackers & receivers



KEY PARTNERS



*Building connected industry,
making industry connected*

BOXED WIRELESS & INDUSTRIAL CONTROLS NETWORKING

Boxed wireless & industrial controls networking

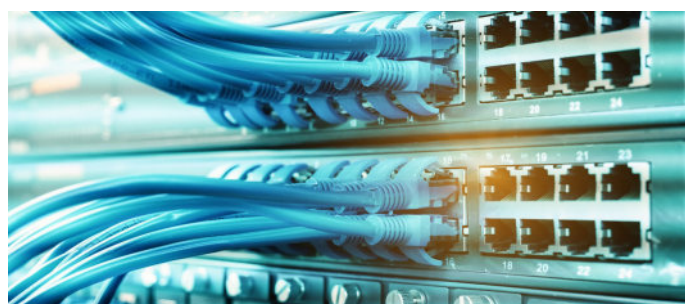


Antennas

- Embedded/external/in-building/outdoor & vehicle mount antennas
- Cellular, mmWave, GNSS, WIFI, Bluetooth & NFC, combo, LPWA & ISM, Satcom,...
- Custom configured solutions
- Manufacturer-approved antenna solutions for each router or module
- Cables, connectors, accessories & mounts

Industrial control networking

- Rackmount & DIN-Rail Managed/Unmanaged multiport Ethernet switches with or w/o PoE
- EN60155 Ethernet switches
- Serial and USB-connectivity, protocol switches, fieldbus gateways
- Media converters
- Wired RS-232, RS-422, RS-485, Ethernet and CAN solutions
- Network Management Software
- Time synchronization products



Industrial wireless & cellular

- Modems, routers and gateways
- Enterprise, industrial, transportation, vehicle routers
- Gateways for specific markets such as renewable energy & metering
- Wireless LAN access point
- Short-range wireless-Bluetooth, LoRa, Zigbee, ISM,...
- IoT platforms for easy management, monitoring and control
- Complete offerings including antennas, device management and support packages

Managed IoT connectivity and services

- Scalable system-on-modules and gateways including cellular connectivity
- IoT device monitoring of devices and data points
- Edge-to-Cloud solutions for connecting industrial assets
- IoT device monitoring and cloud services
- Edge-to-cloud solution services



KEY PARTNERS

		 Beijer ELECTRONICS					



We are passionate about the best display system solutions that our customers can design into their product

DISPLAY & TOUCH

Display & touch



e-Paper - OLED - VFD - LCM

- Standard & customized monochrome character/graphic LCD displays
- Intelligent displays with RS-232, SPI and I²C
- VFD displays and modules
- OLED graphic and character display modules
- Mono and color ePaper displays up to 42"
- Controller boards and embedded system solutions for public displays and healthcare

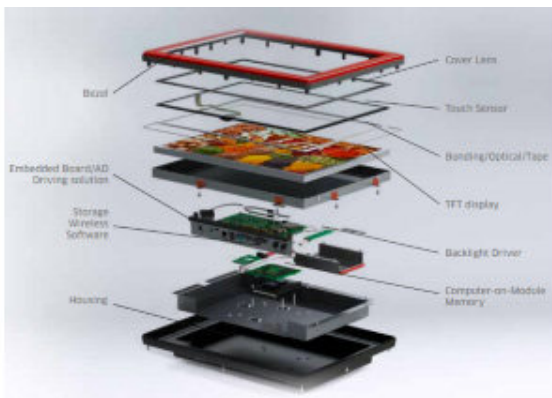
Input systems

- Complete HMI solutions incl input system, display, electronics and housing
- Standard and customized front panels & touch solutions
- PCAP, resistive, IR, SAW touchscreens
- EMI shield windows for TFT modules
- Open frame monitors
- Capacitive switches
- Membrane switches



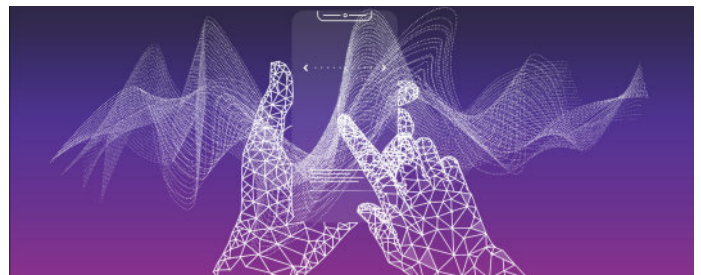
TFT-LCD displays

- Standard & modified or enhanced TFT Mono & color displays
- Small, medium, large industrial & public information displays
- Curved/outdoor/stretched bar/square and round displays
- High brightness, high resolution, wide view & wide temperature displays
- Sunlight readable displays
- Smart interactive displays
- Automotive, In-vehicle, Medical, Marine displays
- GUI Design Tool supported PCAP TFT Modules
- Display driving boards, cables, accessories and value-add panel integration
- Customized display kits & complete solutions
- IC display controllers



Touchscreen technologies

- Resistive/P-cap/infrared and SAW touch
- Optical bonding and assembly of display and touchscreen
- Touch screen controllers
- Capacitive touch switches, sliders and/or wheels
- Custom-configured display & touch integration
- Customized cover glass



Total Touch solutions

- Aqua-proof & outdoor PCAP touch
- Optical Bonding Technology
- 3 in 1 PCAP Touch solutions
- Resistive Multi touch
- Open frame touch monitors
- Coating Solutions

KEY PARTNERS



*Light is perception, generates inspiration
and intensifies emotion*

LED & SOLID STATE LIGHTING

LED & solid state lighting



LED light sources

- LED light sources- Chip-on-Board (CoB) arrays for lighting markets
- UV, IR, horticulture, specialty white, dynamic COB LEDs
- SMD, lamp & 7 segment displays
- LED modules & subsystems



LED strips

- Linear and square modules
- Strips for indoor/outdoor usage
- 12/24/48VDC & 230VAC LED strips
- Dot-free and COB LED strips
- Human centric, dim to warm and tuneable white LED strips
- RGB and RGBW LED strips
- Consumer & industrial vertical market-specific lighting LED strips
- Matching dimmable or non-dimmable CV drivers in different form factors with optional PIR sensors.
- LED strip accessories

LED ecosystem support & solutions

- LED heatsinks, heatpipes, liquid cooling
- Optics, holders and connectors
- LED power drivers & power-to-light solutions
- Smart driving controllers
- LED controllers & IC drivers
- LED lighting backlight, illumination & signalling, monitoring, supervision
- AC/DC non-isolated/isolated & LED lighting



LED power drivers & controls

- Programmable LED power-constant current; constant power; constant voltage
- Standard and smart outdoor/indoor LED power drivers
- Power-to-light solutions
- DC powered LED drivers
- Light management by voice command
- Wireless and smart intelligent control and dimming
- Flush mount solutions



KEY PARTNERS



Balancing the essential power solution between performance, reliability and cost

Power conversion



Batteries

- Lithium, silver oxide & tabbed lithium coin cells
- Rechargeable lithium and lithium-ion polymer batteries
- Thin-film batteries
- Battery holders and hearing aids
- Battery packs
- Driving solutions for e-mobility



DC/AC inverters

- Medical-grade UPS systems
- UPS for residence, retail, edge computing, server rooms, cloud & datacenter infrastructure



LED power drivers & controls

- Programmable LED power-constant current; constant power; constant voltage
- Standard and smart outdoor/indoor LED power drivers
- Power-to-light solutions
- DC powered LED drivers
- Light management by voice command
- Wireless and smart intelligent control and dimming
- Flush mount solutions

AC/DC power supplies

- Open frame, Enclosed, encapsulated, board mount, din rail, rack mount, HiRel and MIL-COTS
- External plug-in adapters; desktop, flush-mount and USB power supplies
- Industrial, ITE, household, gaming, medical, MIL, aero- approved power
- Standard/modular/configurable & customer-specific power
- Military power systems-rackmount, VPX, configurable
- LED power



Battery chargers

- Battery management ICs
- Compact interchangeable AC-plug & desktop chargers
- Intelligent eco-friendly battery charge modules
- Battery chargers for lead acid and lithium-ion batteries
- E-Mobility converters including on board chargers

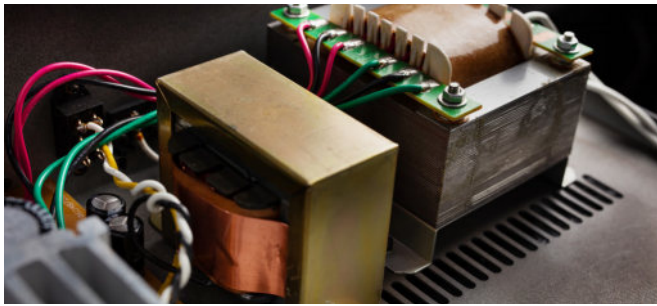


DC/DC converters

- Open frame, enclosed, encapsulated, board mount, external, rack mount
- DC/DCs for general industrial, data & telecom, pv, medical and rail
- Brick DC/DC Converters
- Power modules with integrated inductors
- Power management ICs
- MIL-COTS



Power conversion & EMC

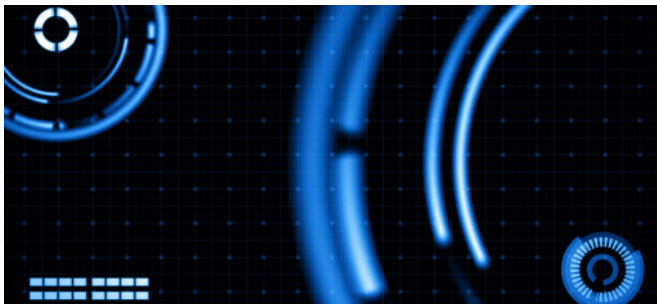
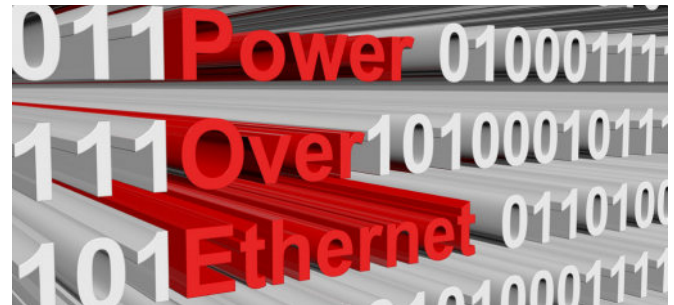


Mains transformers

- PCB & flat laminated transformers
- AC/DC power modules for PCB mounting
- Single/three-phase mains transformers
- Toroidal transformers

PoE power management modules

- PoE PD & PSE ICs & integrated modules
- High power PoE transformers
- PoE systems including injectors/midspan and switches



Power management ICs

- AC/DC & DC/DC power management
- PMIC, LDO, supervisory & power management
- Single & multiple output power modules with integrated inductor
- Semi-shielded, molded inductors supporting power management ICs
- Automotive buck, boost, PMIC, linear regulators
- LED lighting automotive backlight, illumination & signalling, monitoring, supervision
- Power switches & modules
- Transient voltage suppressors

Power solutions >1000 Watt

- Modular high density configurable and conduction cooled power supplies up to 1200W
- Coolant power supplies providing conduction, convection, air and liquid cooling
- Power distribution units

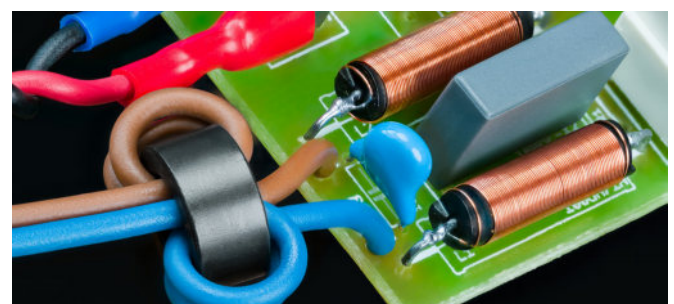


Wireless charging

- Wireless power transceiver, receiver and transmitter modules
- Wireless charger Tx/Rx flash MCU's
- Inductive charging

EMC/EMI/RFI filters

- EMI and RFI filter components
- Suppression components including capacitors, coils, transformers and HF chokes
- Power entry modules with filter, single and 3-phase block filters
- EMI shield windows for TFT modules



Power components



Current & hall effect sensors

- Hall effect current sensors
- Hall effect linear current sensors ICs
- Current sense magnetics & transformers

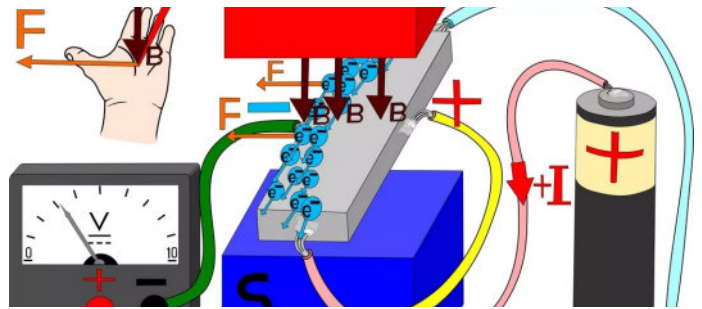


Power semiconductors & modules

- Diodes, rectifiers, power MOSFET & JFETs, thyristors
- Power modules with integrated inductors
- IGBT drivers & SiC driver DC/DC converters
- Wireless power modules

Circuit protection & discrete semiconductors

- Diodes, rectifiers, transistors, MOSFETs, JFETs, thyristors
- TVS diodes & ESD suppressors, avalanche breakdown diodes, steering diode TVS, high power TVS, PPTC devices, multilayer varistors & MOVs
- Fuses, resettable fuses, thermofuses, fuseholders, fuse blocks & clips
- Thermal circuit breakers and accessories; voltage selectors
- Multi-discrete modules & power modules



Magnetics, inductors & transformers

- Chip/surface mount/DIP, high power inductors & ferrite beads
- Common-mode & storage chokes, magnetic cores, bobbins and plastic parts
- Ethernet magnetics & connector modules
- Low & high frequency transformers
- Automotive magnetics
- Gate drive/current sense/planar transformers
- Space, MIL and high-rel magnetics



KEY PARTNERS

			FRIWO		INVENTRONICS	LinkCom LinkCom Manufacturing Co., Ltd.	



*Rugged devices for tough environments
are always worth the investment*

RUGGED MOBILE COMPUTING

Rugged tablets/PDA's/vehicle mount computers



Rugged PDA's, tablets, vehicle mount computers

- Rugged PDAs, tablets and computers for harsh environments
- Military tablets/panel PCs
- Semi-rugged tablets & medical tablets for clinical environments
- Explosion proof PDAs
- Mobile data terminals and vehicle mount computers
- IoT devices, wearables and hands-free scanning wearables
- Barcode scanners
- Accessories, software solutions, extended warranty programs

Why rugged?

What's the difference?

Semi-rugged: Often referred to as business rugged for professional use.

Fully-rugged: Often tested to withstand various military grade specifications, extreme temperatures, can be dropped and resistant against water or dust.

Ultra-rugged: Often tend to cost more than the rest because they are designed to withstand the absolute harshest conditions and are developed to be pretty much indestructible.

For whom?

Whether or not to invest in a rugged versus consumer device is the first key question that is often overlooked.

Rugged devices provide **peace of mind** for your mission critical information and are built to withstand the demands of a truly mobile workforce.

The rugged mobile devices are designed for **anyone** who works in a **tough environment**. Whether the challenges come from weather, extreme temperatures or tough work situations, our devices measure up to all of them.

Be assured your Rugged device is seamlessly **integrated** into your **company's environment**.

Your benefits?

Total Cost of Ownership is the total amount estimated to help business managers assess the costs related to the purchase of any capital investment, spread out over the life of the item.

Tangible and intangible costs are both to be considered when purchasing or investing in a major asset.

Tangible costs: Purchase price, installation and implementation costs

Intangible costs: The percentage of time you'll be without your device, service and repair costs including hassle and time, lost sales, customer service impact, data loss, employee down time, customer satisfaction impact, employee morale, time wasted to diagnose the issue.

The cost of having your company's IT administrator perform the required maintenance can further increase the overall cost of a non-working device.



KEY PARTNERS





Making modular industrial designs easier, more powerful and more flexible

EMBEDDED SYSTEMS, AI & EDGE COMPUTING

Boards & systems

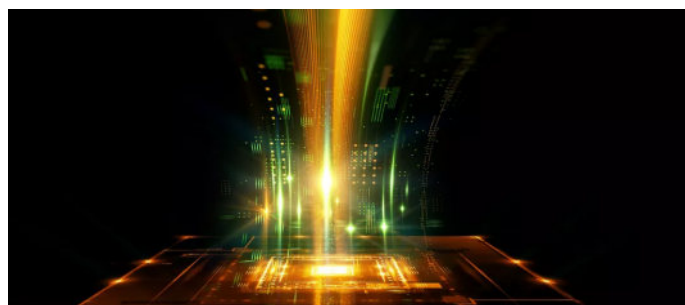


19 inch, VPX, cPCI, xTCA

- CPCI/ cPCI-serial/ serial-blades, enclosures, systems, backplanes
- VPX, OpenVPX rugged platforms & peripherals
- AdvancedTCA platforms; switch and processor blades
- 19" 1U-4U rackmount systems & tower workstations
- Rackmount integrated system solutions
- 19" Chassis, backplane & power supplies
- Accessories

Computer & System-on-Modules

- ARM, x86, Power Architecture, GPU-base
- Modular concepts offering replaceable and upgradable solutions
- SMARC, Qseven, ETX, MXM, DIMM, SODIMM, MicroSoM, LGA
- COM express type 7/6/2/10
- COM-HPC (COM-HPC server/client type)
- SoM's with integrated wireless connectivity
- COM cooling solutions
- Google Coral Edge TPU Modules & SoM's
- Proprietary standard solderable/pluggable SoM's
- Open standard modules, Starter Kits, Evaluation and carrier boards

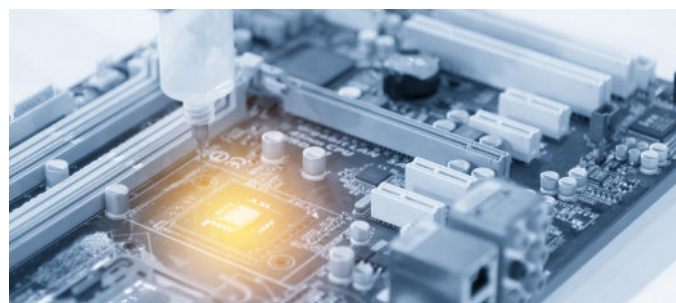


Embedded I/O expansion modules & systems

- Data acquisition, digitizers, GPIB
- CAN, CAN FD and LIN fieldbus communication
- Bus converter modules
- Analog output, digital & remote I/O modules
- Digital & Analog for test, Measurement and manufacturing
- Controllers and distributed I/O with integrated Codesys control

GPU and Edge computing

- Embedded Graphics based on Nvidia Quadro & Intel Arc
- MXM GPU modules and PCI Express based on Nvidia Quadro GPU's
- Edge AI platforms based on Nvidia Jetson
- Edge AI solutions with Nvidia Jetson Orin
- Edge AI computing platforms and complete systems
- High performance AI Computing Systems



Industrial & embedded motherboards

- 3,5"-5,25" SBC, PC/104 & PC/104+, EPIC, Pico-ITX, ATX Thin Mini-ITX, Mini-ITX, PICMG
- Single Board Computers - SBC's, supporting multiple wireless interfaces
- Chassis/backplane/power supplies, peripherals & accessories

Industrial embedded communication

- 5G/4G Cat1bis - Cat-20/Cat-M/NB-IoT/3G/2G/GNSS
- Bluetooth, BLE, Thread, Zigbee, Matter, Z-Wave, Wi-Fi, Sub-Ghz multiprotocol and proprietary ICs and modules
- System-on-modules & SBC's with integrated wireless
- Smart automotive-grade modules
- Antenna's, cables and connectors



Boards & systems



Edge AI Computing for Machine vision

- Full spectrum of frame grabbers, video capturing cards, embedded vision systems & more
- AI Smart camera, vision system & AI vision software
- Compact-integrated PC systems with flexible expansion



PXI products

- PXI products for test & measurement
- PXI/PXIe modules, controllers, and chassis
- Remote controller



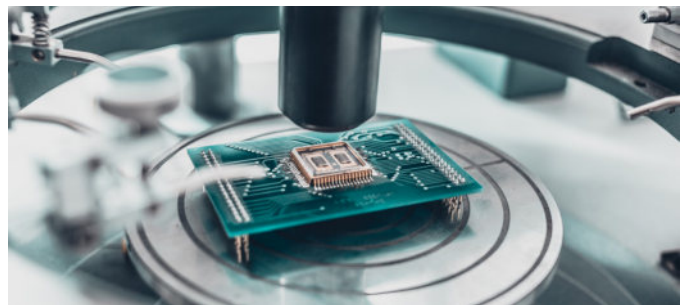
Industrial PC & systems

- Modular embedded computers, IPC systems & IoT gateways
- GPU and Edge AI
- Compact/Expandable/integrated fanless embedded PCs
- NUC Mini PCs, kits and elements
- Tinker Board ultrasmall SBC- the best industrial Raspberry Pi alternative
- Industrial multi-touch displays, open-frame monitors and panel PCs
- Industrial & stainless steel panel PCs & HMI
- ATEX certified box PCs
- In-vehicle, medical, Rail, Marine specific Embedded Computing
- Standard and custom-configured 19" rackmount form



Motion/motor control

- Motion control & I/O
- Pulse motion controllers
- EtherCAT motion control products
- Frequency inverters & servo motion
- Smart motor modules
- Robot and motor drive technology including e-mobility



Smart camera

- AR/VR and XR digital wearable products/smart tracking solutions
- AI smart & embedded vision camera

Panel PC's & HMI, Memory & storage



Panel PC's & HMI

- Industrial displays & panel PCs; medical & open frame panel PC
- Industrial multitouch panel PCs, displays & touch monitors
- Harsh-and extreme environment panel PCs & HMI
- ATEX-certified panel PC's, displays & box PCs
- In-vehicle panel PCs
- E-paper public display and healthcare IoT solutions
- Military Panel PC



Memory & storage

- Managed NAND-eMMC, Securstor and NVMe
- Embedded/industrial memory cards
- Solid state drives and modules
- DRAM modules

Input systems

- Complete HMI solutions incl input system, display, electronics and housing
- Standard and customized front panels & touch solutions
- PCAP, resistive, IR, SAW touchscreens
- EMI shield windows for TFT modules
- Open frame monitors
- Capacitive switches
- Membrane switches









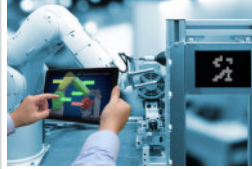










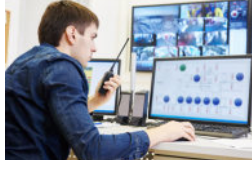





Touchscreen technologies

- Resistive/P-cap/infrared and SAW touch
- Advanced & cost-effective optical bonding solutions
- Touch screen controllers
- UV-resistant, high brightness, flat, multifunctional touch displays
- ePaper displays with cover lenses (in glass, PC, or PMMA)
- ePaper display services including front light guides, touch and driving board
- Capacitive touch switches, sliders and/or wheels
- Custom-configured cover glass, display & touch integration
- LVDS and FCC cables, circuit adapters, video cables, power supply



KEY PARTNERS

APPLICATIONS & MARKETS

				
A/V BROADCAST	AEROSPACE & MIL	AGRICULTURE	ARTIFICIAL INTELLIGENCE & EDGE COMPUTING	AUTOMOTIVE
				
AVIONICS & SATELLITE	E-MOBILITY	ENERGY & UTILITIES	ENTERTAINMENT & GAMING	FACTORY & INDUSTRIAL AUTOMATION, ROBOTICS
				
GIS, MAPPING & MINING	HOME & BUILDING AUTOMATION	IIOT & INDUSTRY 4.0	IN-VEHICLE COMPUTING	INFRASTRUCTURE
				
IOT	KIOSK, POS & DIGITAL SIGNAGE	LIFE SCIENCES, LAB, BIO & PHARMA	LIGHTING & ILLUMINATION	LOGISTICS
				
MARINE	MEDICAL, HEALTHCARE & FITNESS	MOBILE & WEARABLES	MOBILE WORKERS & FIELD SERVICES	MOTOR CONTROL
				
POWER CONVERSION	PUBLIC SAFETY	REMOTE MONITORING	RF & WIRELESS COMMUNICATION	SECURITY & SURVEILLANCE
				
SMART RETAIL	T&M AND INSTRUMENTATION	TRAFFIC & TRANSPORTATION	WHITE GOODS & HOME APPLIANCES	WIRED DATA & TELECOM



Let's participate in your next big idea.

