

DISPLAY INDUSTRIAL SOLUTIONS VISIONS

PLC - Compact Controller with Satellite Displays 2.0" - 10.1"

- Operating and Monitoring via Touch
- Brilliant IPS Displays
- 1000 cd/m² (typ.)
- 2" - 2.8" - 3.5" - 4.3" - 5" - 7" - 10.1"
- Connectivity: WiFi/Ethernet + RS-485
- Under-plaster, Wall mount, Device integration
- Free Windows Tool
- Simulator and Debugger

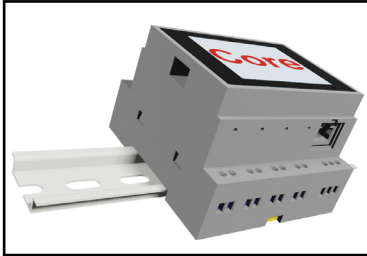
**available as of
Q2/2023**



PLC - Compact Controller with up to 50 Satellite Displays



Control and visualize. The new PLC series expands the classic small control system in the control cabinet with an integrated color display with touch. In addition, this new PLC enables visualization on up to 50 satellite displays. With it, measured values can be displayed and settings can be done by touch. Thanks to edge computing, even complex and visually appealing screen layouts can be easily implemented.

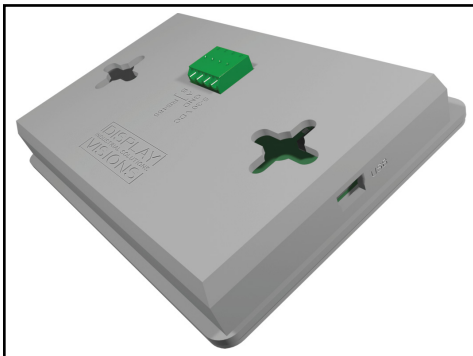


WiFi, RS-485, USB, Ethernet

Program your control tasks via USB and connect the desired satellite displays via RS-485 or wirelessly via WiFi/WLAN. The basic version of the PLC-Core for DIN rail mounting offers 8 digital inputs, 4 relay outputs, 4 analog inputs (0-10V and 4-20mA) and one RS-232. Including Real-Time-Clock. The supply voltage is 12-24V. The control unit (core) provides a high quality TFT display with touch panel to monitor the most important parameters.

Individually networked

All process parameters are automatically synchronized with the satellite displays. This means attractive visualization of current measurements and parameters can be flexibly implemented on one display, as well as individual adjustments of process parameters at another location. Each display follows its individual purpose: for service, work preparation, monitoring or management. Satellite displays are available in different sizes and designs.



Wall mounting, DIN rail, flush-mounting, installation

Different locations require different housings. Therefore, DISPLAY VISIONS offers all display sizes to become integrated into your device. Alternatively, solutions with a housing for wall installation are also planned. The small 2" display is also available for flush mounting.

All satellite displays as well as the core provide a scratch-resistant glass front. Because of touch sensitive surface they enable direct and intuitive interactions. Following formats are planned: 2", 2.8", 3.5", 4.3", 5", 7", 10.1". All provide brilliant displays with 1000 cd/m² in outstanding IPS technology for an all-round viewing angle and stable colors.

The Windows Quick-Programming-Tool

The touch and display functions as well as animations are freely programmable via the free Windows tool „uniTFTDesigner“. Using a graphical WYSIWYG editor, individual pages can be created: here a background, there a logo and a text, further a measured value, a slider, etc. The tool also includes a simulator, with which the result is immediately visible on the PC; including functionality via touch and the inputs and outputs on the core.



| Overview | | | | | | | | | |
|--------------|---------------------------------|---------|---------|---------|---------|---------------|----------|----------|------|
| Value | Core 2.8" | 2" | 2.8" | 3.5" | 4.3" | 5" | 7" | 10.1" | |
| Resolution | 320x240 | 320x240 | 320x240 | 480x320 | 480x272 | 800x480 | 1024x600 | 1280x800 | dots |
| Outline dim. | | 65x43 | 84x58 | 100x65 | 114x84 | 136x96 | 190x125 | 260x185 | mm |
| DIN rail | ✓ | | ✓ | | | | | | |
| Underplaster | | ✓ | | | | | | | |
| Wallmount | | | | | ✓ | | | | |
| Integration | | ✓ | ✓ | ✓ | ✓ | ✓ | ✓ | ✓ | |
| Temp. Range | -20..+70 | | | | | | | | °C |
| Op. Voltage | 12-24V | | | | | | | | V |
| Display | IPS with PCAP, optically bonded | | | | | IPS with PCAP | | | |

Arbitrarily expandable

Different requirements need different displays. Choose from 7 different sizes. All displays were developed in Germany. The support includes at any time a direct contact person from the development incl. assistance in programming.

