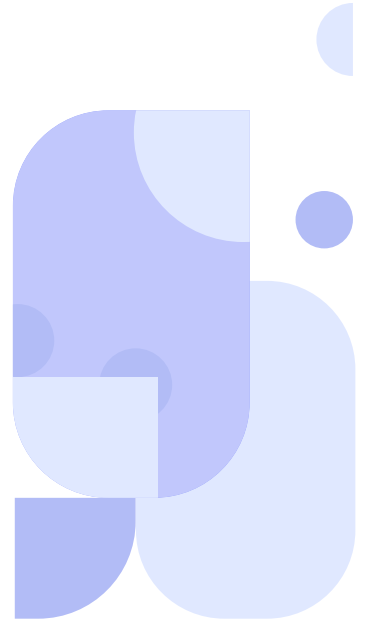
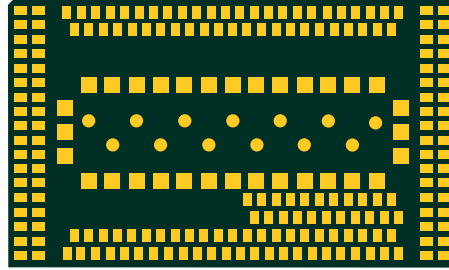


# CQM220



Cavli  
C Series



## Overview

CQM220 is a 5G RedCap module compatible with 3GPP release 17 standards for IoT and M2M applications. It delivers maximum data bandwidth upto 226Mbps in downlink and 121Mbps. The module is available in LGA, mPCIe Gen2 and M.2 form factors.

The module supports an optional integrated eSIM providing global connectivity via Cavli Hubble Device and Connectivity management platform. Cavli's CQM220 also supports optional integrated GNSS making it ideal for tracking applications. The module comes with OpenSDK capabilities, ensuring application level coding for specific without requiring an external host MCU.

CQM220 is perfect for applications that require higher data throughput with location information and global deployments such as Asset Tracking, Vehicular Telemetry System, Industry 4.0 etc.

## Key Highlights



5G RedCap



Integrated GNSS



Integrated eSIM Connectivity



Cavli Hubble Platform



Open SDK



4G Fallback



USB 2.0 Interface

# Basic Module Information

## Basic Specification

Processor: ARM Cortex-A7 @ Speed upto 1.7 GHz

ROM: 256 MB

RAM: 256 MB

OS: Linux

Operating Mode: Stand Alone

## Radio Technology

RAT Used: 5G RedCap

3GPP Release: 17

Fall back: 4G LTE Cat 4

## Bands

NA: 2/4/5/12/13/25/66/7

## Interfaces

UART x4

USB 2.0 x1

PCM <sup>2</sup> x1

I2C <sup>2</sup> x1

SPI <sup>2</sup> x1

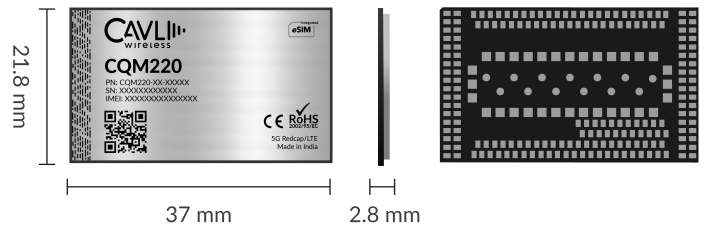
I2S x9

Main ANT x1

GNSS ANT x1

## Applicable Region(s)

North America CQM220-NA



## Packaging

Form Factor: LGA

Dimensions: 37 x 21.8 x 2.8 (mm scale)

Weight: TBD

Other FF: mPCIe, M.2

## Network Speed (Peak Values)

5G RedCap: DL 226Mbps & UL 121 Mbps

4G LTE Cat 4: DL 195Mbps & UL 105 Mbps

## Temperature Range

Operating Temperature: -30 °C to 75 °C<sup>4</sup>

Extended Operating temp: -40 °C to 85 °C<sup>4</sup>

## Power Characteristics

Voltage Range: TBD

Typical Voltage: TBD

NA

TxD Peak TBD

TxD Idle TBD

GNSS (Fix) TBD

## Constellation Coverage

Qualcomm Location Suite Gen 9 (L1+L5)

<sup>1</sup> Optional

<sup>2</sup> Needs SDK

<sup>3</sup> In Progress

<sup>4</sup> Planned

This document is a pre-release version. Some of the technical specifications are subjected to change.



Singel 3 | B-2550 Kontich | Belgium | Tel. +32 (0)3 458 30 33  
info@alcom.be | www.alcom.be  
Rivium 1e straat 52 | 2909 LE Capelle aan den IJssel | The Netherlands  
Tel. +31 (0)10 288 25 00 | info@alcom.nl | www.alcom.nl