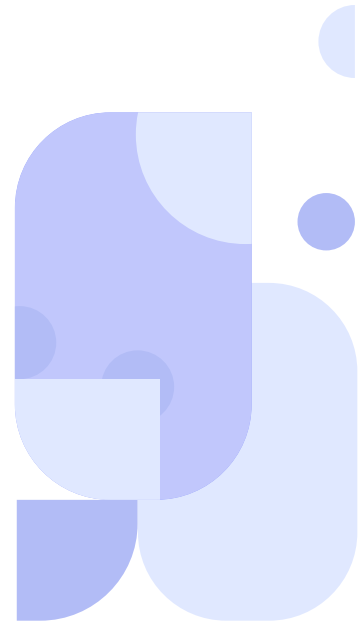
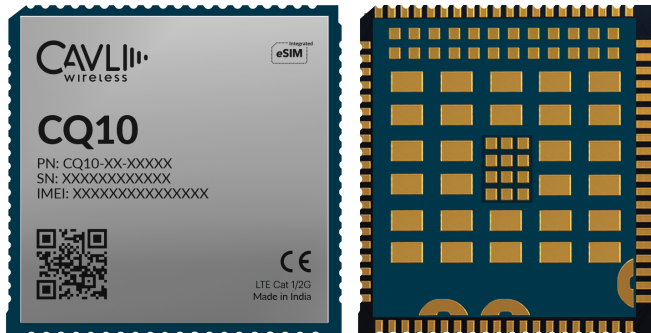


CQ10

Cavli
C Series

Overview

CQ10 is an LTE Cat 1 module with 2G fall back supporting 3GPP release 10 standards, design for IoT and M2M applications. Engineered in LCC+LGA form factor, it delivers a maximum data rate of 10 Mbit/s DL & 5 Mbit/s UL. CQ10 supports in-built GNSS powered by Qualcomm® Location Suite Gen8C Lite (GPS, GLONASS, BeiDou, Galileo and QZSS), ensuring precise positioning. Additionally, it supports VoLTE and SMS over IMS/SG/CS and a wide variety of Internet protocols and industry-standard hardware interfaces.

The module comes in multiple regional variants and CQ10-WW for worldwide deployments. Featuring an optional integrated eSIM powered by Cavli Hubble platform, the module provides seamless global connectivity and wide coverage which helps to reduce the time to market. CQ10 is tailored for IoT and M2M applications, such as asset tracking, automotive, e-mobility, data loggers, fleet management, environmental monitoring and much more.

Key Highlights



LTE Cat 1

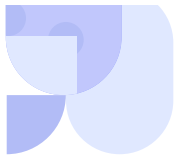


In-built GNSS

Integrated
eSIM¹Cavli Hubble
PlatformVoLTE
SupportSMS over
IMS/SG/CS

2G Fallback

USB 2.0
Interface



Basic Module Information

Basic Specification

Processor:	ARM Cortex-A7 upto 1.3 GHz
RAM:	256 MB
Flash:	256 MB / 512 MB
OS:	Yocto Linux (Kernel 4.14)

LTE Bands

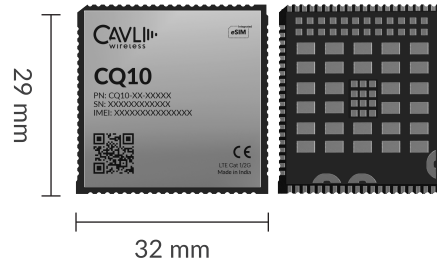
EU:	B1/ B3/ B5/ B8/ B20/ B40
NA:	B2/ B4/ B5/ B12/ B13/ B25/ B26/ B66
WW:	B1/ B3/ B4/ B5/ B7/ B8/ B12/ B13/ B18/ B19/ B20/ B25/ B26/ B40

GSM Bands

EU:	900 /1800 MHz
NA:	900 /1800 MHz
WW:	900 /1800 MHz

Interfaces

UART	x3
USB 2.0 (HS)	x1
HSIC	x1
WLAN/BT (External)	x1
USIM (1.8V / 2.85V)	x1
SDC	x2
Network Status Indicator	x2
Power ON Status Indicator	x1
SGMII	x1
I2C ²	x1
ADC	x2
PCM ²	x1
Main ANT	x1
Diversity ANT	x1
GNSS ANT	x1
JTAG	x1



Packaging

Form Factor:	LCC + LGA
Dimensions:	32x 29 x TBD (mm scale)
Pin Count:	144 Pins
Other FF:	mPCIe

Radio Technology

RAT Used:	LTE Cat 1 with 2G
3GPP Release:	10

Network Speed (Peak Values)

LTE Cat 1:	DL 10Mbps & UL 5 Mbps
GSM:	DL 236.8Kbps & UL 236.8 Kbps

Constellation Coverage

GPS/GLO/GAL/BDS with QZSS
Qualcomm Location Suite Gen8C Lite

Temperature Range

Operating Temperature:	-30 °C to 85 °C
------------------------	-----------------

Power Characteristics

Voltage Range:	3.6 V to 4.5 V
Typical Voltage:	3.8 V

Internet Protocols

TCP(S), HTTP(S), MQTT(S), FTP(S), UDP

Product Variants

Variant	EU Europe	EAJ Europe, Asia & Japan	AN Australia, New Zealand, Taiwan, Japan and South Korea	NA North America	LA Latin America	IN India	WW World wide
256 MB RAM + 256 MB ROM	CQ10-EU-22GNN	CQ10-EAJ-22GNN	CQ10-AN-22GNN	CQ10-NA-22GNN	CQ10-LA-22GNN	CQ10-IN-22GNN	CQ10-WW-22GNN
256 MB RAM + 256 MB ROM + eSIM	CQ10-EU-22GNH	CQ10-EAJ-22GNH	CQ10-AN-22GNH	CQ10-NA-22GNH	CQ10-LA-22GNH	CQ10-IN-22GNH	CQ10-WW-22GNH
256 MB RAM + 512 MB ROM	CQ10-EU-24GNN	CQ10-EAJ-24GNN	CQ10-AN-24GNN	CQ10-NA-24GNN	CQ10-LA-24GNN	CQ10-IN-24GNN	CQ10-WW-24GNN
256 MB RAM + 512 MB ROM + eSIM	CQ10-EU-24GNH	CQ10-EAJ-24GNH	CQ10-AN-24GNH	CQ10-NA-24GNH	CQ10-LA-24GNH	CQ10-IN-24GNH	CQ10-WW-24GNH

¹ Optional

² Needs SDK