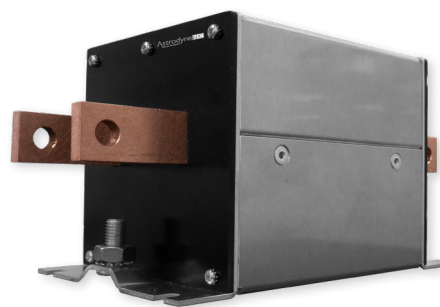


RP695

COMPACT HI-CURRENT DC FILTER FOR EV CHARGERS

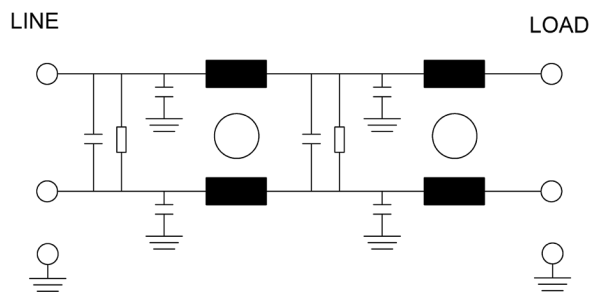
FEATURES

- » **Rated currents include 450A, 600A, 1000A and 1600A**
- » Dual Stage Line Filter
- » Available with **B** (bus bars) option
- » High Voltage Design
- » **Agency Approval to UL60939-3, CSA C22.2 8-13, EN 60939*
- » Y-cap value can be adjusted to fit specification



*Certification in process

ELECTRICAL SCHEMATIC

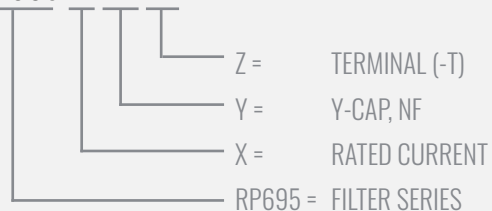


SPECIFICATIONS

MAX. OPERATING VOLTAGE	1500VDC +10%
AMBIENT TEMPERATURE	-25 TO 50°C
CLIMATIC CATEGORY	25/100/21
TERMINALS (-T)	B: BUSBARS 450-600 A (8X25), 1000A (8X40), 1600A (10X60)
TYP. WEIGHT, LBS (KG)	6.4 - 12 (2.9 - 5.45)

HOW TO ORDER

RP695- X - Y - Z



NOTE: USE ANY COMBINATION OF -X (AMPS) WITH ANY -Y VALUES
E.G. **RP695-450-15-B** (450AMPS WITH 15 NF YCAP)

For **X**, **Y**, and **Z** options see product specification table.

HIPOT RATINGS

LINE TO GROUND	6000 VDC
-----------------------	----------

TYPICAL APPLICATIONS

- ✓ DC fast chargers
- ✓ High power rectifiers
- ✓ Inverters
- ✓ Induction charging
- ✓ Industrial chargers
- ✓ Solar

RP695

COMPACT DC FILTER FOR EV CHARGERS

MODEL NO.	RATED CURRENT, A @ 40° C	Y-CAP, nF	TERMINAL OPTIONS				MAX. DIMENSIONS" (MM)		
			(W) INPUT/ OUTPUT	(S) INPUT/ OUTPUT	(C) INPUT/ OUTPUT	(B) INPUT/ OUTPUT	WIDTH	(LENGTH)	HEIGHT
RP695-450-0-B	450	0				✓	4.80" (122)	10.24" (260)	5.04" (128)
RP695-450-15-B	450	15				✓	4.80" (122)	10.24" (260)	5.04" (128)
RP695-450-100-B	450	100				✓	4.80" (122)	10.24" (260)	5.04" (128)
RP695-450-1000-B	450	1000				✓	4.80" (122)	10.24" (260)	5.04" (128)
RP695-450-2000-B	450	2000				✓	4.80" (122)	10.24" (260)	5.04" (128)
RP695-600-0-B	600	0				✓	4.80" (122)	10.24" (260)	5.04" (128)
RP695-600-15-B	600	15				✓	4.80" (122)	10.24" (260)	5.04" (128)
RP695-600-100-B	600	100				✓	4.80" (122)	10.24" (260)	5.04" (128)
RP695-600-1000-B	600	1000				✓	4.80" (122)	10.24" (260)	5.04" (128)
RP695-600-2000-B	600	2000				✓	4.80" (122)	10.24" (260)	5.04" (128)
RP695-1000-0-B	1000	0				✓	5.51" (140)	12.44" (316)	3.94" (100)
RP695-1000-15-B	1000	15				✓	5.51" (140)	12.44" (316)	3.94" (100)
RP695-1000-100-B	1000	100				✓	5.51" (140)	12.44" (316)	3.94" (100)
RP695-1000-1000-B	1000	1000				✓	5.51" (140)	12.44" (316)	3.94" (100)
RP695-1000-2000-B	1000	2000				✓	5.51" (140)	12.44" (316)	3.94" (100)
RP695-1600-0-B	1600	0				✓	5.51" (140)	12.44" (316)	5.12" (130)
RP695-1600-15-B	1600	15				✓	5.51" (140)	12.44" (316)	5.12" (130)
RP695-1600-100-B	1600	100				✓	5.51" (140)	12.44" (316)	5.12" (130)
RP695-1600-1000-B	1600	1000				✓	5.51" (140)	12.44" (316)	5.12" (130)
RP695-1600-2000-B	1600	2000				✓	5.51" (140)	12.44" (316)	5.12" (130)

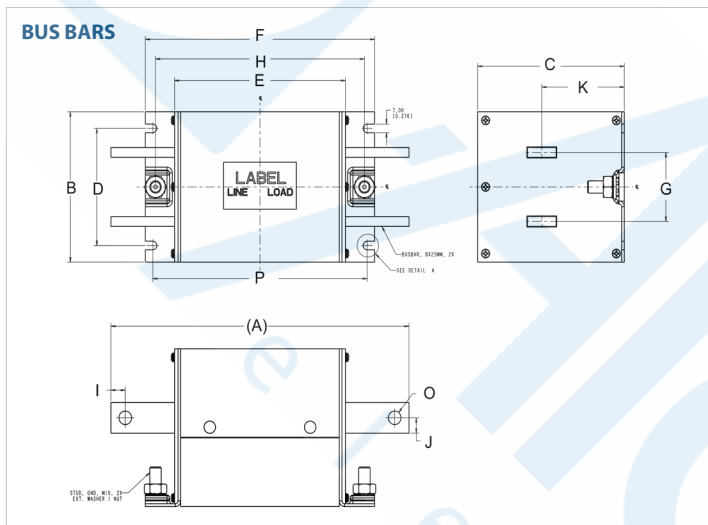
TYPICAL INSERTION LOSS, dB (50/50 Ohm)

Amps	Freq (MHz)	Insertion Loss (dB)					
		0.15	0.5	1.0	10	30	
RP695	CM (dB)	5	31	37	17	10	
	DM (dB)	35	40	30	16	11	

RP695

COMPACT DC FILTER FOR EV CHARGERS

RP695 MECHANICAL OUTLINES (MM)



SERIES	(A)	B	C	D	E	F	G	H	I	J	K	O	P
BUSBARS (450A)	10.24" (260)	4.80" (122)	5.04" (128)	3.74" (95)	5.87" (149)	1.87" (200)	2.21" (56)	7.17" (182.2)	0.492" (12.5)	0.492" (12.5)	2.83" (72)	0.433" (11)	7.36" (187)
BUSBARS (600A)	10.24" (260)	4.8" (122)	5.04" (128)	3.74" (95)	5.87" (149)	7.87" (200)	2.21" (56)	7.17" (182.2)	0.492" (12.5)	0.492" (12.5)	2.83" (72)	0.433" (11)	7.36" (187)
BUSBARS (1000A)	12.44" (316)	5.51" (140)	3.94" (100)	4.49" (114)	7.87" (200)	9.84" (250)	2.21" (56)	9.14" (232.2)	0.492" (12.5)	0.787" (20)	1.94" (49.2)	0.413" (10.5)	8.94" (227)
BUSBARS (1600A)	12.44" (316)	5.51" (140)	5.12" (130)	4.49" (114)	8.66" (220)	10.63" (270)	2.21" (56)	9.93" (252.2)	0.492" (12.5)	1.181" (30)	2.87" (73)	0.413" (10.5)	9.72" (247)