

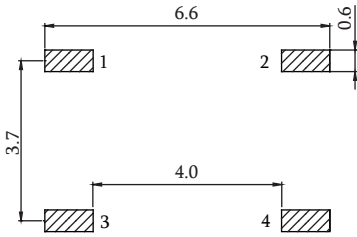
### Tact Switch SMT 180° 04P H=1.5mm

#### Specifications

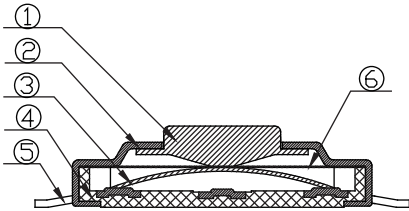
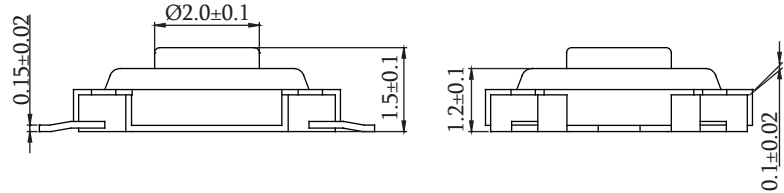
Rating: 50mA 12V DC  
 Insulation Resistance: 100 MΩ Min  
 Withstand Voltage: AC 250 V 1 Minute  
 Life Expectancy: 50,000 Cycles



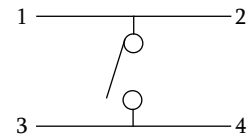
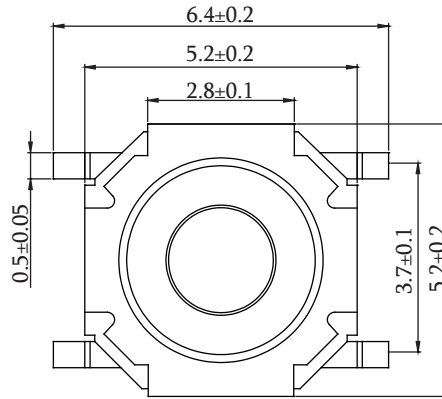
P/N.:64SWT-BB4B217



Recommended PCB Layout  
(PCB TOLERANCE ±0.1)



Number	Part Name	Material	Q'ty
①	Button	PA66	1
②	Cover	H65	1
③	Shrapnel	AG-C5210	1
④	Base	PA66 (Black)	1
⑤	Locker	H65	2
⑥	Film	TI-ST	1

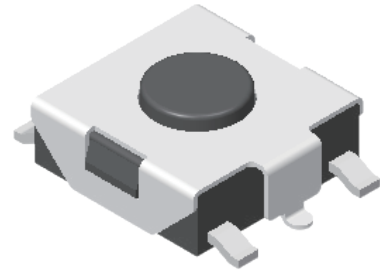


Schematic

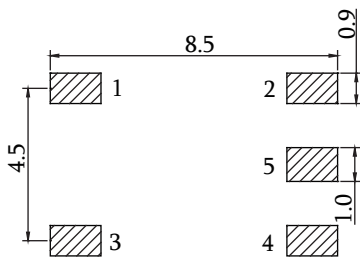
### Tact Switch SMT 180° 05P H=2.55mm

#### Specifications

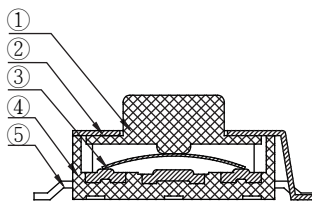
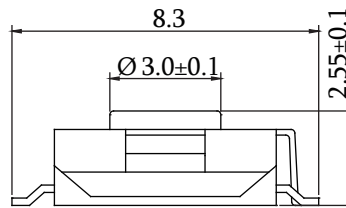
Rating: 50mA 12V DC  
 Insulation Resistance: 100 MΩ Min  
 Withstand Voltage: AC 250 V 1 Minute  
 Life Expectancy: 50,000 Cycles



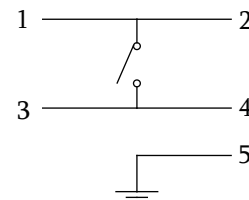
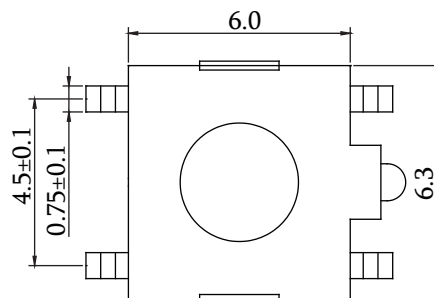
P/N.:64SWT-BB5R190



Recommended PCB Layout  
(PCB TOLERANCE ±0.1)



Number	Part Name	Material	Q'ty
①	Button	PA6T	1
②	Cover	QSN	1
③	Shrapnel	AG-C5210	1
④	Base	PA6T	1
⑤	Locker	H65	2

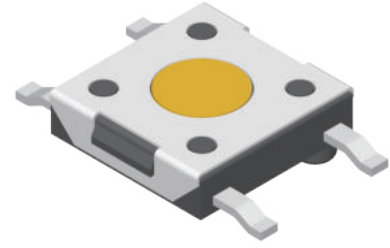


Schematic

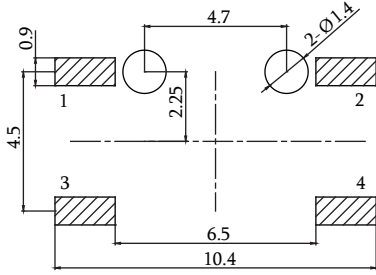
## Tact Switch SMT 180° 04P H=1.6mm

### Specifications

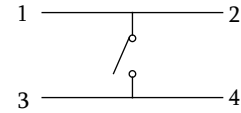
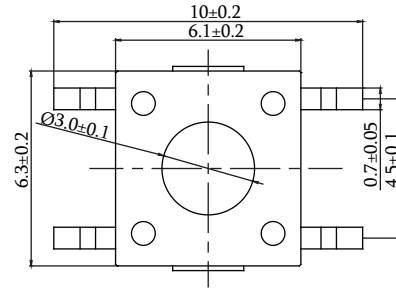
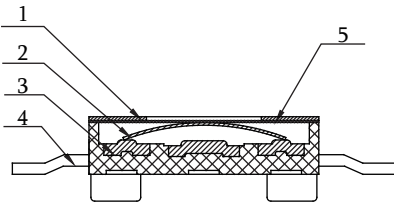
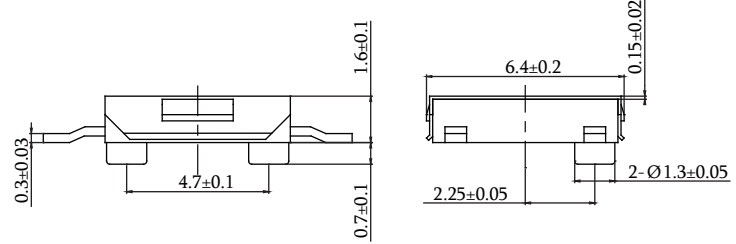
Rating: 50mA 12V DC  
 Insulation Resistance: 100 MΩ Min  
 Withstand Voltage: AC 250 V 1 Minute  
 Life Expectancy: 50,000 Cycles



P/N.:64SWT-BG4B129



Recommended PCB Layout  
(PCB TOLERANCE ±0.1)



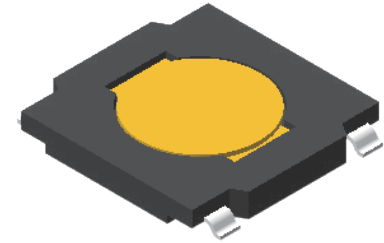
Schematic

Number	Part Name	Material	Q'ty
①	Cover	SUS-301	1
②	Shrapnel	AG-C5210	1
③	Base	PA6T	1
④	Locker	H65	2
⑤	Film	TI-ST	1

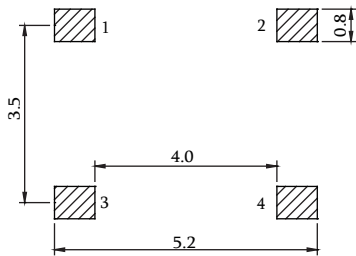
## Tact Switch SMT 180° 04P H=0.6mm

### Specifications

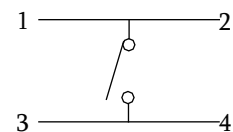
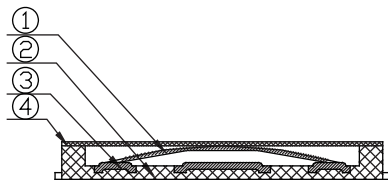
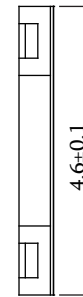
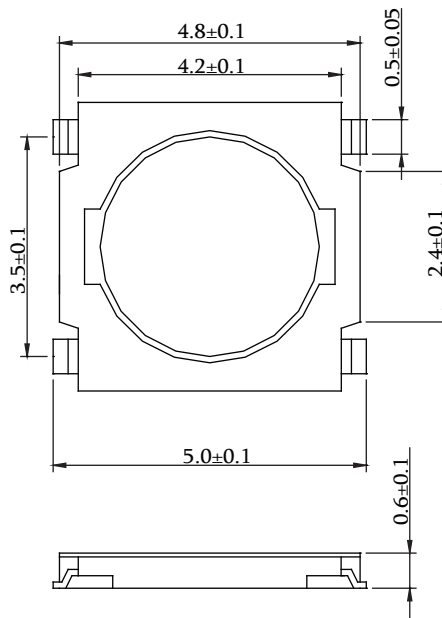
Rating: 50mA 12V DC  
 Insulation Resistance: 100 MΩ Min  
 Withstand Voltage: AC 250 V 1 Minute  
 Life Expectancy: 50,000 Cycles



P/N.:64SWT-BB4B107



Recommended PCB Layout  
(PCB TOLERANCE ±0.1)



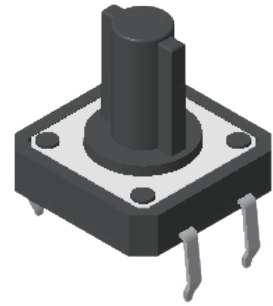
Schematic

Number	Part Name	Material	Q'ty
①	Shrapnel	AgSUS-301	1
②	Base	PA6T	1
③	Cover	QSN	2
④	Film	TI-ST	1

## Tact Switch DIP 180° 04P H=12mm

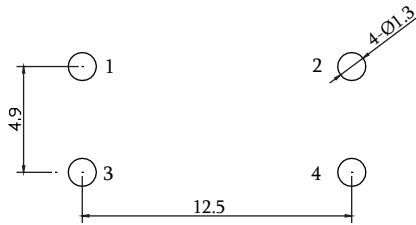
### Specifications

Rating: 50mA 12V DC  
 Insulation Resistance: 100 MΩ Min  
 Withstand Voltage: AC 250 V 1 Minute  
 Life Expectancy: 50,000 Cycles

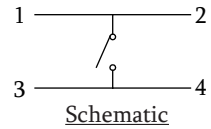
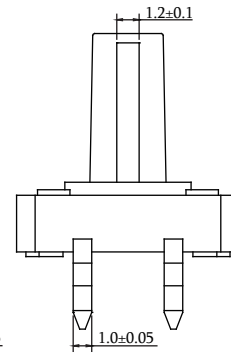
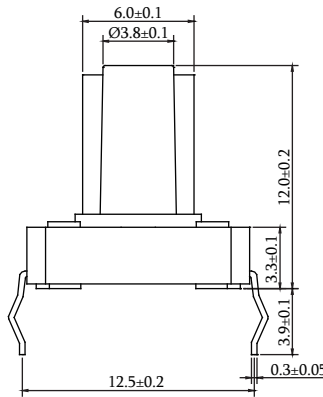
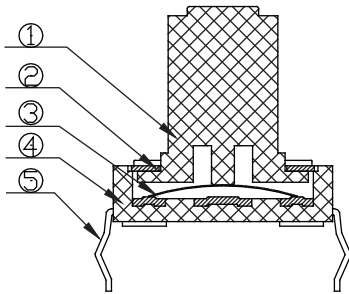
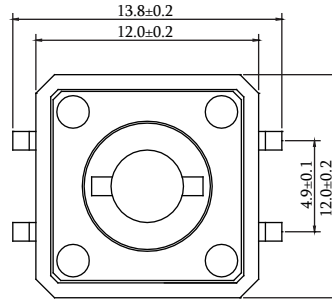


P/N.:64SWT-BB4B2XX

16: 260gf±30gf  
 20: 160gf±30gf



Recommended PCB Layout  
 (PCB TOLERANCE ±0.1)



Number	Part Name	Material	Q'ty
①	Botton	PA66	1
②	Cover	H65	1
③	Shrapnel	AG-C5210	1
④	Base	PA66	1
⑤	Locker	H65	2

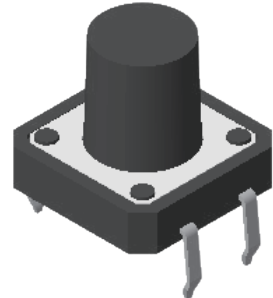
## Tact Switch DIP 180° 04P H=7.5/12mm

### Specifications

Rating: 50mA 12V DC  
 Insulation Resistance: 100 MΩ Min  
 Withstand Voltage: AC 250 V 1 Minute  
 Life Expectancy: 50,000 Cycles

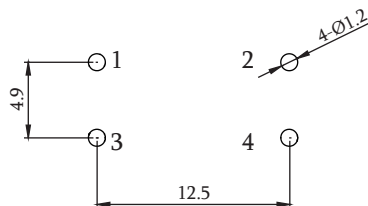
### Table

P/N.	ØA	H	Drive Force
64SWT-BC4B030	6.6	12.0	160gf±30gf
64SWT-BC4B209	6.6	12.0	260gf±30gf
64SWT-BC4B138	6.95	7.5	260gf±50gf

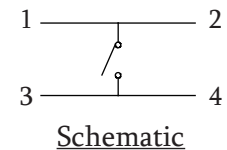
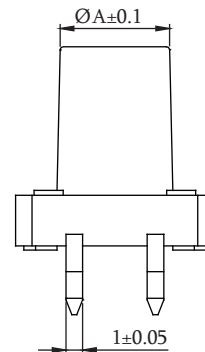
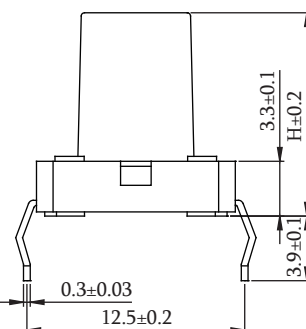
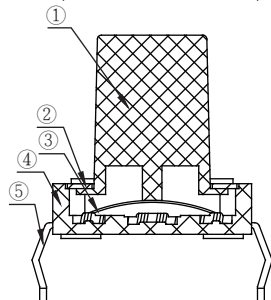
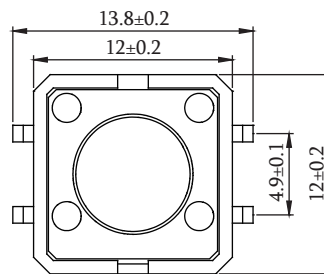


P/N.:64SWT-BC4BXXX

See Table



Recommended PCB Layout  
 (PCB TOLERANCE ±0.1)



Number	Part Name	Material	Q'ty
①	Botton	PA66	1
②	Cover	H65	1
③	Shrapnel	AG-C5210	1
④	Base	PA66	1
⑤	Locker	H65	2

Tact Switch

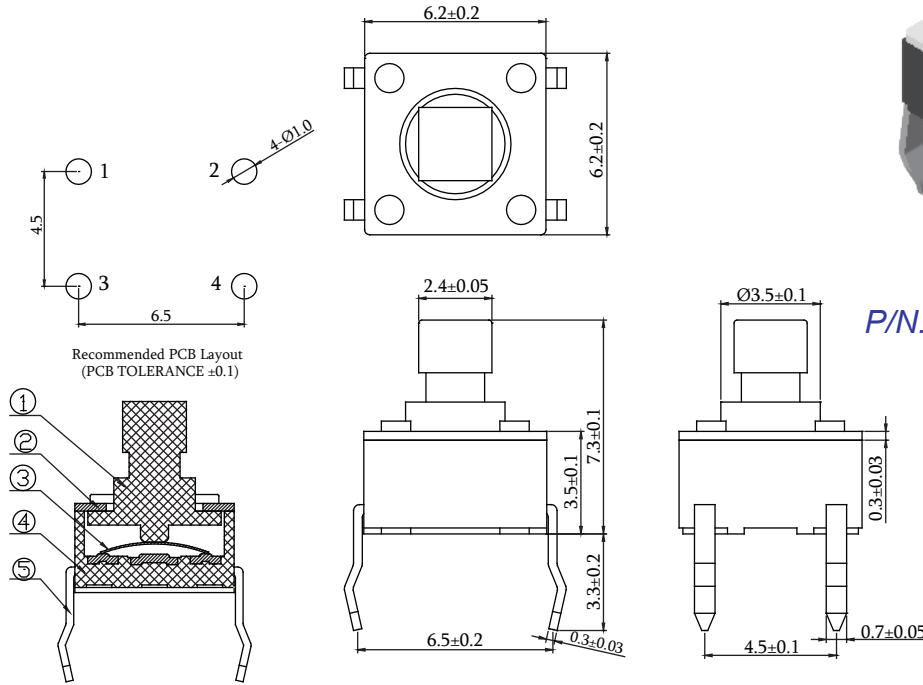
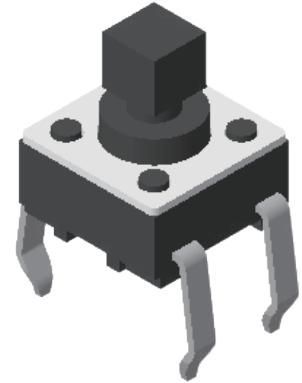


ROHS

## Tact Switch DIP 180° 04P H=7.3mm

### Specifications

Rating: 50mA 12V DC  
 Insulation Resistance: 100 MΩ Min  
 Withstand Voltage: AC 250 V 1 Minute  
 Life Expectancy: 50,000 Cycles



P/N.:64SWT-BC4B112

Number	Part Name	Material	Q'ty
①	Botton	PA66 (Black)	1
②	Cover	H65	1
③	Shrapnel	AG-C5210	1
④	Base	PA66 (Black)	1
⑤	Locker	H65	2

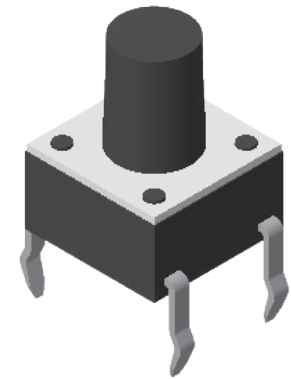
## Tact Switch DIP 180° 04P H=4.3/5.0/7.0/7.3/8.0/9.5/12.5/13.0/14.0mm

### Specifications

Rating: 50mA 12V DC  
 Insulation Resistance: 100 MΩ Min  
 Withstand Voltage: AC 250 V 1 Minute  
 Life Expectancy: 50,000 Cycles

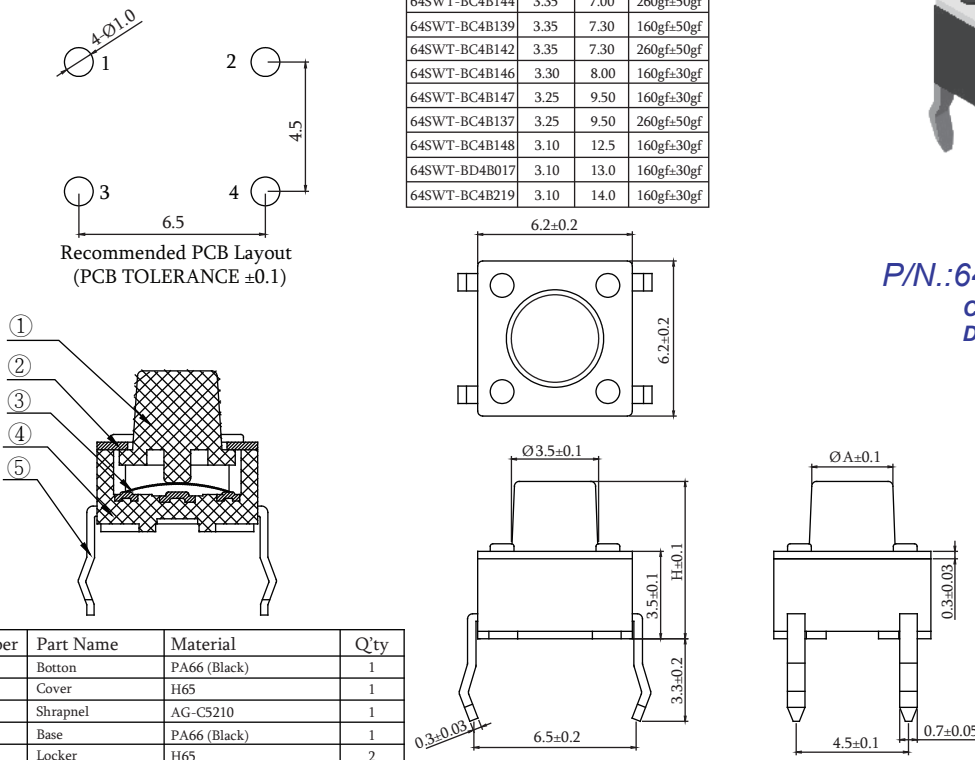
### Table

P/N.	ØA	H	Drive Force
64SWT-BC4B039	---	4.30	160gf±30gf
64SWT-BC4B001	---	5.00	160gf±30gf
64SWT-BC4B154	---	5.00	260gf±50gf
64SWT-BC4B114	3.35	7.00	160gf±30gf
64SWT-BC4B144	3.35	7.00	260gf±50gf
64SWT-BC4B139	3.35	7.30	160gf±50gf
64SWT-BC4B142	3.35	7.30	260gf±50gf
64SWT-BC4B146	3.30	8.00	160gf±30gf
64SWT-BC4B147	3.25	9.50	160gf±30gf
64SWT-BC4B137	3.25	9.50	260gf±50gf
64SWT-BC4B148	3.10	12.5	160gf±30gf
64SWT-BD4B017	3.10	13.0	160gf±30gf
64SWT-BC4B219	3.10	14.0	160gf±30gf



P/N.:64SWT-BX4BXXX

C:Dip/Bag  
 D:Dip/Tube See Table



Number	Part Name	Material	Q'ty
①	Botton	PA66 (Black)	1
②	Cover	H65	1
③	Shrapnel	AG-C5210	1
④	Base	PA66 (Black)	1
⑤	Locker	H65	2

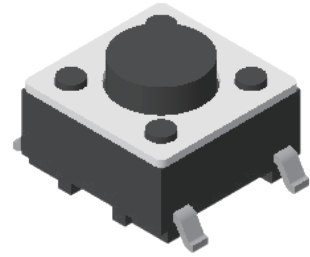
## Tact Switch SMT 180° 04P H=4.3/5.0/7.0mm

### Specifications

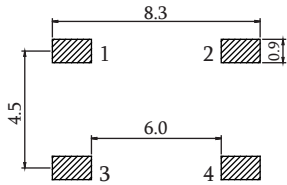
Rating: 50mA 12V DC  
 Insulation Resistance: 100 MΩ Min  
 Withstand Voltage: AC 250 V 1 Minute  
 Life Expectancy: 50,000 Cycles

### Table

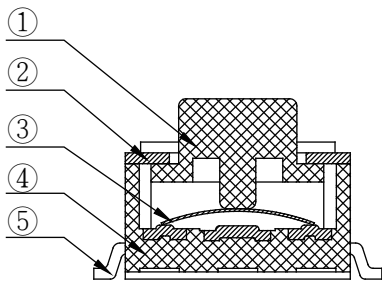
P/N.	ØA	H	Drive Force
64SWT-BX4B031	---	3.3	160gf±30gf
64SWT-BX4B151	---	4.3	260gf±50gf
64SWT-BB4B160	---	5.0	260gf±50gf
64SWT-BX4B028	3.35	7.0	260gf±50gf



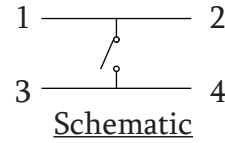
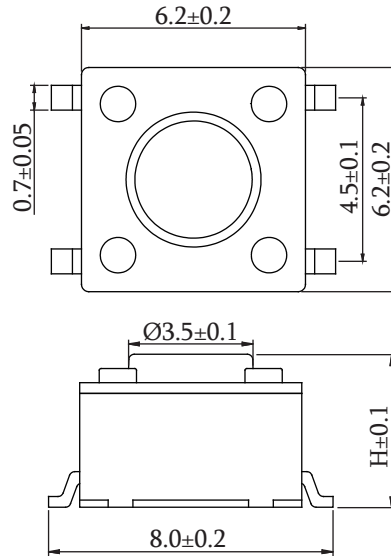
P/N.: 64SWT-BX4BXXX  
 B: SMT/Tape-Reel  
 E: SMT/Bag  
 See Table



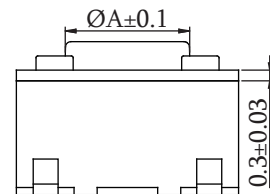
Recommended PCB Layout  
 (PCB TOLERANCE ±0.1)



Number	Part Name	Material	Q'ty
①	Bottom	PA6T	1
②	Cover	H65	1
③	Shrapnel	AG-C5210	1
④	Base	PA6T	1
⑤	Locker	H65	2



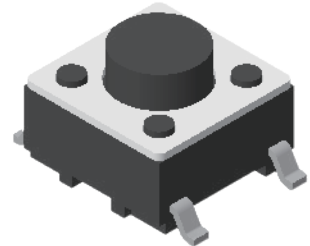
Schematic



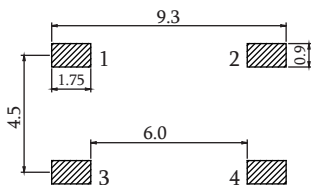
## Tact Switch SMT 180° 04P H=5.0mm

### Specifications

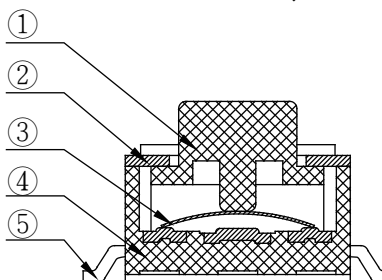
Rating: 50mA 12V DC  
 Insulation Resistance: 100 MΩ Min  
 Withstand Voltage: AC 250 V 1 Minute  
 Life Expectancy: 50,000 Cycles



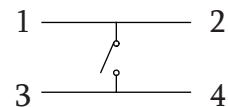
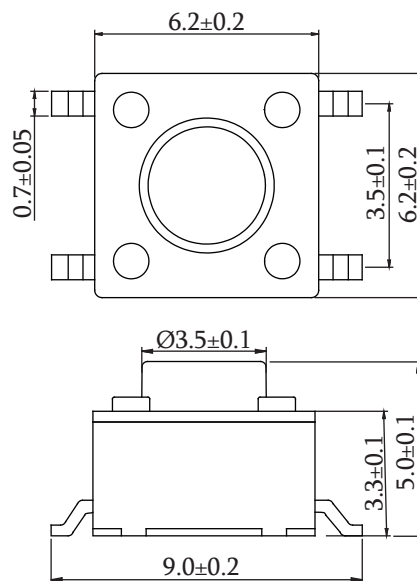
P/N.: 64SWT-BE4B034



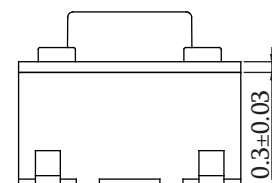
Recommended PCB Layout



Number	Part Name	Material	Q'ty
①	Bottom	PA6T	1
②	Cover	H65	1
③	Shrapnel	AG-C5210	1
④	Base	PA6T	1
⑤	Locker	H65	2



Schematic



Tact Switch



ROHS

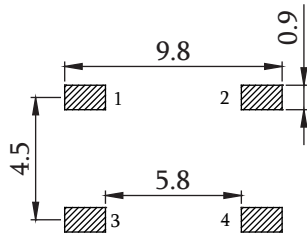
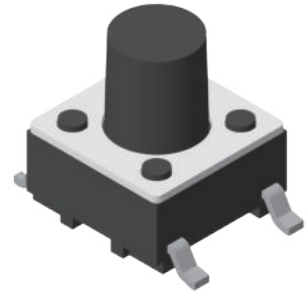
## Tact Switch SMT 180° 04P H=4.3/7.0mm

### Specifications

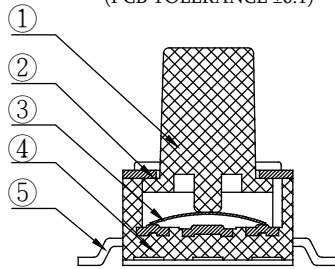
Rating: 50mA 12V DC  
 Insulation Resistance: 100 MΩ Min  
 Withstand Voltage: AC 250 V 1 Minute  
 Life Expectancy: 50,000 Cycles

### Table

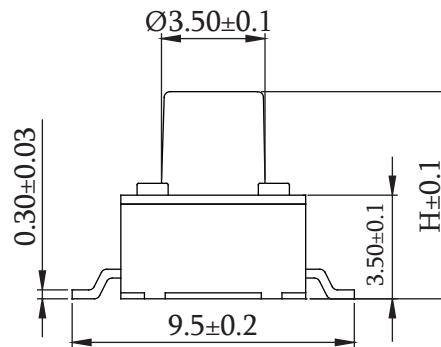
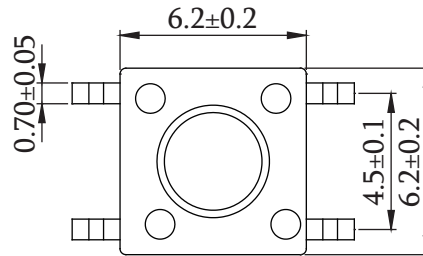
P/N.	ØA	H	Drive Force
64SWT-BX4B038	---	4.3	160gf±30gf
64SWT-BX4B158	3.35	7.0	260gf±50gf



Recommended PCB Layout  
(PCB TOLERANCE ±0.1)

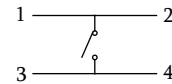


Number	Part Name	Material	Q'ty
①	Botton	PA6T (Black)	1
②	Cover	H65	1
③	Shrapnel	AG-C5210	1
④	Base	PA6T (Black)	1
⑤	Locker	H65	2

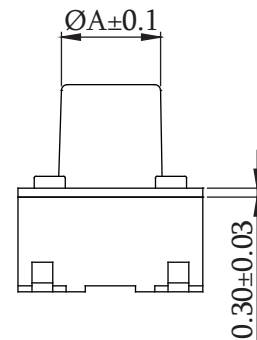


P/N.: 64SWT-BX4BXXX  
 B: SMT/Tape-Reel  
 E: SMT/Bag

See Table



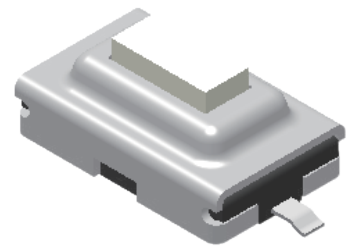
Schematic



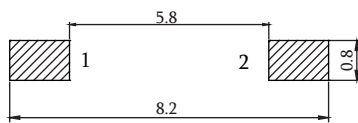
## Tact Switch SMT 180° 02P H=2.5mm

### Specifications

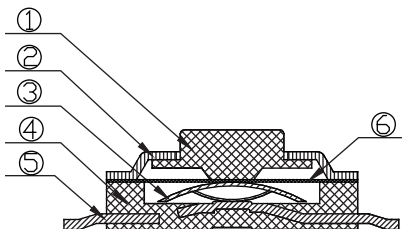
Rating: 50mA 12V DC  
 Insulation Resistance: 100 MΩ Min  
 Withstand Voltage: AC 250 V 1 Minute  
 Life Expectancy: 20,000 Cycles



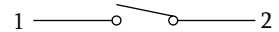
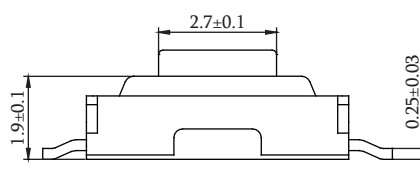
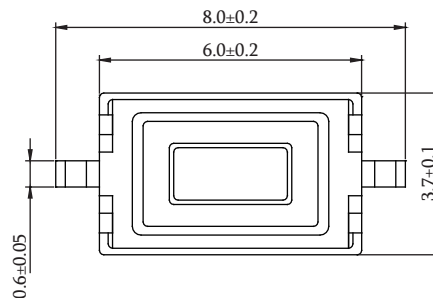
P/N.: 64SWT-BB2B172



Recommended PCB Layout  
(PCB TOLERANCE ±0.1)



Number	Part Name	Material	Q'ty
①	Botton	PA6T	1
②	Cover	H65	1
③	Shrapnel	Ag-SUS301	1
④	Base	PA6T	1
⑤	Locker	QSN	2



Schematic

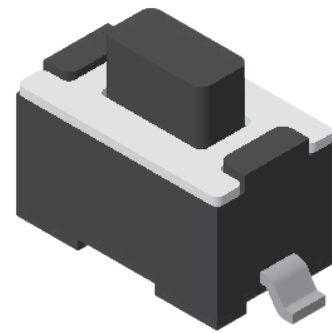
### Tact Switch SMT 180° 02P H=5.0mm

#### Specifications

Rating: 50mA 12V DC  
 Insulation Resistance: 100 MΩ Min  
 Withstand Voltage: AC 250 V 1 Minute  
 Life Expectancy: 30,000 Cycles

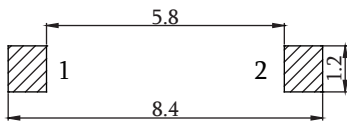
#### Table

P/N.	Drive Force
64SWT-BB2B092	160gf±30gf
64SWT-BB2B123	260gf±50gf

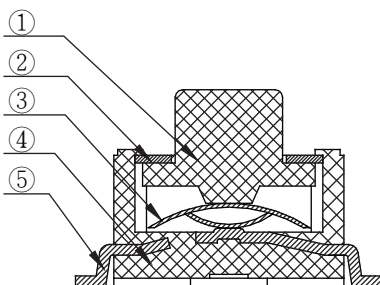


P/N.:64SWT-BB2BXXX

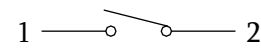
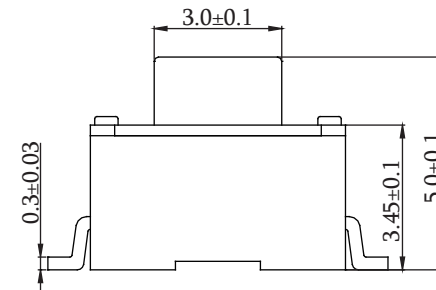
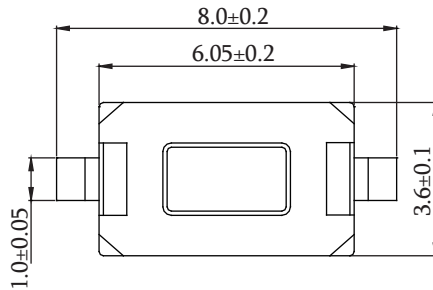
See Table



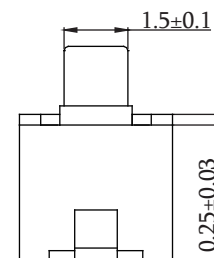
Recommended PCB Layout  
(PCB TOLERANCE ±0.1)



Number	Part Name	Material	Q'ty
①	Botton	PA6T	1
②	Cover	QSN	1
③	Shrapnel	AgSUS-301	1
④	Base	PA6T	1
⑤	Locker	H65	2



Schematic



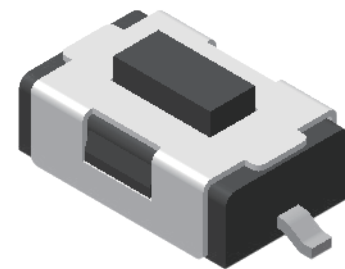
### Tact Switch SMT 180° 02P H=2.6mm

#### Specifications

Rating: 50mA 12V DC  
 Insulation Resistance: 100 MΩ Min  
 Withstand Voltage: AC 250 V 1 Minute  
 Life Expectancy: 30,000 Cycles

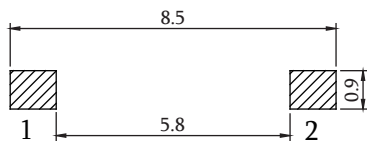
#### Table

P/N.	Drive Force	Botton Color
64SWT-BB2B121	180gf±30gf	Black
64SWT-BB2R136	260gf±50gf	Red

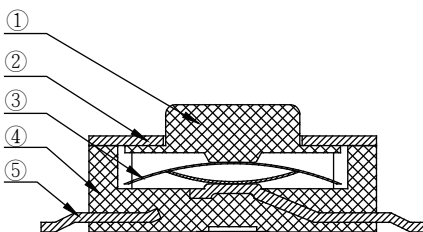


P/N.:64SWT-BB2XXXX

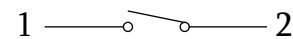
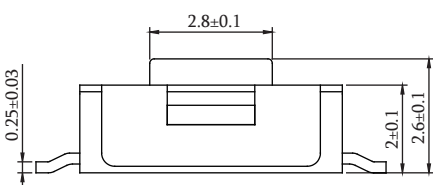
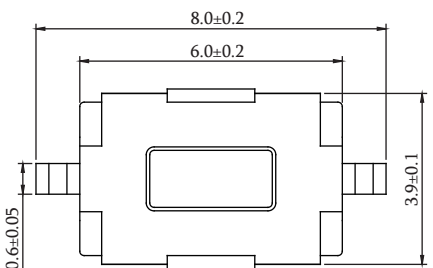
See Table



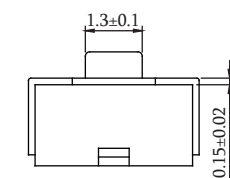
Recommended PCB Layout  
(PCB TOLERANCE ±0.1)



Number	Part Name	Material	Q'ty
①	Botton	PA6T	1
②	Cover	QSN	1
③	Shrapnel	AgSUS-301	1
④	Base	PA6T	1
⑤	Locker	QSN	2



Schematic



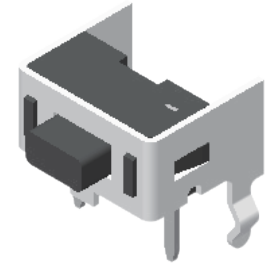
## Tact Switch DIP 90° 04P H=4.3mm

### Specifications

Rating: 50mA 12V DC  
 Insulation Resistance: 100 MΩ Min  
 Withstand Voltage: AC 250 V 1 Minute  
 Life Expectancy: 30,000 Cycles

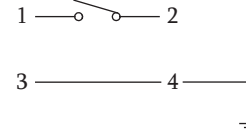
### Table

P/N.	Drive Force	Bottom Color
64SWT-BC4B066	160gf±30gf	Black
64SWT-BC4Z091	260gf±50gf	White

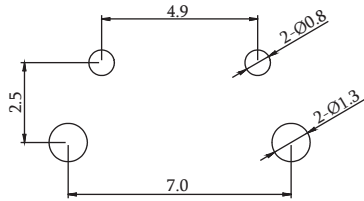


P/N.: 64SWT-BC4XXXX

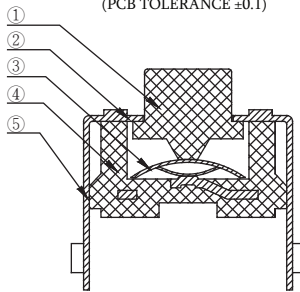
See Table



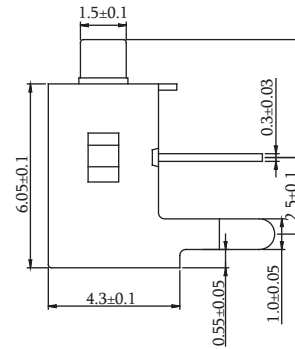
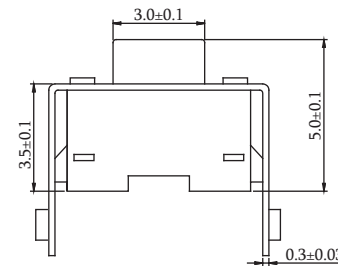
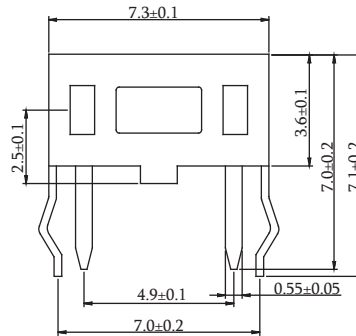
### Schematic



Recommended PCB Layout  
(PCB TOLERANCE ±0.1)



Number	Part Name	Material	Q'ty
①	Bottom	PA66	1
②	Cover	H65	1
③	Shrapnel	AgSUS-301	1
④	Base	PA66	1
⑤	Locker	H65	2



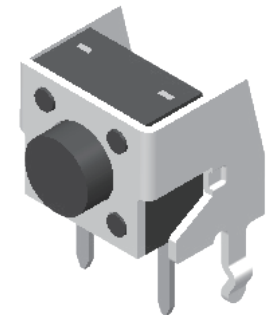
## Tact Switch DIP 90° 04P H=7.0mm

### Specifications

Rating: 50mA 12V DC  
 Insulation Resistance: 100 MΩ Min  
 Withstand Voltage: AC 250 V 1 Minute  
 Life Expectancy: 50,000 Cycles

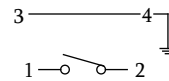
### Table

P/N.	∅A	H1	H2	Drive Force
64SWT-BC4B195	---	3.85	---	260gf±50gf
64SWT-BC4B113	3.35	5.85	7.00	160gf±30gf
64SWT-BC4B155	3.25	8.35	9.50	160gf±30gf

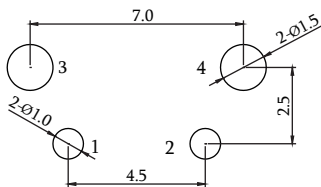


P/N.: 64SWT-BC4BXXX

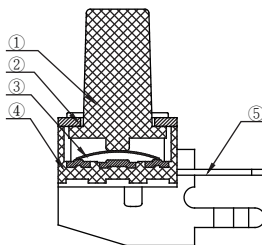
See Table



### Schematic



Recommended PCB Layout  
(PCB TOLERANCE ±0.1)



Number	Part Name	Material	Q'ty
①	Bottom	PA66	1
②	Cover	Fe	1
③	Shrapnel	AG-CS210	1
④	Base	PA66	1
⑤	Locker	H65	2

