

EdgeGO[®]

A Dynamic, Edge-Native, Remote Device Management Software For All Edge Devices

Key Features

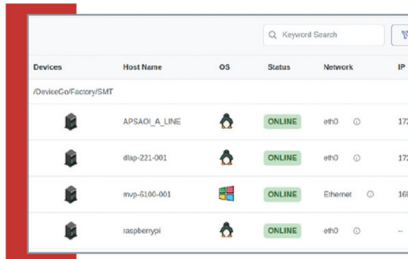
- Device Management Anytime, Anywhere, 24/7
- Stay Informed by Real-time Alerts
- Execute Scripts and Deploy Packages with Just a Few Clicks
- Customizable Visual Dashboard at a Glance
- Protect User Devices with Advanced Edge Security Measures
- Exclusive Features for ADLINK Device Users



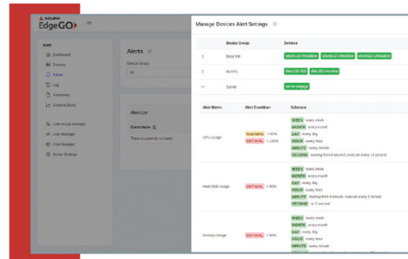
Feature Overview

EdgeGO [®] - Remote Device Management For All Edge Devices	
Remote Device Management	<ul style="list-style-type: none"> • Supervise devices and user groups easily with EdgeGO's web user interface • Reboot, shut down, terminate, and take screenshots remotely, without any location restrictions • Access documents from anywhere with a single click using the remote desktop feature • iAPPs manager for ADLINK and third-party applications
Real-Time Notifications	<ul style="list-style-type: none"> • Rule-based engine to enable users to schedule alerts based on specific dates and times, thresholds, or conditions • Users can receive alerts through their preferred platform, including email, LINE, Teams, and more
Script and Package Deployment	<ul style="list-style-type: none"> • Easy upload and execute script(s) or package(s) • A repository of scripts and packages for convenient monitoring, upload, and reuse
Edge Security	<ul style="list-style-type: none"> • Offer on-premise or off-premise server setup • Guarantee secure connections between server and agents • Secure device onboarding process • Allow users to lock or unlock USB ports of their selected devices • Enable Two-factor authentication
Customizable Dashboards	<ul style="list-style-type: none"> • Customize dynamic dashboards with graphs, statistics, and charts to meet user's specific needs • Showing custom data imported from third-party add-ons like Grafana
Exclusive ADLINK Features	<ul style="list-style-type: none"> • Embedded Smart Embedded Management Agent (SEMA) to collect local hardware data • ASD+ SSDs lifetime estimation based on user work cycles

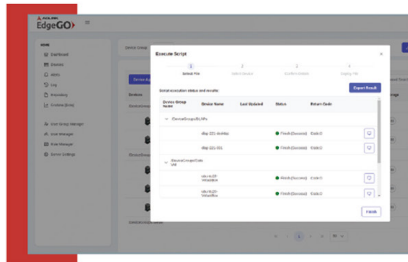
Web-Based User Interfaces



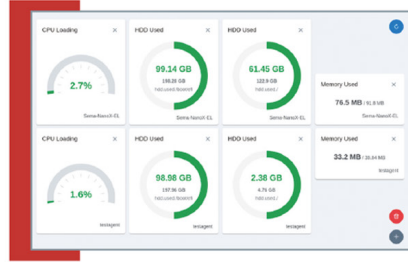
Device Management



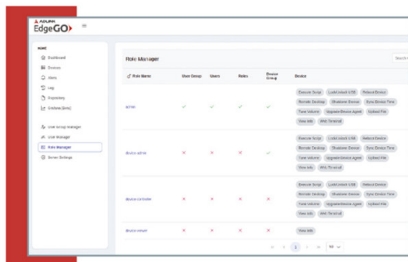
Real-time Notifications



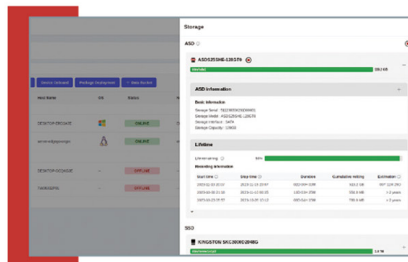
Script and Package Deployment



Customizable Dashboards

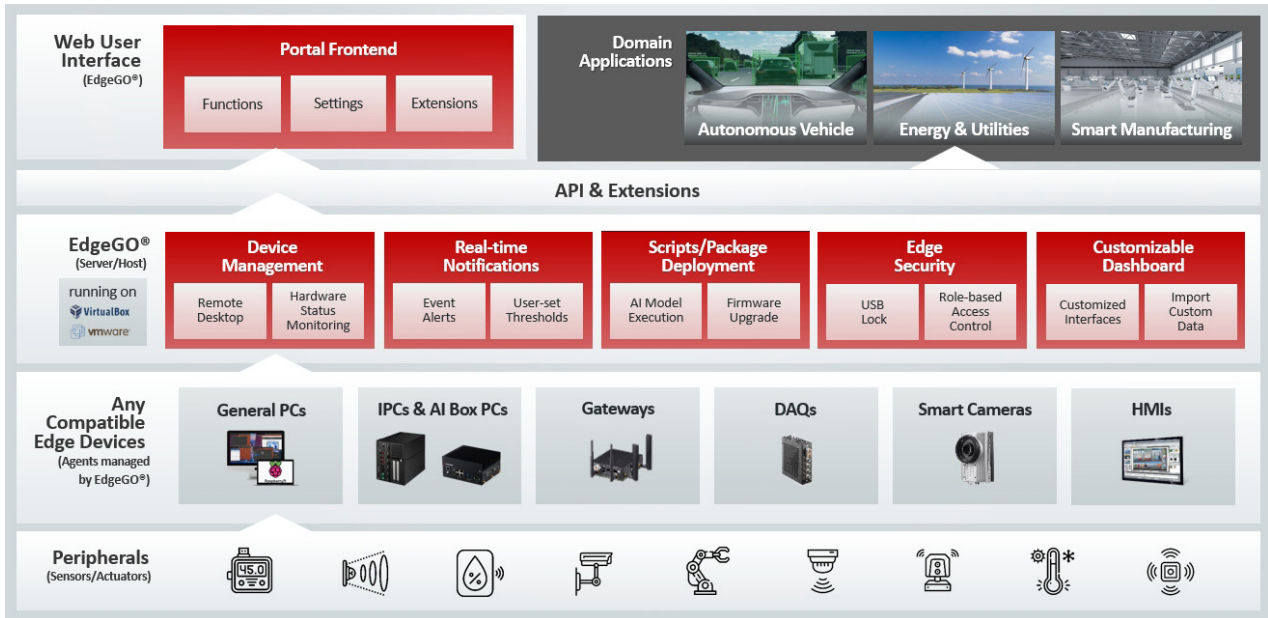


Edge Security



Exclusive ADLINK Features

Service Architecture



System Requirement

Server (EdgeGO®)	
Processor	x64 systems with Intel® Core™ i5 or higher
RAM	8GB or more
OS (Supports OVA Files)	Windows 10 and 11
	Ubuntu 20.04 or higher
	Debian 10
	VirtualBox VMware
Agent (EGiLink+)	
Processor	x64 systems for Windows and Ubuntu arm64 systems for Raspberry Pi
RAM	1GB or more
OS	Windows 10 and 11
	Ubuntu 18.04, 20.04, and 22.04 LTS
	Raspbian 11 and 12

Getting Started With EdgeGO®

Start your [free trial](#) today! For more information, please refer to the [user manual](#) or reach out to our support team.



Singel 3 | B-2550 Kontich | Belgium | Tel. +32 (0)3 458 30 33
 info@alcom.be | www.alcom.be
 Rivium 1e straat 52 | 2909 LE Capelle aan den IJssel | The Netherlands
 Tel. +31 (0)10 288 25 00 | info@alcom.nl | www.alcom.nl