



LoRaWAN[®] Wireless Door/ Window Sensors

Radio Bridge LoRaWAN[®] Wireless Door/Window Sensors detect the proximity or lack of proximity of a magnet to wirelessly alert the user of a change.

Applications for these wireless proximity door/window sensors include open/close events, secure storage for cabinets and lock boxes, and general proximity to detect a magnet near the sensor.

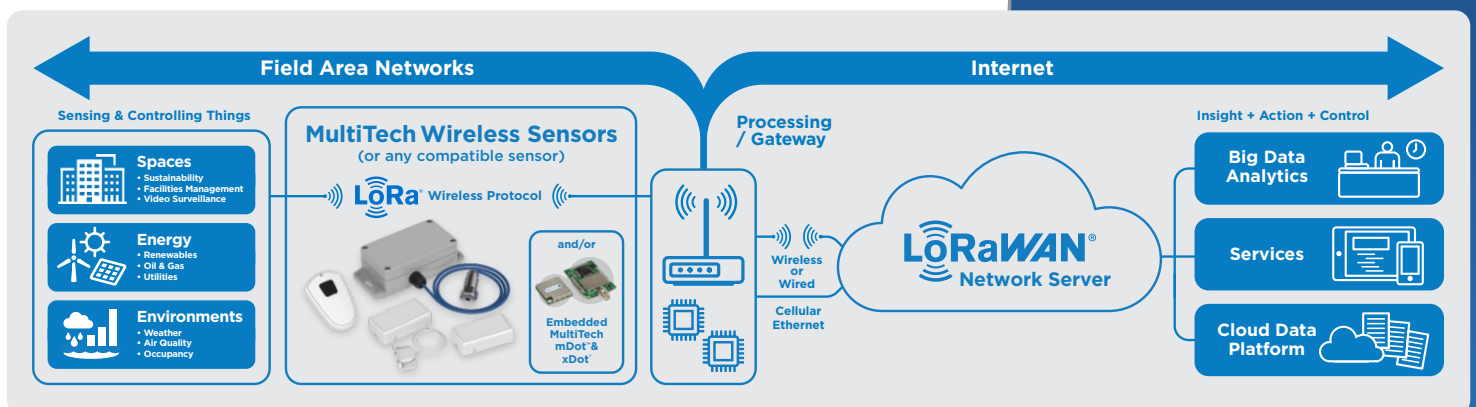
LoRaWAN wireless sensors make it easy to connect sensor data to your applications. Best in class RF performance enables sensors to work in environments where others fail. Advanced power management provides maximum battery life, improved LoRaWAN network performance and capacity. Sensors can be configured over the air, before and after installation. This enables them to be optimized, for the most optimum reporting intervals or thresholds to provide the data that is important to your application, when you need it.

BENEFITS

- Open architecture for flexible integration with any LoRaWAN network
- Also available is an optional web-based service for provisioning, monitoring, and configuration of sensors in the field
- Seamlessly integrate with any LoRaWAN gateway in addition to the MultiTech portfolio of LoRaWAN gateways

FEATURES

- Based on LoRaWAN wireless technology
- Optimized Radio performance by balancing performance with long battery life and excellent network performance
- Very long range, up to several miles
- Excellent wireless penetration through structures such as walls and floors
- Automatic error reporting through supervisory messages
- Over the air configuration
- Seamless integration into any cloud service. BACnet integration through MultiTech Gateways.



LoRaWAN® Wireless IoT Sensors

Long-range wireless sensors for the Internet of Things (IoT)

Radio Bridge LoRaWAN® wireless sensors, utilize the LoRaWAN wireless standard and are all engineered for long-range, low cost, and extended battery life applications. These sensors deliver critical asset information so you understand what's happening and can react quickly when needed.

Sensor / Item

Description

Applications



LoRaWAN Door/Window Sensor for Indoor Use

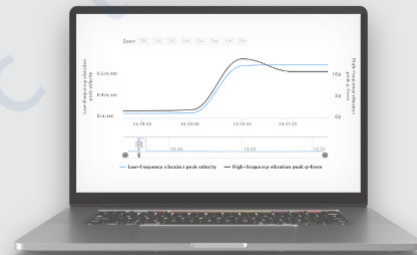
The door/window sensor uses a magnet to detect open/close events for doors, windows, or other applications that use a magnet to detect close proximity.

- Building / Commercial Property
- Retail, Restaurants
- Fridges / Freezer
- Garage Doors

Radio Bridge Console

The Radio Bridge Console is an optional web-based fully integrated solution that provides sensor configuration, LoRaWAN Network Server management, configurable alerts and notifications. Sensor visualization enables you to deploy and validate your sensor-to-cloud solution immediately, without spending weeks or months on system integration efforts.

LEARN MORE: radiobridge.com/software/device-management-console



SENSOR SPECIFICATIONS OVERVIEW

Item / Type	Description	
LoRaWAN Region	US/Canada	Europe/United Kingdom
Sensor Type	LoRaWAN Door/Window (Indoor Use)	LoRaWAN Door/Window (Indoor Use)
Part Number	RBS3010NA01BN00	RBS3010EU01BN00
LoRa® Wireless		
Frequency Band (MHz)	902-928	863-870
Channel Plan	US915	EU868
Protocol	LoRaWAN compliant	
Antenna	Peak (typical) antenna gain is 0.8dBi for US/Canada and 0dBi for EU/UK	
Power		
Battery Powered	Yes	
Battery Type/ Qty	CR123A x 1	
User Replaceable	Yes	
Battery Life	Optimized solution: up to 10 years battery life (https://radiobridge.com/documents/Sensor%20Battery%20Estimator.xlsx)	
Physical Description		
Physical Dimensions (LxWxH)	2.81" x 1.46" x 0.75" (71.37mm x 37.08mm x 19.05mm) Magnet: 1.25" x 0.7" x 0.5" (31.75 x 1.77mm x 12.7mm)	
Physical Weight	44g including magnet and magnet enclosure	
Enclosure Type	ABS Plastic, IP30, indoor rated	
Mounting	Double Sided Tape or Screw	
Range	States (Open & Close) with customizable state timing threshold	
Resolution	Boolean State (Programmable setting time for open or close)	
Accuracy	10-15mm Detection Distance	
Environmental		
Operating Temperature	-40 to +50°C	
Operating Humidity	10 - 90% (non-condensing)	
Storage Temperature	-40° to +45°C (Battery life may be impacted due to temperature fluctuation)	
Certifications		
Compliance	FCC/IC, REACH, ROHS	CE, RED, UKCA, REACH, ROHS
Warranty	2-Years / www.multitech.com/legal/warranty	

See user guide for more information.

ORDERING INFORMATION

MultiTech Sensors

Model	Description	Region
RBS3010NA01BN00	LoRaWAN Door/Window Sensor for Indoor Use (1 Pk)	US/Canada
RBS3010EU01BN00	LoRaWAN Door/Window Sensor for Indoor Use (1 Pk)	EU & UK

Features and specifications are subject to change without notice.

Trademarks and Registered Trademarks: MultiTech and the MultiTech logo, Radio Bridge: Multi-Tech Systems, Inc. All other products and technologies are the trademarks or registered trademarks of their respective holders.

2024-03 • 86002276 • © 2024 Multi-Tech Systems, Inc. All rights reserved.



Singel 3 | B-2550 Kontich | Belgium | Tel. +32 (0)3 458 30 33 | info@alcom.be | www.alcom.be
Rivium 1e straat 52 | 2909 LE Capelle aan den IJssel | The Netherlands | Tel. +31 (0)10 288 25 00

info@alcom.nl | www.alcom.nl

Services & Warranty

MultiTech's comprehensive Support Services programs offer a full array of options to suit your specific needs. These services are aimed at protecting your investment, extending the life of your solution or product, and reducing total cost of ownership. Our seasoned technical experts, with an average tenure of more than 10 years, can walk you through smooth installations, troubleshoot issues and help you with configurations.

Technical Support Services

At MultiTech, we're committed to providing you personalized attention and quality service while providing you a quick response to your product support needs. We have several options of support for you to choose from.

For additional information on Support Services as well as other service offerings, please contact your MultiTech representative or visit www.multitech.com/support.go

World Headquarters

Multi-Tech Systems, Inc.
2205 Woodale Drive
Mounds View, MN 55112 U.S.A.
Tel: 763-785-3500
Email: sales@multitech.com
www.multitech.com

