

Zero8

0.8 mm SMT for Board-to-Board Applications

Key Features

Types	see overview
Pitch	0.8 mm
Termination technology	SMT
Data transfer rate	up to 16 Gbps
Durability	500 mating cycles
Operational current	max. 1.7 A at 20°C (52 pins)
Approvals	UL, RoHS compliant

Applications

Board-to-Board (mezzanine) from 6 mm up to 21 mm

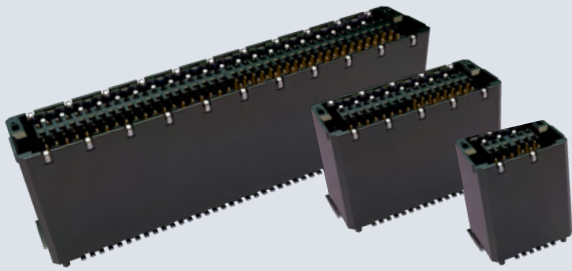
Parallel and perpendicular connection

Shielded and unshielded versions

Scale

Characteristics

- Versatile through different types, contact numbers and board-to-board distances
- Small through dense pitch
- Shielding for better EMC properties
- HighSpeed up to 16 Gbps



Overview Zero8

Type		Height	Number of pins	Mating configuration
	Plug Socket low-profile	shielded 1.15 mm 4.85 mm	12 ... 80	Parallel Perpendicular
	Plug Socket mid-profile	shielded 2.65 mm 7.85 mm	12 ... 80	Parallel Perpendicular
	Plug Socket (coming soon) high-profile	shielded 7.15 mm 10.85 mm	12 ... 80	Parallel Perpendicular
	Plug x-high	shielded 8.65 mm	12 ... 80	Parallel Perpendicular
	Plug Socket angled	shielded	12 ... 80	Horizontal Perpendicular
	Plug Socket low-profile	unshielded 1.15 mm 4.85 mm	12 ... 80	Parallel Perpendicular
	Plug Socket mid-profile	unshielded 2.65 mm 7.85 mm	12 ... 80	Parallel Perpendicular
	Plug Socket (coming soon) high-profile	unshielded 7.15 mm 10.85 mm	12 ... 80	Parallel Perpendicular
	Plug x-high	unshielded 8.65 mm	12 ... 80	Parallel Perpendicular
	Plug Socket angled	unshielded	12 ... 80	Horizontal Perpendicular