

LTE Module FG621-EA



SL8563

300Mbps DL

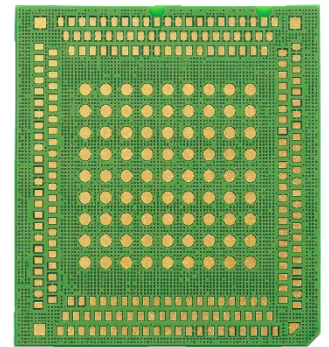
50Mbps UL

EMEA/APAC/Australia

FIBOCOM FG621-EA is a LGA form factor LTE wireless communication module which supports LTE-FDD/ LTE-TDD/WCDMA.

The highest speed can reach Cat 6 300Mbps DL and 50Mbps UL .

FG621-EA can cover EMEA/APAC/Australia mobile network. It can be widely used in CPE、 STB and gateway industry.



Copyright©FibocomWirelessInc. | Subject to changes in technology, design and availability | E-mail: market@fibocom.com | Tel: +86 755-2673 3555

LTE Module FG621-EA



Product Features

- Chipset: SL8563
- LTE FDD: B1/3/5/7/8/20/28
- LTE TDD: B38/40/41(100MHz)
- WCDMA/HSPA+: B1/3/5/8
- 2CA Combo:
 - B1+B1/3/5/7/8/20/28
 - B3+B3/5/7/8/20/28
 - B5+B7
 - B7+B7/8/20/28
 - B38+B38
 - B40+B40
 - B41+B41(100MHz)
- Factor: LGA
- Size: 37.0*39.5*2.80mm
- Operating Voltage: 3.4V~4.3V, Typical 3.8V
- Temperature:
 - Normal Operation: -30~+75°C
 - Extended operation: -40~+85°C
 - Storage Temperature: -40~+85°C
- AT Command Set: 3GPP TS 27.007 and 27.005, proprietary FIBOCOM AT commands
- TX Power:
 - WCDMA: 23.5dBm±1dBm
 - LTE FDD: 23.0dBm±1dBm
 - LTE TDD: 23.0dBm±1dBm

Data

- LTE FDD : 300Mbps DL/50Mbps UL
- LTE TDD : 260Mbps DL/30Mbps UL
- WCDMA: 384 kbps DL/384 kbps UL
- DC-HSPA+: 42Mbps DL/11Mbps UL

Function

- SMS : MO/MT Text and PDU modes
- DHCP/TCP*/UDP*/HTTP(S)*/FTP(S)*/IPV4/IPV6/SSL*/ECM/NCM/RNDIS
- DFOTA
- VoLTE/PCM/BIP/FFS*/LBS*
- Cell ID

Driver

- Linux/ Android*/Windows*

Interface

- SIM Card: 1.8V/3.0V
- USB2.0
- I2C
- PCM/Digital Audio
- GPIO
- SPI
- SDIO
- Antenna : Main/Div

Region

EMEA/APAC/Australia

Note: * = Planning

Approval

- Industry: HF/GCF
- Regulation:RoHS/CE//RCM/JATE*/TELEC*/KC*
- Operator:
 - DT*/BT*/H3G*/EE*/Telefonica*/Vodafone*/Swisscom*/Optus*/DCM*/SFB*/KDDI*/SKT*/KT*/LG U+*

Copyright©FibocomWirelessInc. | Subject to changes in technology, design and availability | E-mail: market@fibocom.com | Tel: +86 755-2673 3555

LTE Module FG621-EA



2CA Combo list

1C	3C	5B	7C	8B	38C	40C	41C
1A-1A	3B	5A-5A	7B			40A-40A	41A-41A
1A-3A	3A-3A	5A-7A	7A-7A				
1A-5A	3A-5A		7A-8A				
1A-7A	3A-7A		7A-20A				
1A-8A	3A-8A		7A-28A				
1A-20A	3A-20A						
1A-28A	3A-28A						

Remark: The above inter-band combination represents two combinations. For example 1A-3A represents CA_1A-3A and CA_3A-1A