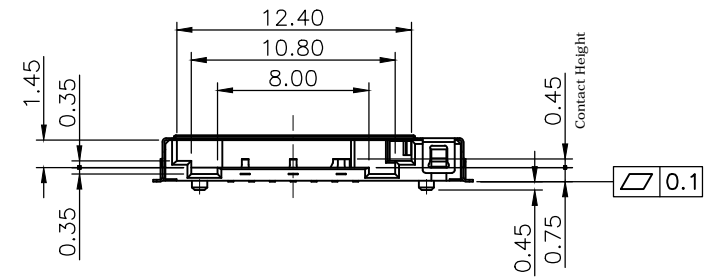
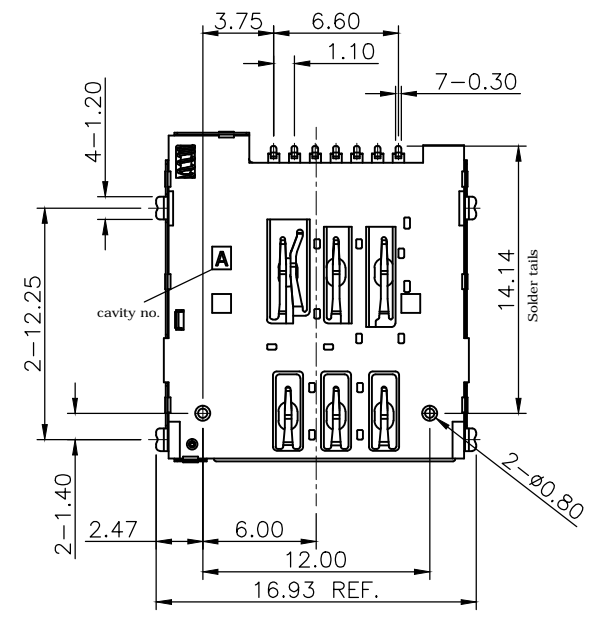
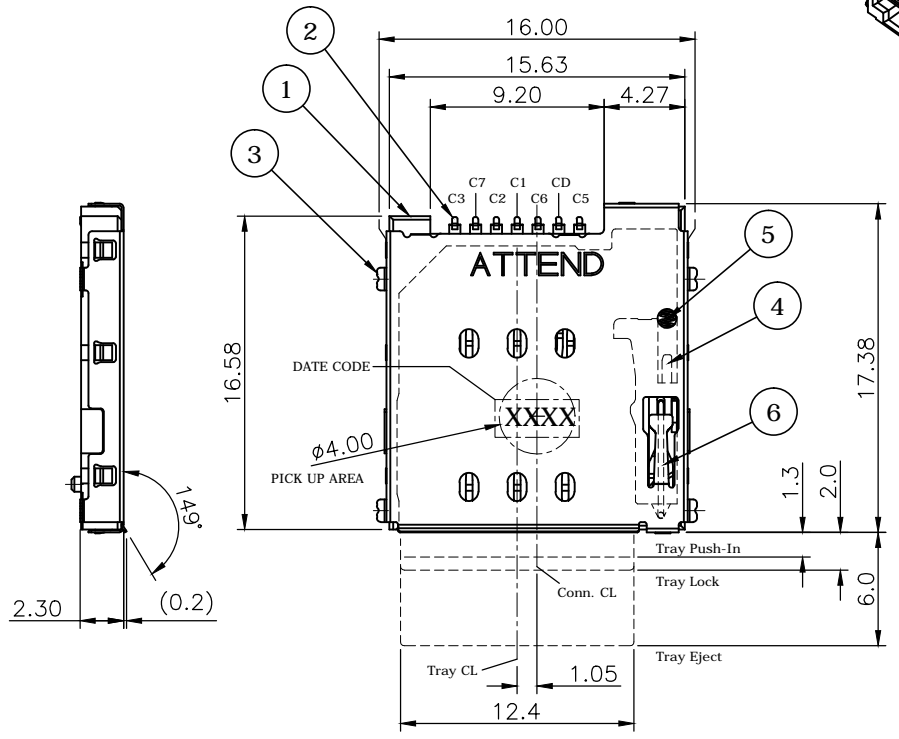
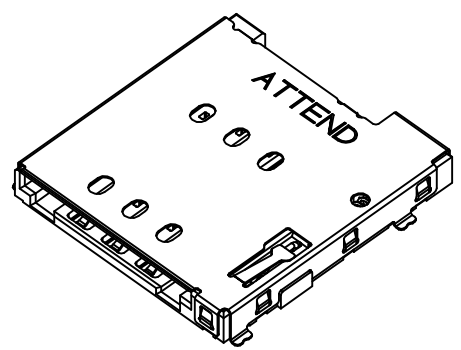

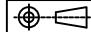


REV.	DESCRIPTION	DRAWN	DATE
1	INITIAL RELEASE	FROS	2020/07/31
2	ECR2100014	FROS	2021/06/29

DATE CODE: XXXX (YWWD)
 Y= YEAR(2020)
 WW= WEEK (01-52)
 D= DAY (1-7)



This part is a connector only, it should be used together with Nano SIM Tray P/N: 115U-T001

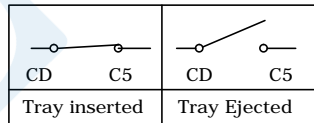
UNLESS OTHERWISE SPECIFIED TOLERANCE					
UNIT:	DECIMAL	LINEAR	ANGLES		
mm	X.	±0.50	±5°	www.attend.com.tw	
	X.X	±0.25	±3°		
	X.XX	±0.12	±1°		
DRAWN	Fros	2020/04/06	DRAWN NAME: Nano SIM Socket, 6 Pin, Tray-Push Push, G/F, Reel		
CHECKED	Tim	2020/04/06	PRODUCT NO. 115U-A101		
APPROVED	Ken	2020/04/06	FILE NAME 115U-A101_B_2		
 SCALE 2.5/1		SHEET 1/4	SIZE A4		

REV.	DESCRIPTION	DRAWN	DATE
	see sheet one		

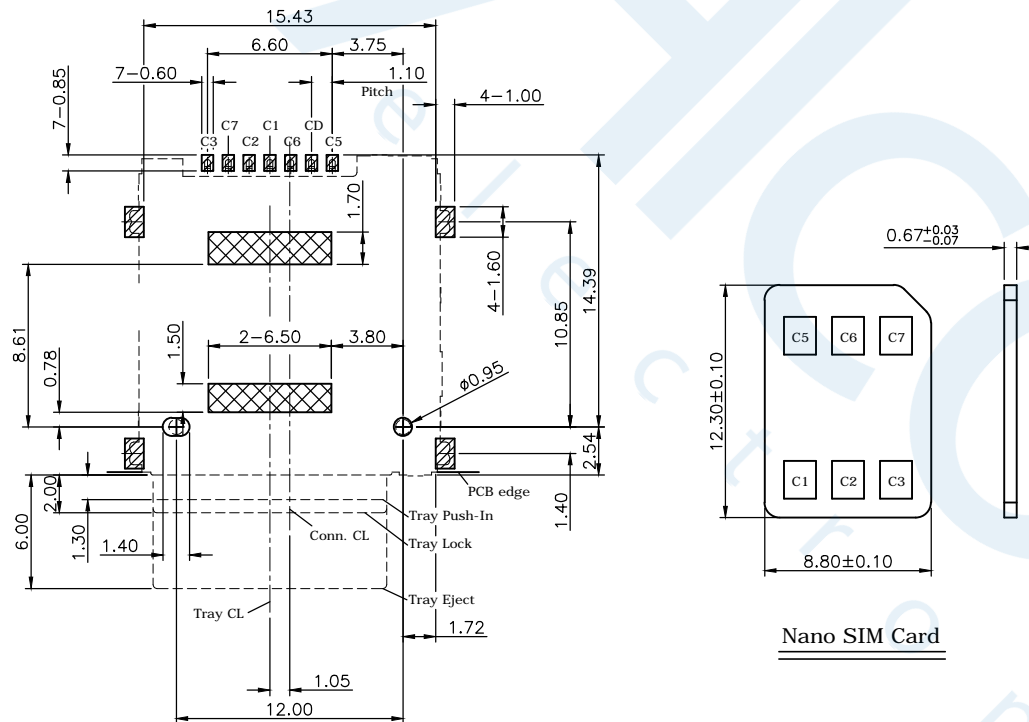
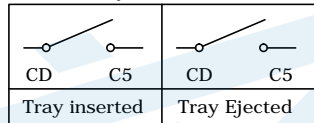
Pin out & Card detect switch status.

Pin NO.	Pin Name
C 1	VCC
C 2	RST
C 3	CLK
C 5	GND
C 6	VPP
C 7	I/O
CD	Card Detect Switch

Tray with card



Tray without card



Recommended PCB layout (top view)
General tolerance: ±0.05mm

SPECIFICATION:

- ELECTRICAL**
 - Current Rating: 0.5A per pin
 - Voltage Rating: 10V DC
 - Contact Resistance: Initial 50mΩ, after 100mΩ Max.
 - Insulation Resistance: 1000MΩ
 - Dielectric Withstanding Voltage: 500VAC
- MECHANICAL**
 - Durability: 5,000 cycles
 - Contact Normal Force: 0.3N Min. per pin
 - Tray Withdrawal Force: 2N Min.
- ENVIRONMENTAL**
 - Operating temperature range: -40°C~+85°C
 - Storage temperature range: -40°C~+85°C
- SOLDER ABILITY**
 - Recommended IR-Reflow Temperature: 260°C

This part is a connector only, it should be used together with Nano SIM Tray P/N: 115U-T001

*	115U-T001	Card Tray, Used for Nano SIM Card Socket Push-Push, Lock, PC+ABS, Black, Reel
---	-----------	---

6	CRANK	Stainless Steel
5	SPRING	SWP-B, Nickel plating
4	SLIDER	LCP, UL94V-0, Black
3	SHELL	Stainless Steel, Nickel plating
2	CONTACT	Phosphor Bronze, Gold plating over Nickel
1	HOUSING	LCP, UL94V-0, Black

NO.	PART NAME	DESCRIPTION		
UNLESS OTHERWISE SPECIFIED TOLERANCE				
UNIT:	DECIMAL	LINEAR	ANGLES	
	mm	X. ±0.50	±5°	
		X.X ±0.25	±3°	
		X.XX ±0.12	±1°	
DRAWN	Fros	2020/04/06	DRAWN NAME:	
CHECKED	Tim	2020/04/06	Nano SIM Socket, 6 Pin, Tray-Push Push, G/F, Reel	
APPROVED	Ken	2020/04/06	PRODUCT NO. 115U-A101	
SCALE	2.5/1	SHEET 2/4	SIZE A4	FILE NAME 115U-A101_B_2

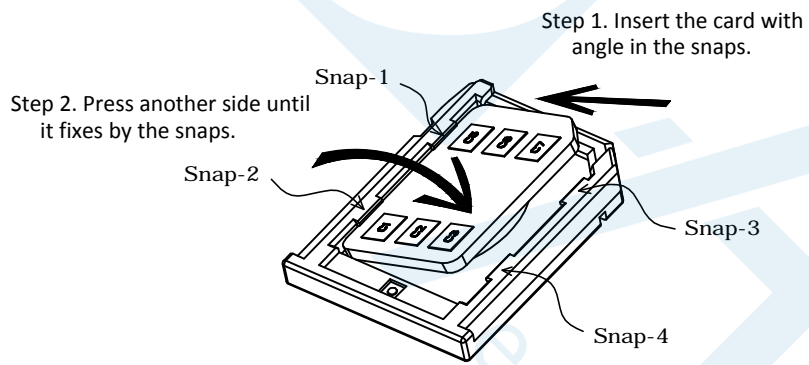


www.attend.com.tw

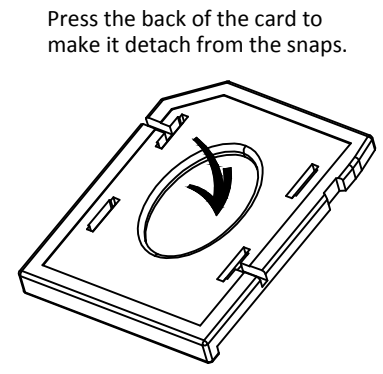
REV.	DESCRIPTION	DRAWN	DATE
	see sheet one		

Instruction Manual

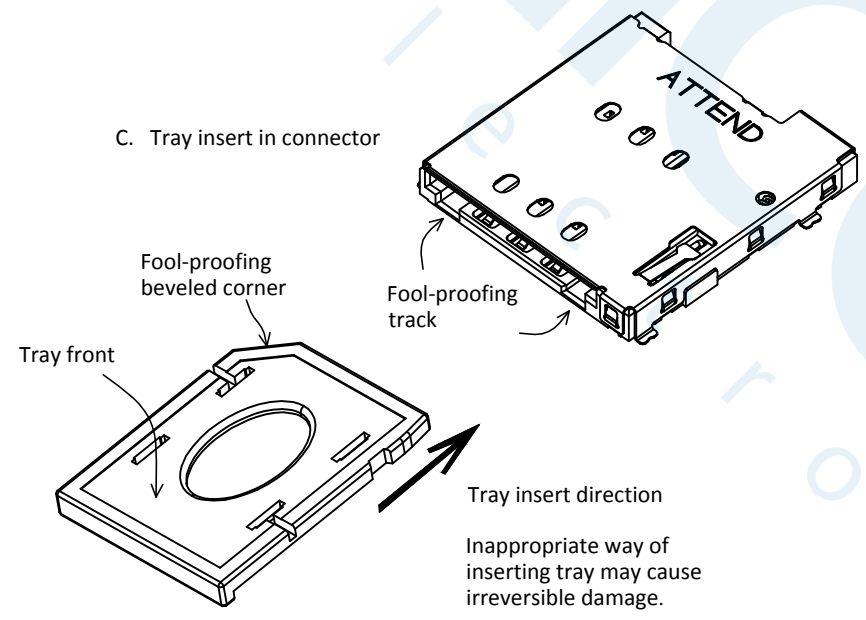
A. Set up Nano SIM card



B. Remove Nano SIM card



C. Tray insert in connector

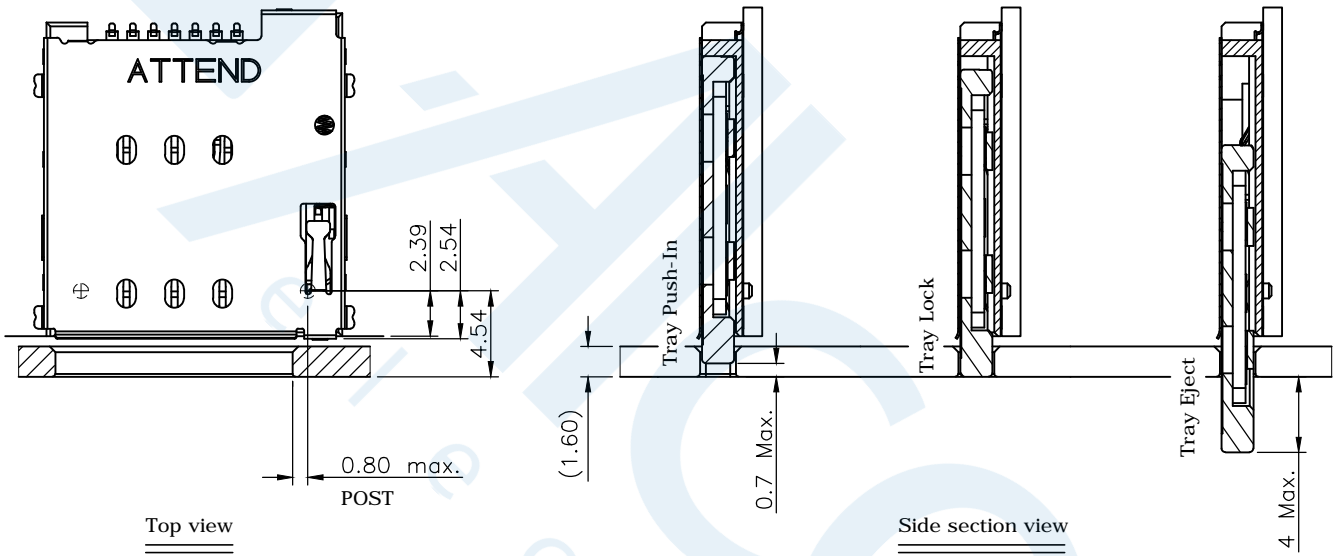


UNLESS OTHERWISE SPECIFIED TOLERANCE				ATTEND	
UNIT:	DECIMAL	LINEAR	ANGLES		
mm	X.	±0.50	±5°		
	X.X	±0.25	±3°		
	X.XX	±0.12	±1°		
DRAWN	Fros	2020/04/06	DRAWN NAME:		
CHECKED	Tim	2020/04/06	Nano SIM Socket, 6 Pin, Tray-Push Push, G/F, Reel		
APPROVED	Ken	2020/04/06	PRODUCT NO.	115U-A101	
	SCALE	SHEET	SIZE	FILE NAME	
	2.5/1	3/4	A4	115U-A101_B_2	

REV.	DESCRIPTION	DRAWN	DATE
	see sheet one		

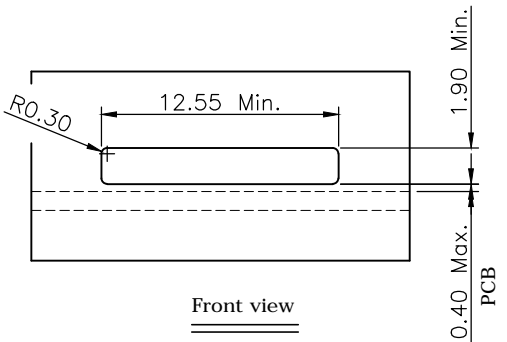
Instruction Manual

Recommended Panel Cut





Top view

Side section view



Front view

UNLESS OTHERWISE SPECIFIED TOLERANCE				 ATTEND www.attend.com.tw
UNIT:	DECIMAL	LINEAR	ANGLES	
mm	X.	±0.50	±5°	
	X.X	±0.25	±3°	
	X.XX	±0.12	±1°	
DRAWN	Fros	2020/04/06	DRAWN NAME:	
CHECKED	Tim	2020/04/06	Nano SIM Socket, 6 Pin, Tray-Push Push, G/F, Reel	
APPROVED	Ken	2020/04/06	PRODUCT NO. 115U-A101	
	SCALE 2.5/1	SHEET 4/4	SIZE A4	FILE NAME 115U-A101_B_2