

# Pallas-D

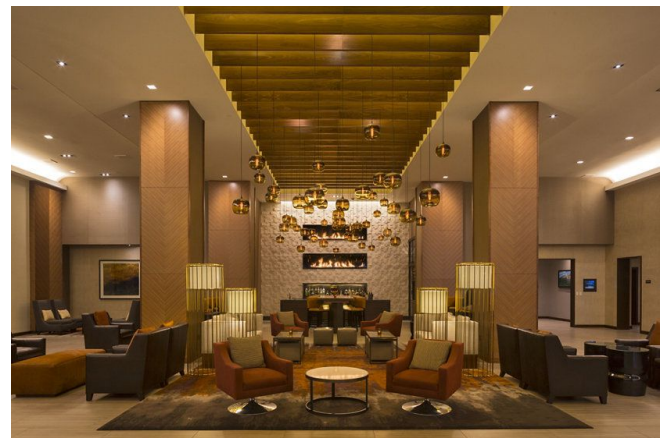
## Bridgelux Differentiation

- It's in our DNA is to solve customers' problems
- 15+ years of driving lighting market transformation
- Vertically integrated global supply chain
- Strategic focus on the simplification of human centric lighting systems



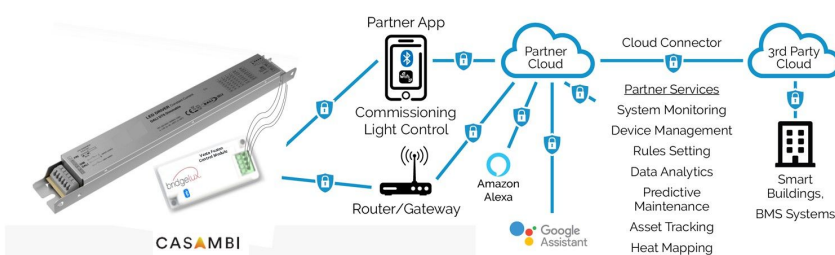
## What is Pallas-D?

- A family of specifier grade Constant Current LED drivers with deep and smooth dimming performance via DALI-2 standard
- Brick and linear form factor best fit for various lighting applications
- Various power options (12W to 75W) to cover different applications
- DIP-Switches configurable output currents aimed for maximized flexibility and ease of use
- Flicker free per IEEE P1789, EU2019/2020 (ErP)
- Built-in over-voltage, over-temperature and short circuit protection



Pallas-D Drivers Parameters	BXDR-PS-12BS-E105D-01-A	BXDR-PS-25BS-E107D-01-A	BXDR-PS-45BS-E110D-01-A	BXDR-PS-45BS-E116D-01-A	BXDR-PS-75BS-E116D-01-A	BXDR-PS-45LS-E110D-01-A	BXDR-MS-45LT-E110D-01-A	BXDR-MS-75LT-E116D-01-A
Power	12W	25W	45W	45W	75W	45W	45W	75W
Inputs (AC/DC)	220-240Vac 176-370Vdc	220-240Vac 176-370Vdc	220-240Vac 176-370Vdc	220-240Vac 176-370Vdc	220-240Vac 176-370Vdc	220-240Vac 176-370Vdc	220-240Vac 176-370Vdc	220-240Vac 176-370Vdc
Output Current (mA) (7 / 8 steps)	180/230/ 260/300/ 350/400/ 450/500	260/350/ 400/450/ 500/550/ 600/700	350/500/ 600/700/ 800/900/ 1050	1050/1150/ 1200/1300/ 1400/1500/ 1500/1600	1050/1150/ 1200/1300/ 1400/1500/ 1500/1600	350/500/ 600/700/ 800/900/ 1050	350/500/ 600/700/ 800/900/ 1050	1050/1150/ 1200/1300/ 1400/1500/ 1500/1600
Output Voltage	18 - 54V	20 - 60V	25 - 70V	14 - 43V	25 - 71V	20-50V	25 - 70V	25 - 71V
Efficiency (@ Full Load)	>79%	>86%	>87%	>87%	>89%	>87%	>87%	>89%
Dimming Control	DALI-2	DALI-2	DALI-2	DALI-2	DALI-2	DALI-2	DALI-2	DALI-2
Ambient Temperature	-20°C to +50°C	-20°C to +50°C	-20°C to +50°C	-20°C to +50°C	-20°C to +40°C	-20°C to +50°C	-20°C to +50°C	-20°C to +50°C
Connection	Terminal Blocks	Terminal Blocks	Terminal Blocks	Terminal Blocks	Terminal Blocks	Terminal Blocks	Terminal Blocks	Terminal Blocks
Dimensions (mm)	119 x 52 x 22.5 (Strain Relief)	119 x 52 x 22.5 (Strain Relief)	135 x 72 x 24 (Strain Relief)	135 x 72 x 24 (Strain Relief)	159 x 79 x 30 (Strain Relief)	320 x 35 x 23 (Strain Relief)	280 x 31.5 x 22	360 x 31 x 21.5

## Pallas-D Wireless Platform (Upcoming)



## CASAMBI BLE Control



**BXCS-12C-N2A-01-A**  
75 x 32 x 20mm (L x W x H)



© 2022 Bridgelux, Inc. All rights reserved. Product specifications are subject to change without notice. Bridgelux, the Bridgelux stylized logo design and Vesta are registered trademarks of Bridgelux, Inc. All other trademarks are the property of their respective owners. The information contained in this sell sheet is not a substitute for the information provided in the actual product data sheet.